

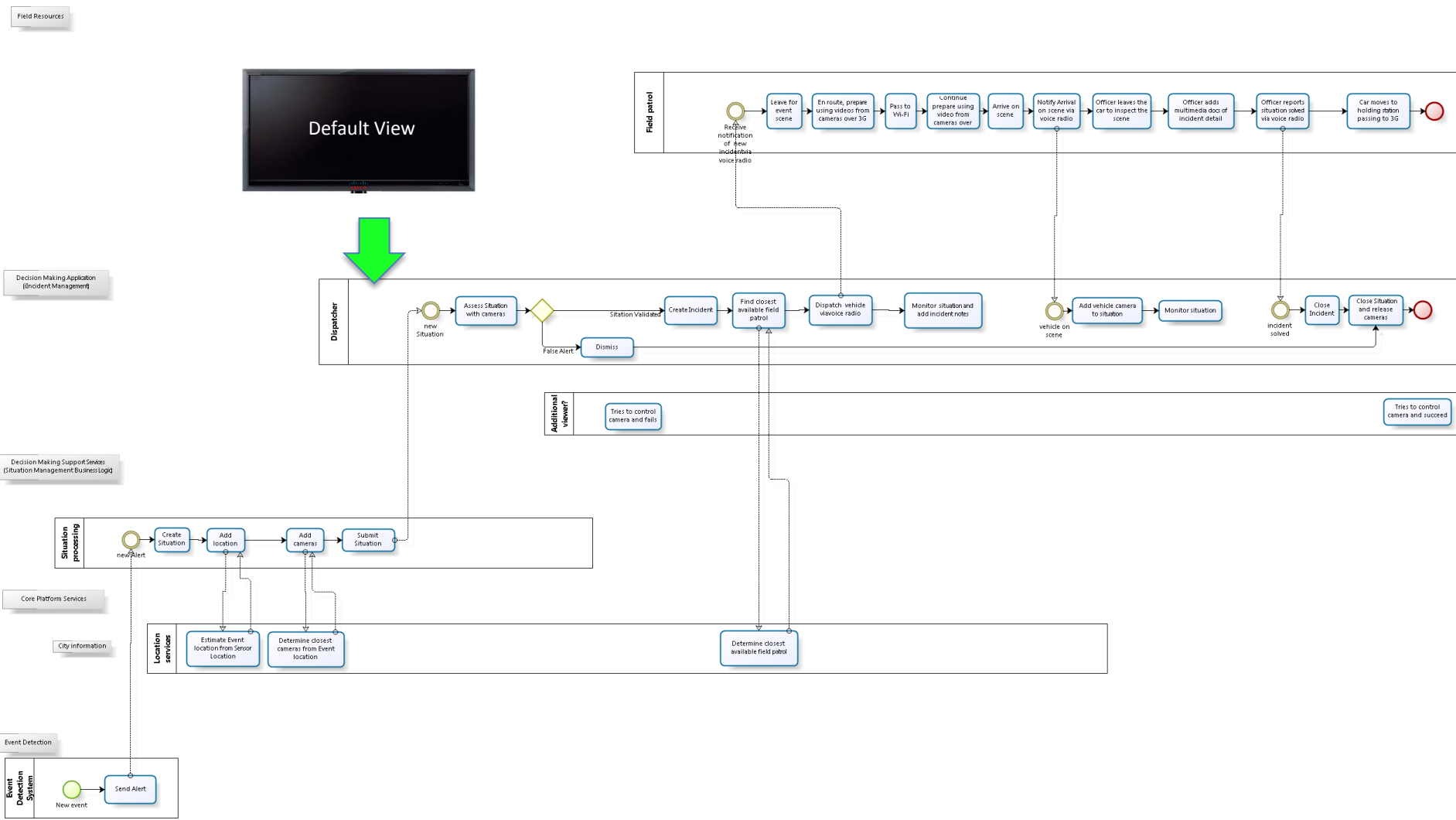


# Barcelona Use Case Storyboard

## Outstanding Questions

- What relevant information can we stream to control center
- Final demo location

# Start of Use Case – before a new situation has been created



# Default View - Example

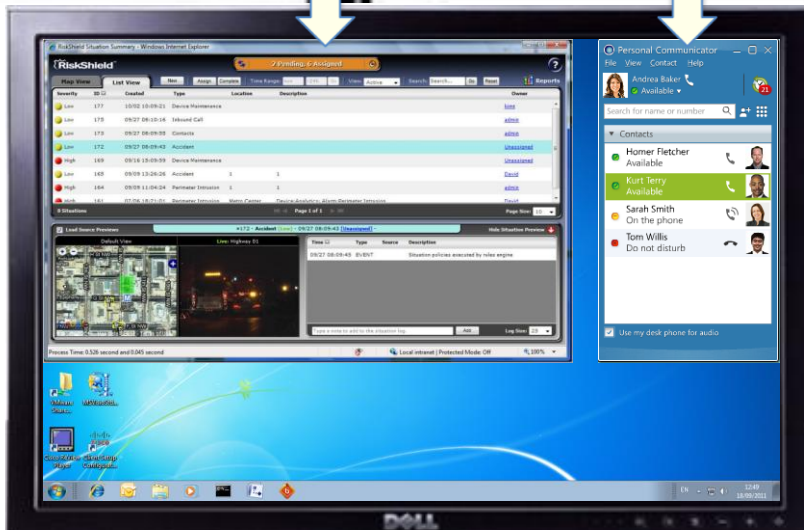
Video wall can show live camera views

o maps.

Riskshield window with list of incidents is permanently on left screen

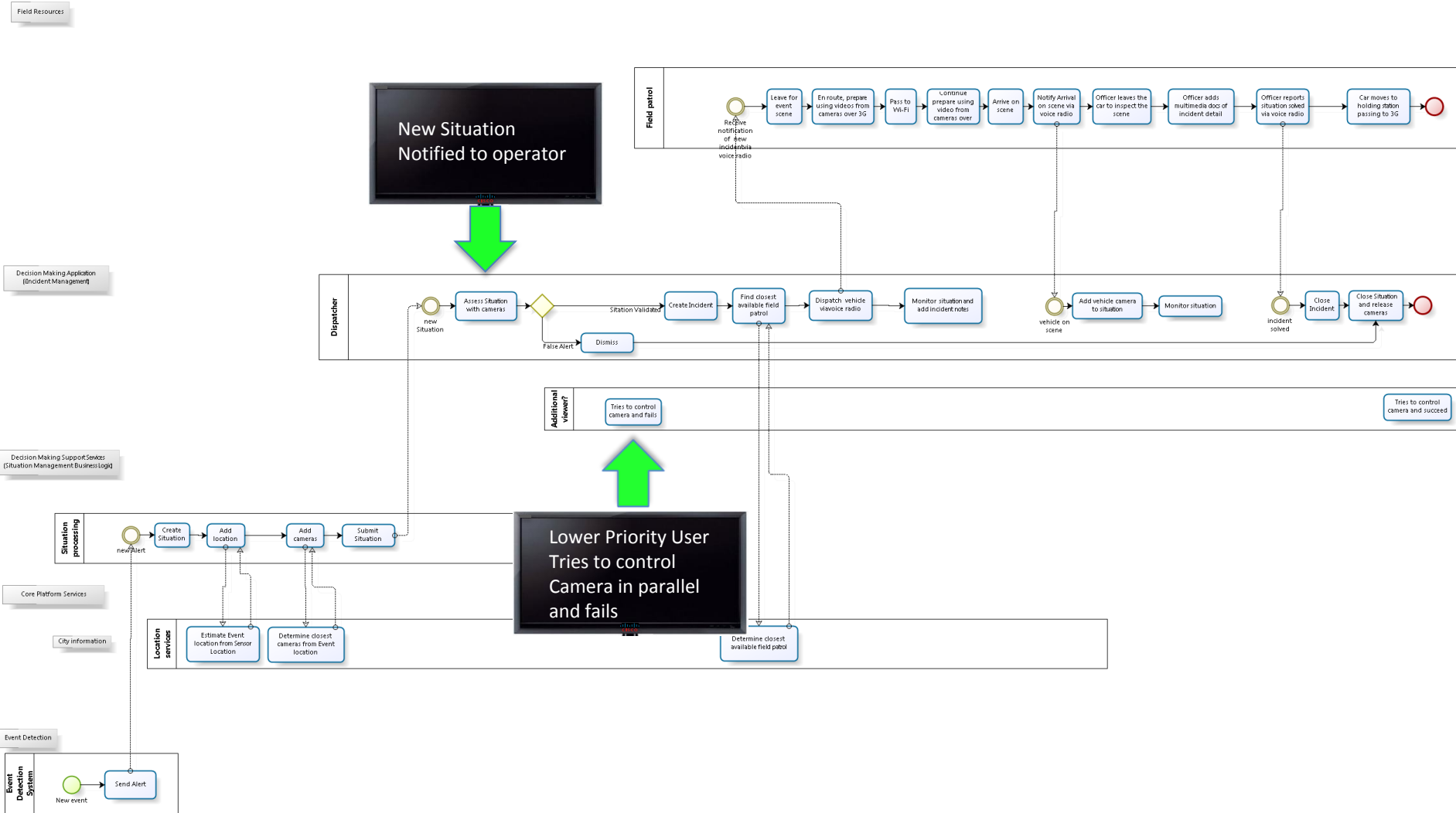
Cisco Unified Personal Communicator

This screen can be used for anything. This shows full map with plotted incidents



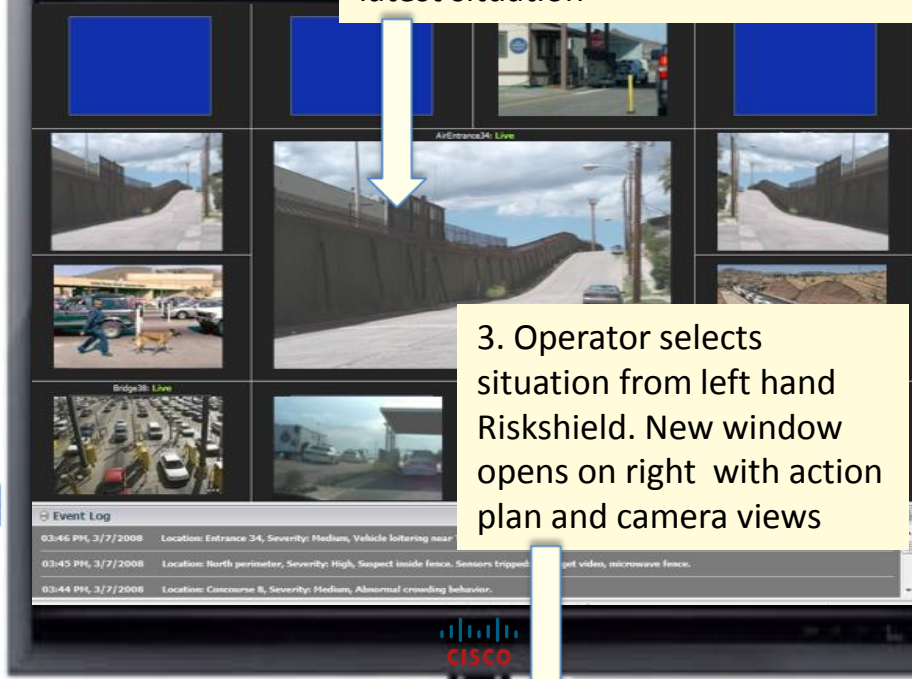
Note: Cameras on this view should show street scene around sensors and maybe police car?

# New situation created based on sensor event



# New Situation is auto-created and assessed by the Operator

4. Video Wall camera views updated automatically with view of latest situation



# Lower Priority user tries to control the street camera but fails

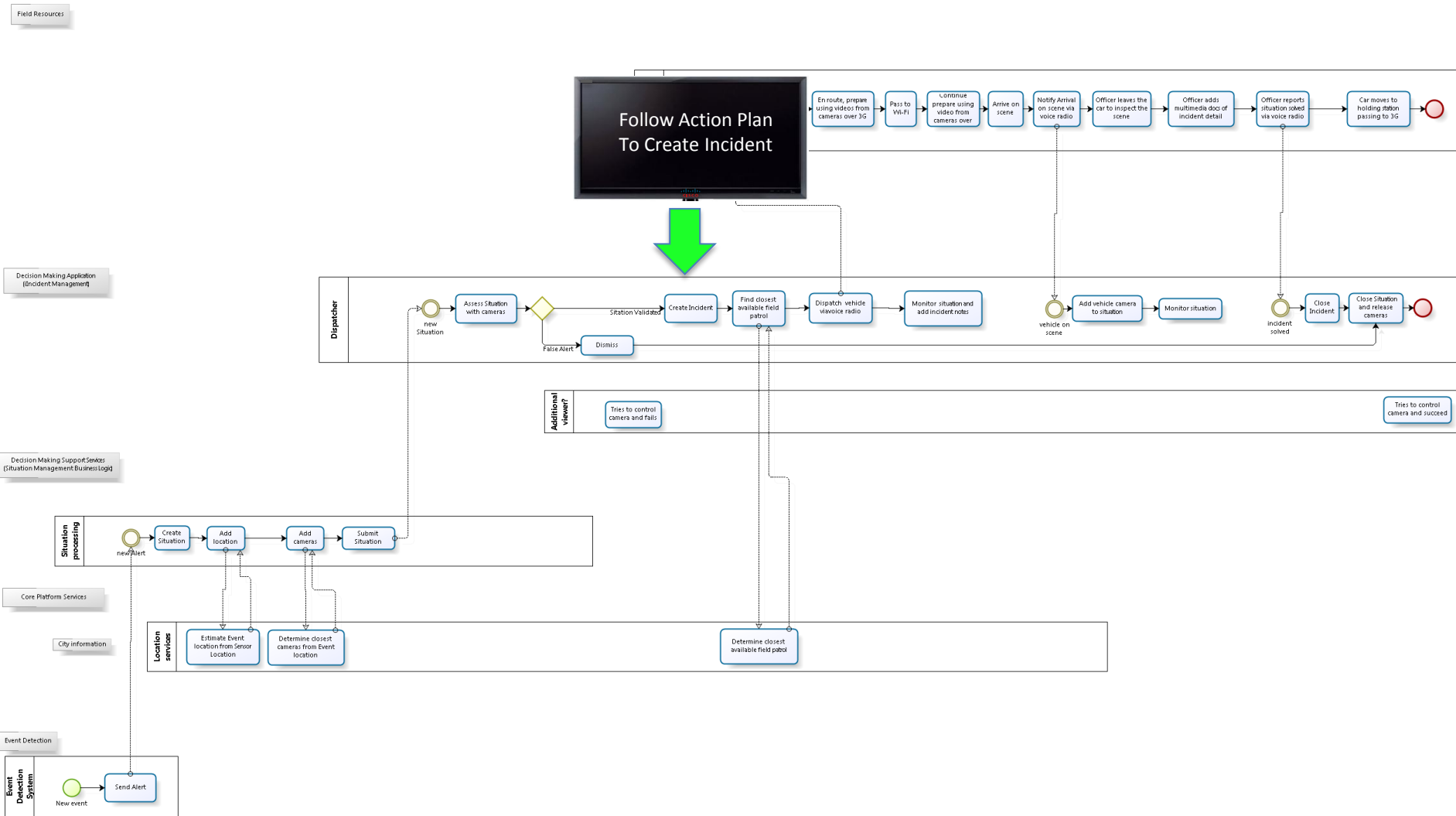
The screenshot displays the Cisco Situation Manager web interface. At the top, a yellow notification bar reads "Launch Cisco Situation Manager - Response 0 Pending, 1 Assigned". The interface is divided into several sections:

- Directory:** A sidebar on the left lists "streetcams" with sub-items: "p\_cam-axis214-1\_mpeg4", "p\_cam-axis214-2\_0", and "p\_cam-axis214-3".
- Control Panel:** A central control panel for "p\_cam-axis214-2\_0 (admin): Live" features buttons for IRIS, FOCUS, ZOOM, PAN SPEED, RELEASE, and RECORDED. A yellow arrow points to the ZOOM button.
- Video Feeds:** The main area contains two video windows. The top-right window, titled "Live: p\_cam-axis214-1\_mpeg4", shows a live camera feed of an office interior. The bottom-left window, titled "Live: p\_cam-axis214-2\_0", shows a corrupted or glitched video feed with a grey, noisy pattern.
- Event Log:** A "Cisco Event Log" section at the bottom right includes a "Show Event Log" button.

A yellow text box on the left side of the interface contains the following text:

Low priority operator tries to use street camera when under the control of the command centre. Receives message to say it is not possible

# Handle new situation and follow Action Plan

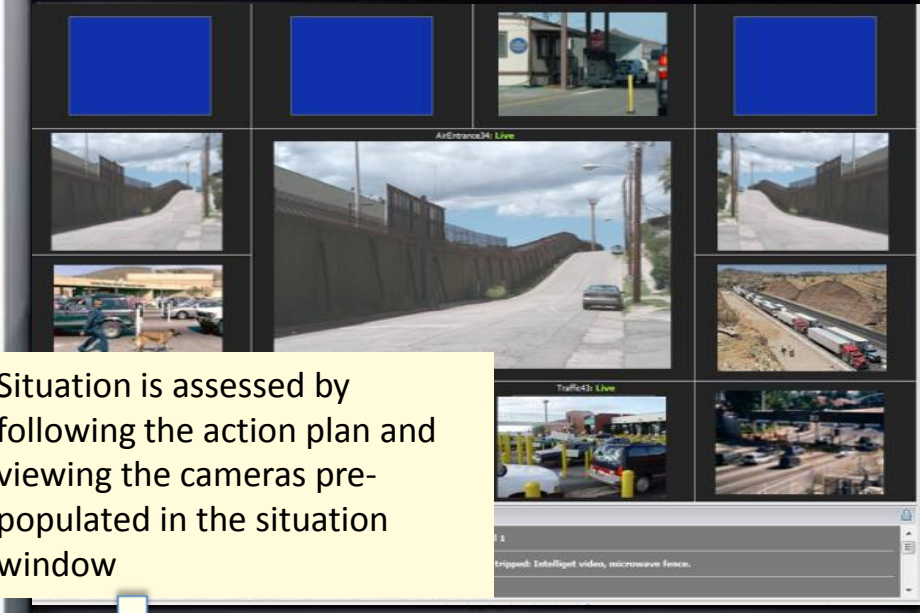




# New Situation is auto-created and assessed by the Operator

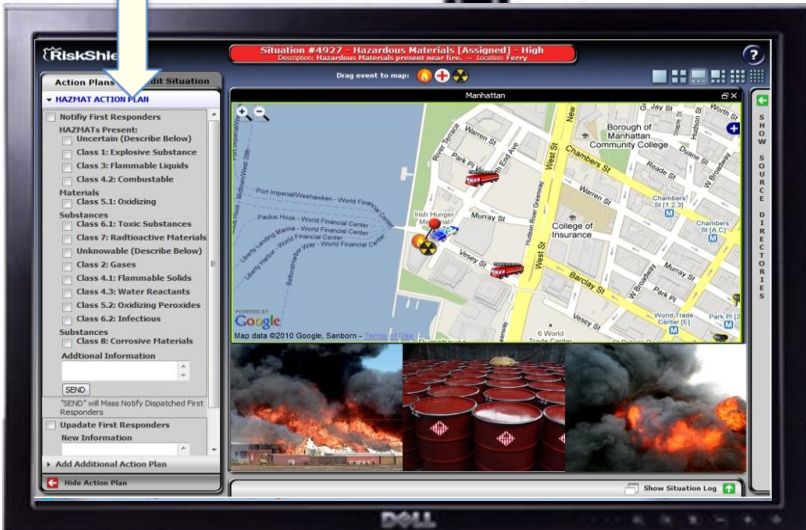
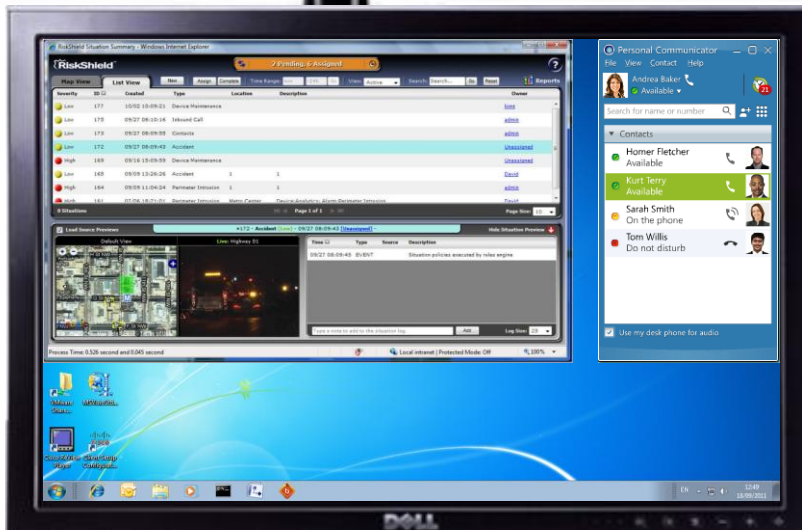


CISCO

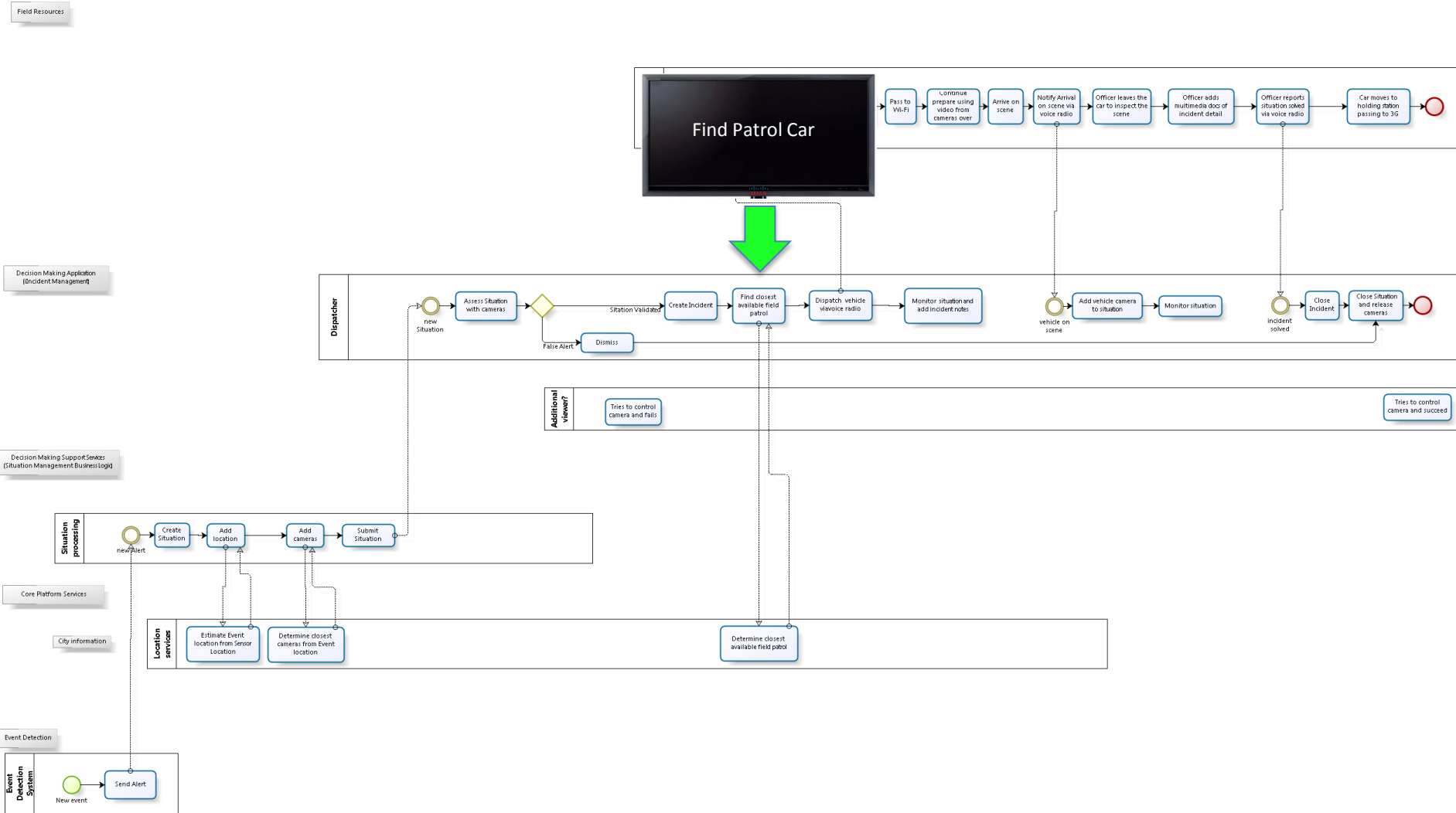


Situation is assessed by following the action plan and viewing the cameras pre-populated in the situation window

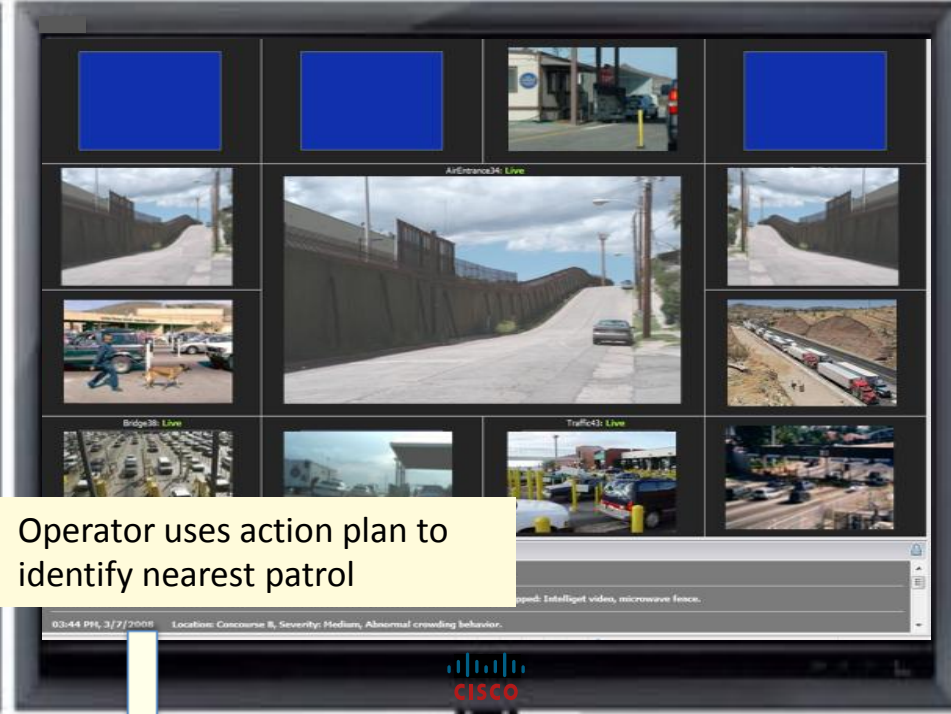
CISCO



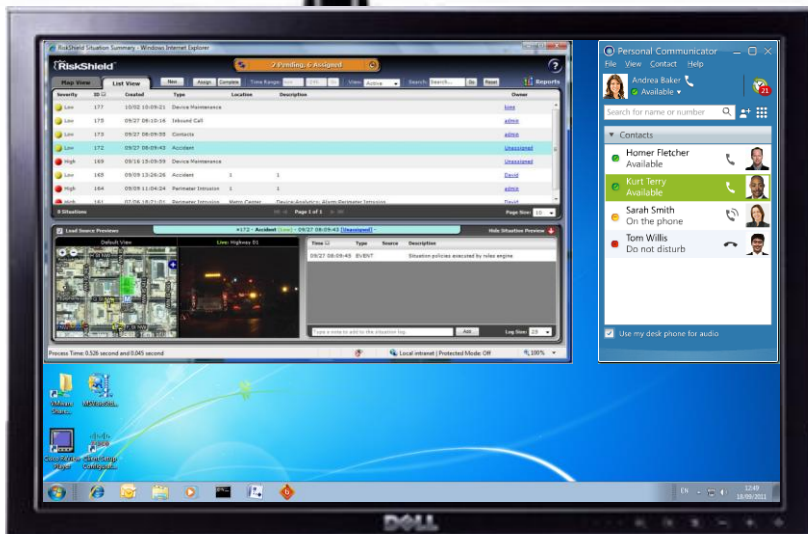
# Identify nearest Patrol Car



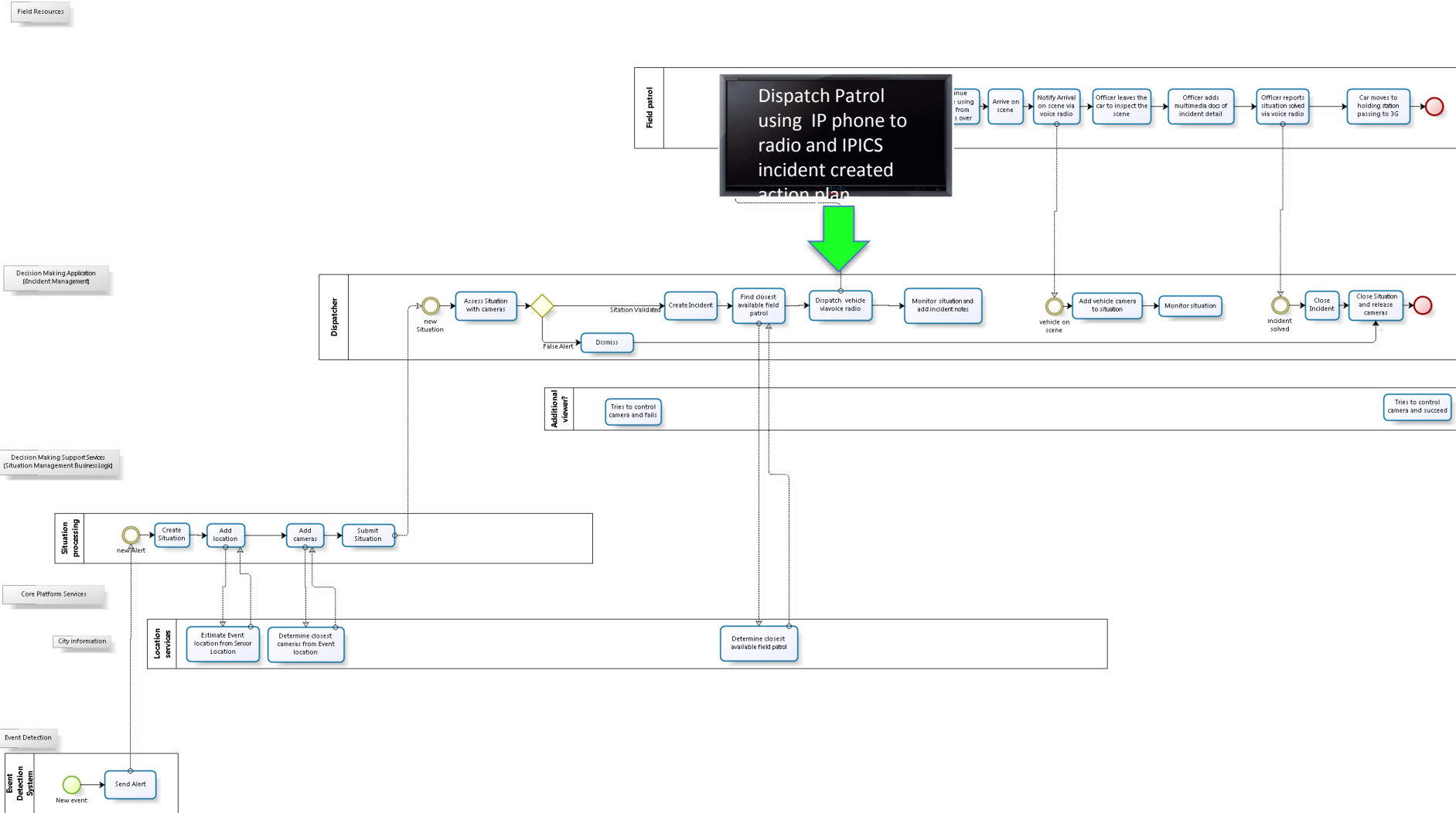
# Action plan is followed to handle the situation



Operator uses action plan to identify nearest patrol



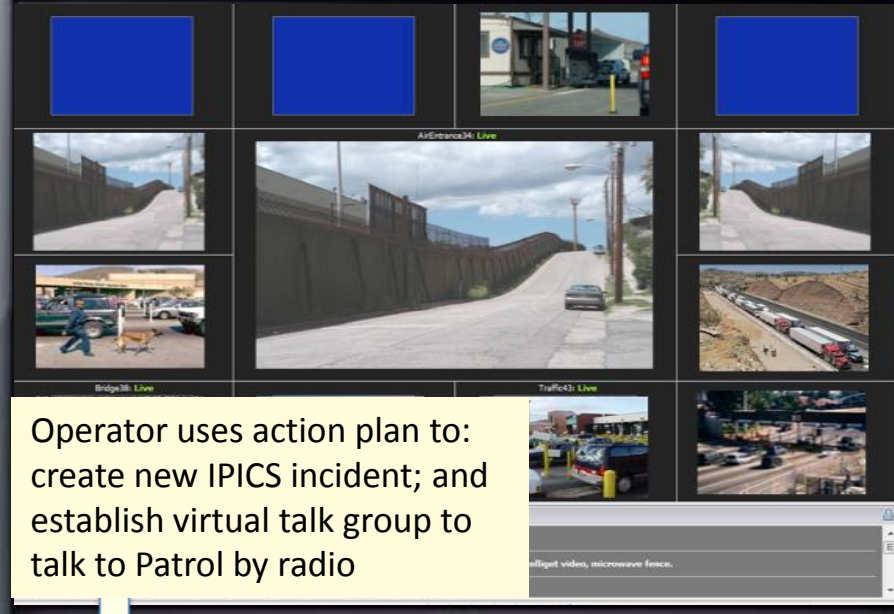
# Situation is dispatched to Patrol Car as IPICS incident and Radio request via IP phone



# Action plan is followed to create IPICS incident and talk to patrol car by IP phone/Radio

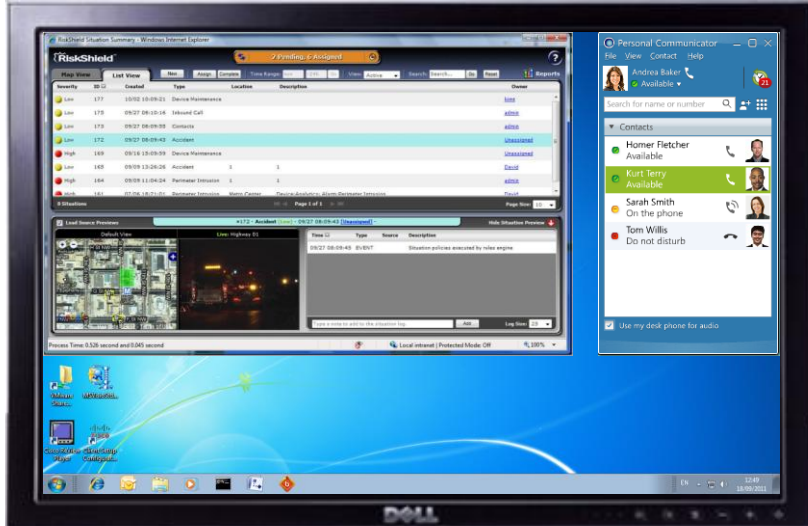


CISCO



Operator uses action plan to:  
create new IPICS incident;  
and establish virtual talk group  
to talk to Patrol by radio

CISCO



# Incident passed to Patrol Car

Patrol Car receives Notification

Field Resources

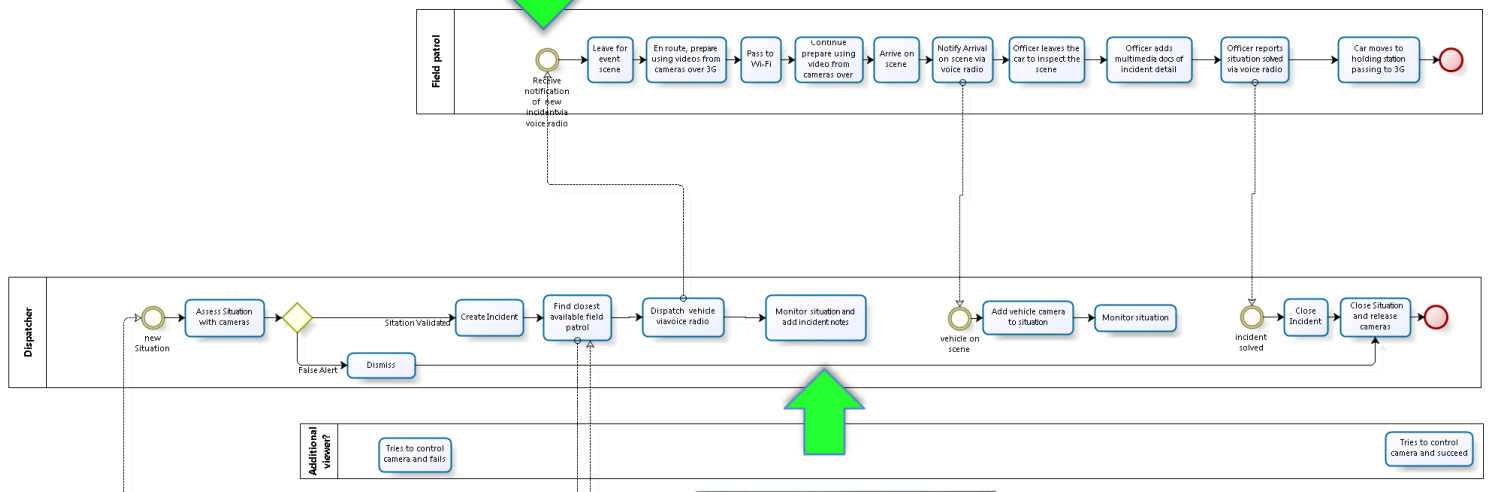
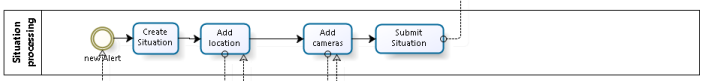
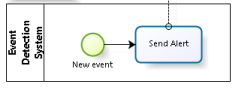
Decision Making Application (Incident Management)

Decision-Making Support Services (Situation Management Business Logic)

Core Platform Services

City information

Event Detection



Command Centre Monitors incident

# Patrol Car receives instruction by Radio and incident detail via IPICS

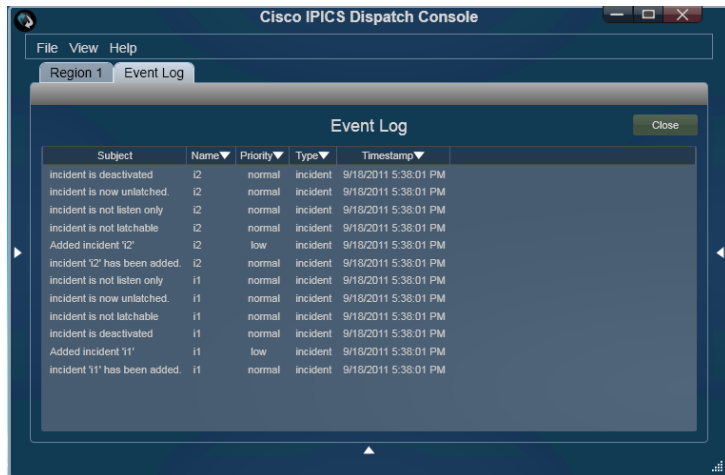


Command Centre operator uses IP Phone to talk with patrol car using radio



Patrol Car can see incident details on IPICS clients on Mobile PC and iPhone

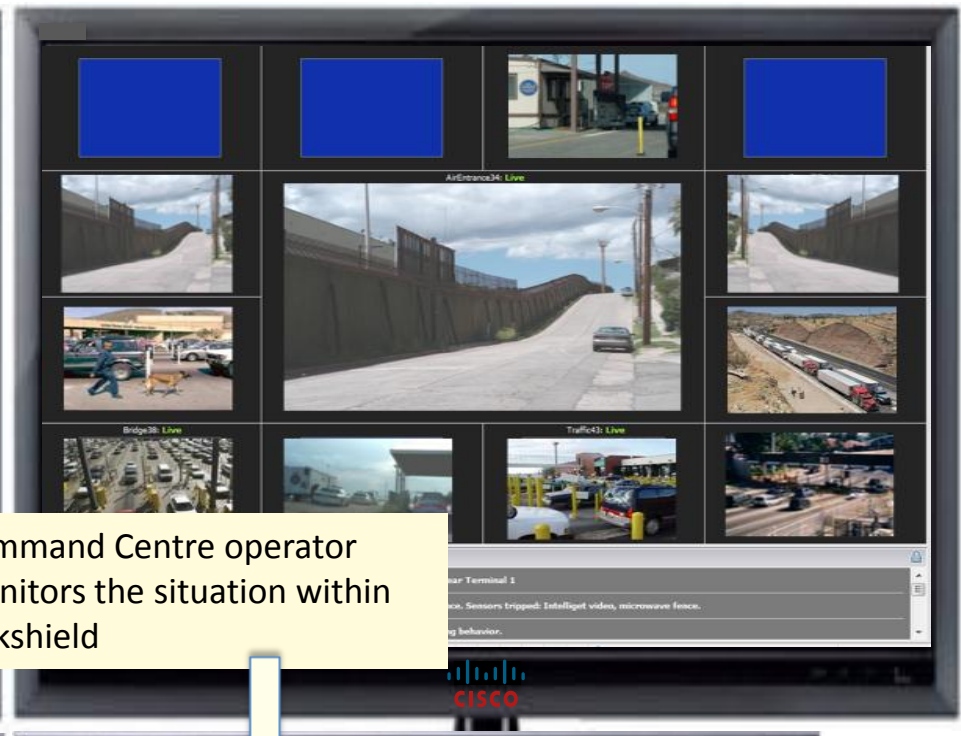
Mobile PC



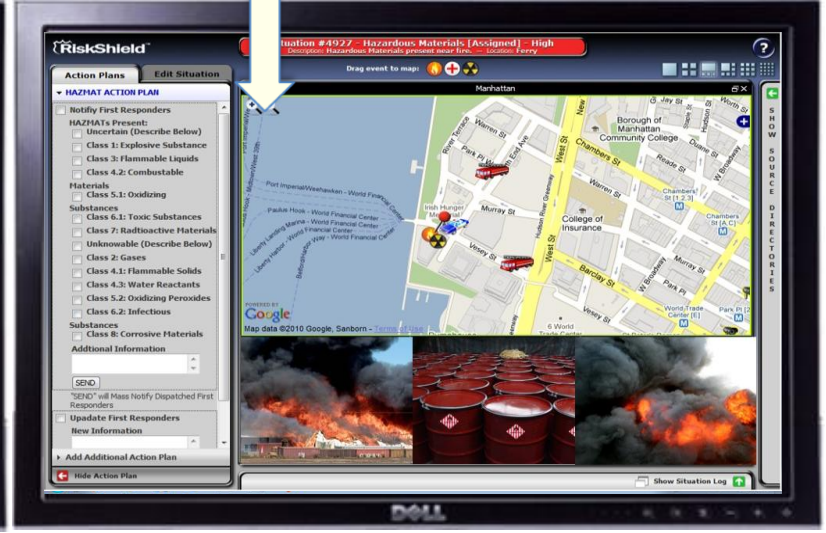
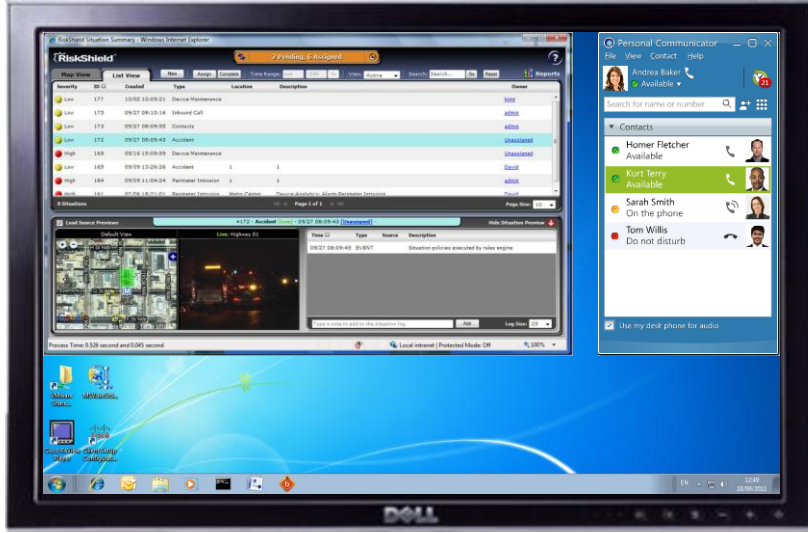
Iphone



# Command Centre monitors the situation



Command Centre operator monitors the situation within Riskshield





Patrol Car monitors street camera on route. Command Centre views Patrol Car camera on arrival

Field Resources

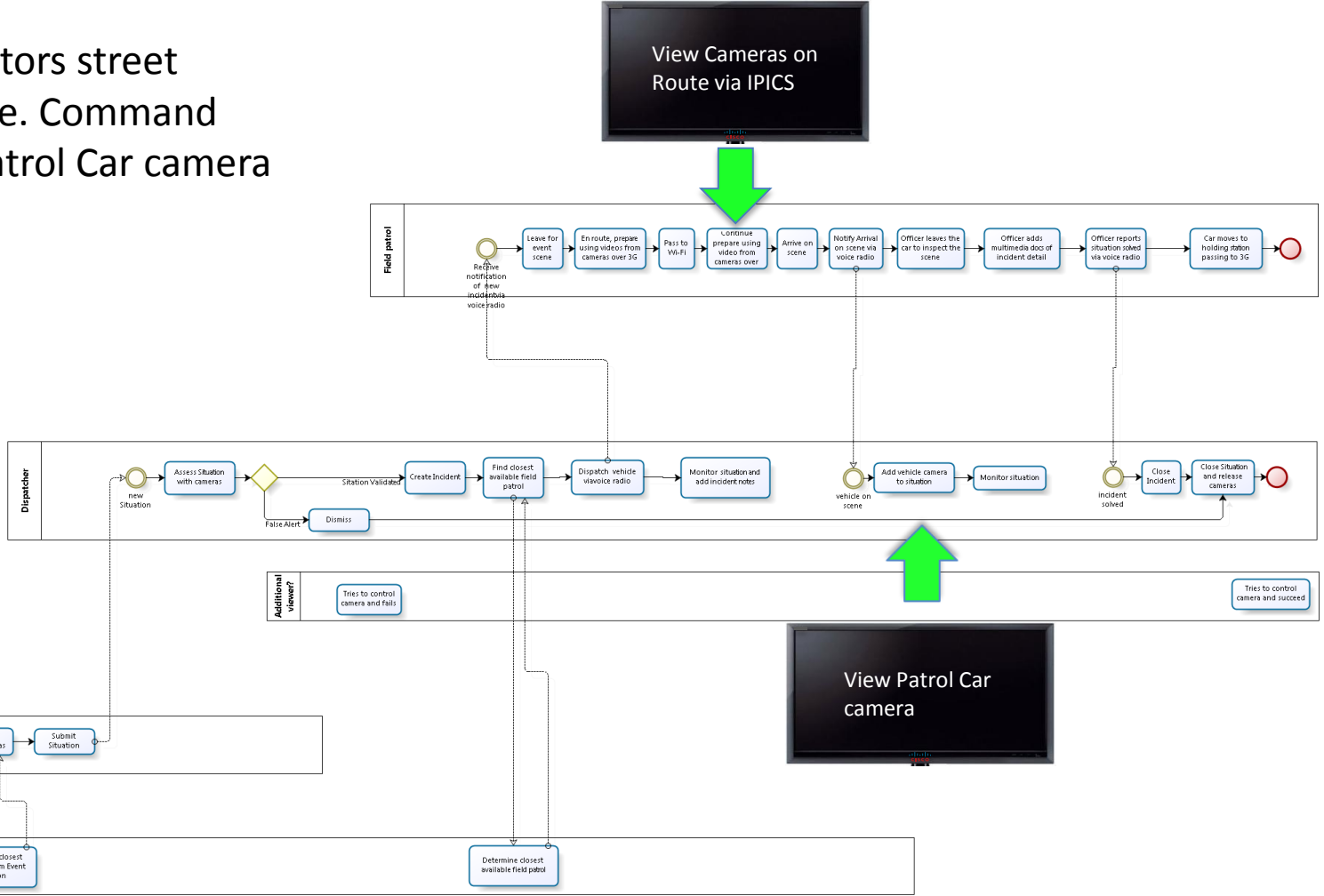
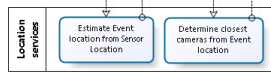
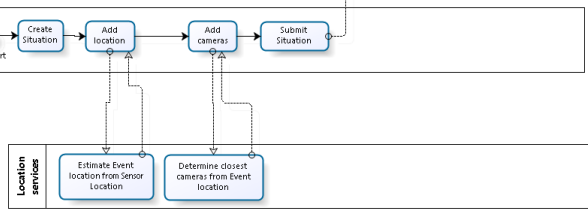
Decision Making Application (Incident Management)

Decision Making Support Services (Situation Management Business Logic)

Core Platform Services

City Information

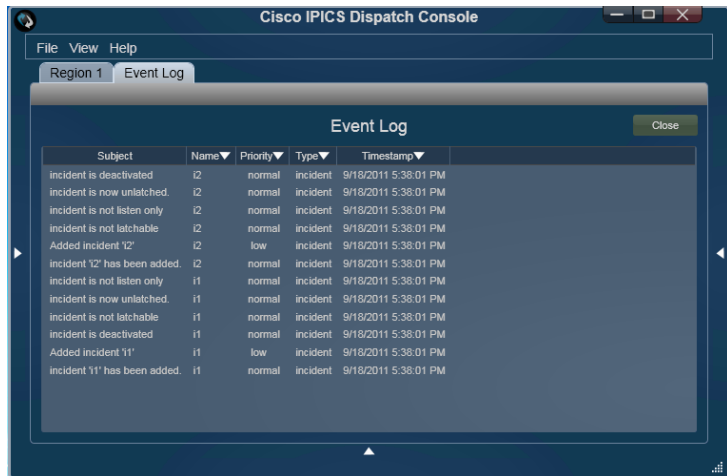
Event Detection



# Patrol Car views street camera on their way to the incident

Patrol Car can view the street camera whilst on route  
(subject to 3G/Wifi bandwidth)

Mobile PC



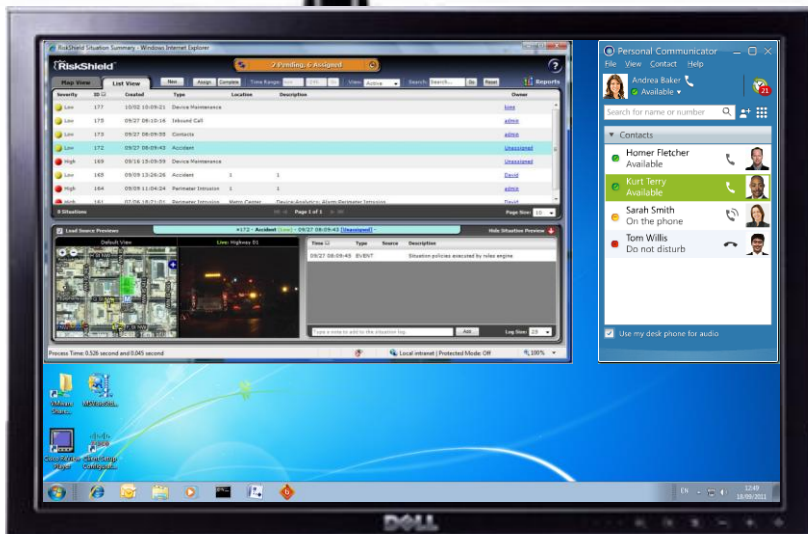
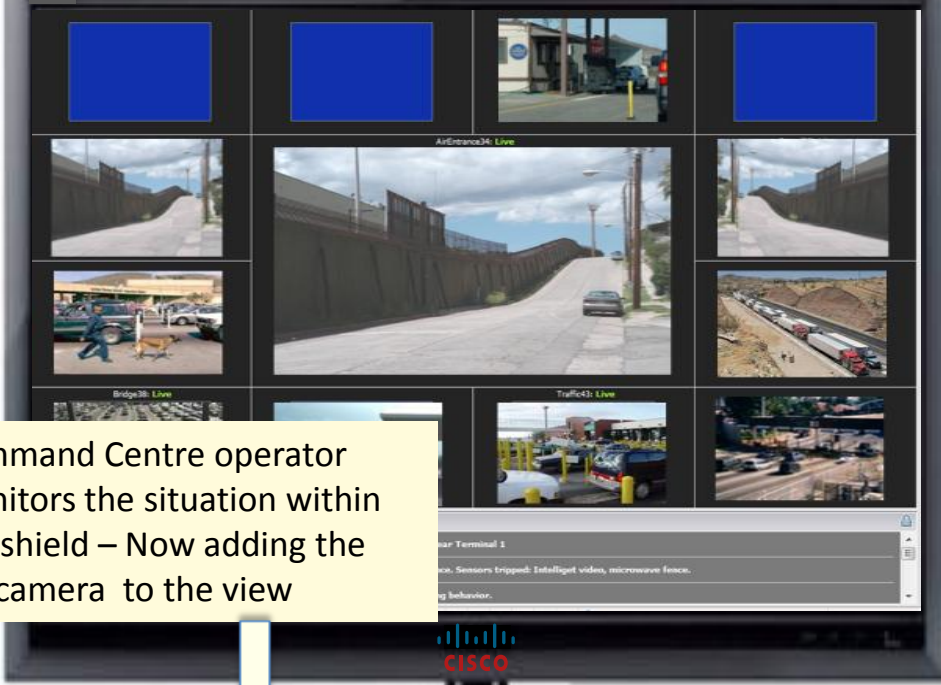
Iphone



# Command Centre monitors the situation



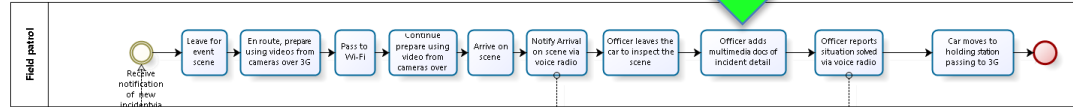
Command Centre operator monitors the situation within Riskshield – Now adding the car camera to the view



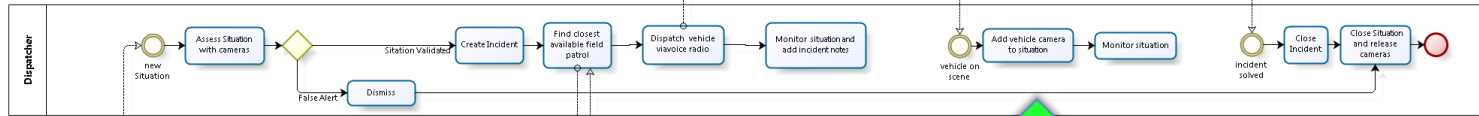
# Capture multi-media on iPhone and attach to the incident



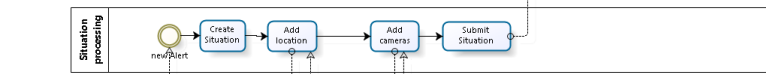
Field Resources



Decision Making Application (Incident Management)

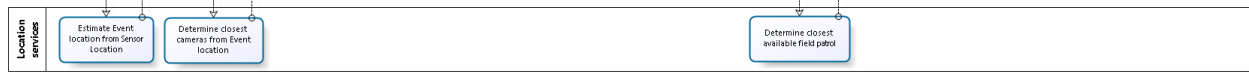


Decision Making Support Services (Situation Management Business Logic)



Core Platform Services

City information



Event Detection



# Police Officer takes picture or video and attaches to the incident

On arrival the Police Officer takes a picture or video of the street scene using iPhone and attaches it to the IPICS incident

## iPhone



# Command Centre monitors the situation

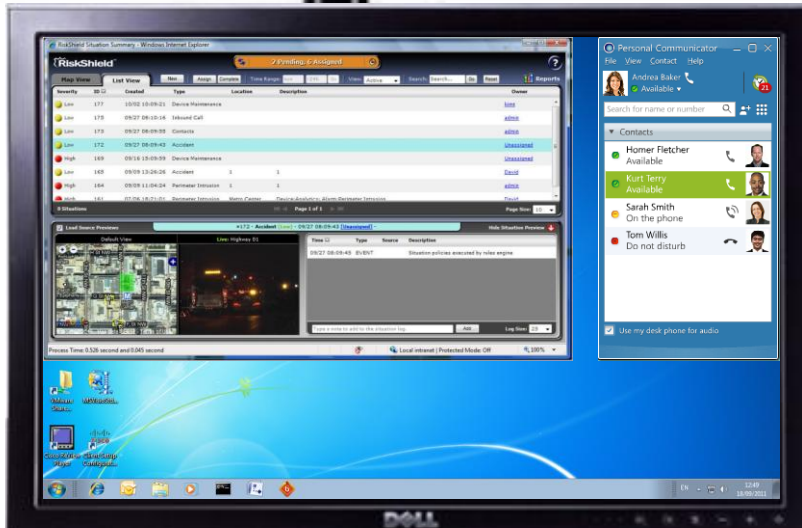


CISCO



Command Centre operator can view the iPhone video clip within the situation

CISCO



# Police Officer reports closure of the incident, Command Centre closes the situation, lower priority user can control the camera

Field Resources

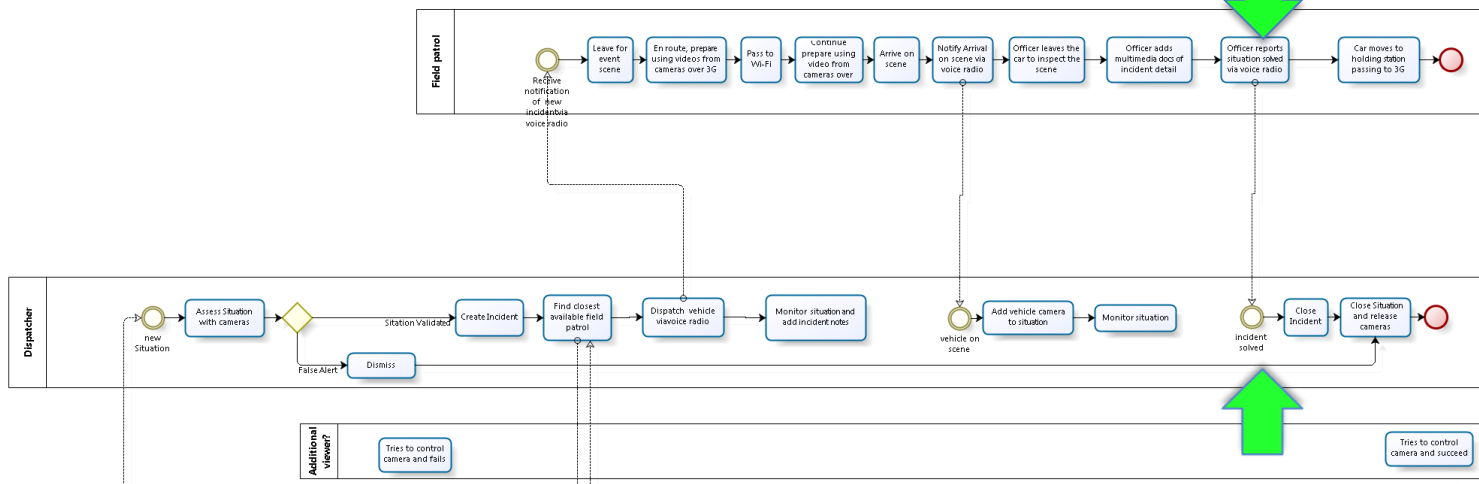
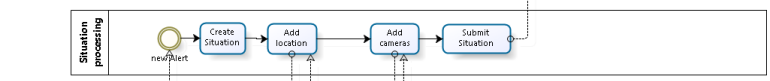
Decision Making Application (Incident Management)

Decision Making Support Services (Situation Management Business Logic)

Core Platform Services

City information

Event Detection



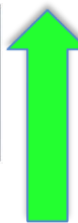
Patrol Car initiates call to Command Centre using Radio



Receive close instruct From Patrol Car. Close Situation/Incident



Access and control Street Camera



# Police Officer reports end of incident to Control Centre via IPICS

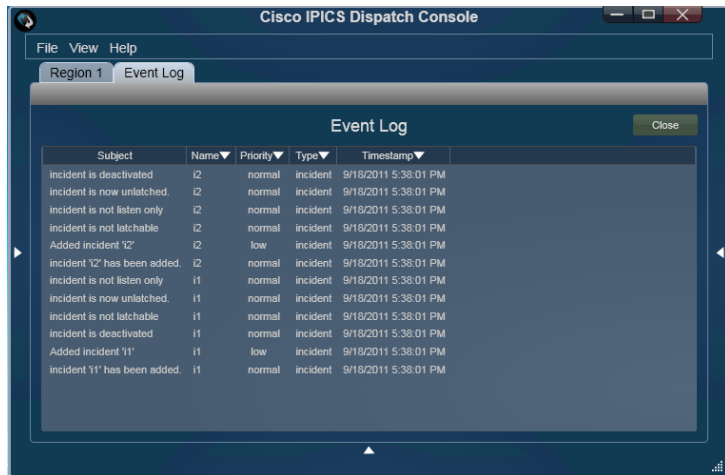


Police Officer report closure to Command Centre



Police Officer closes incident on IPICS. Notes are transferred to Riskshield situation record

Mobile PC

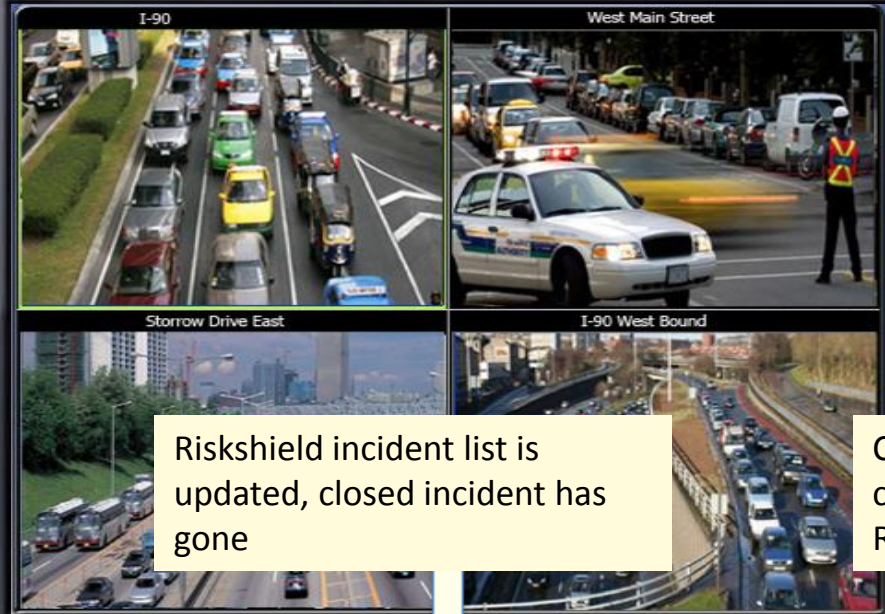


Iphone

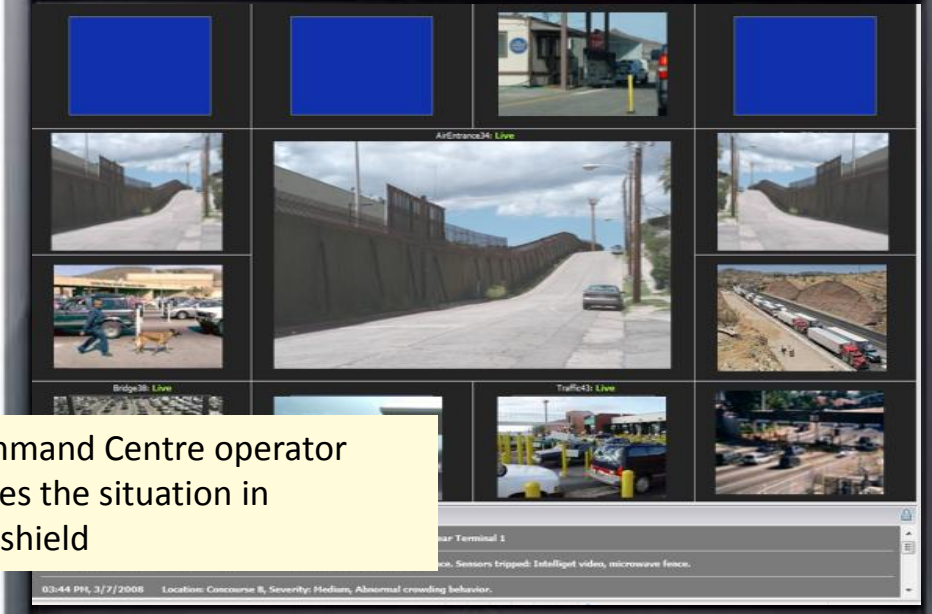




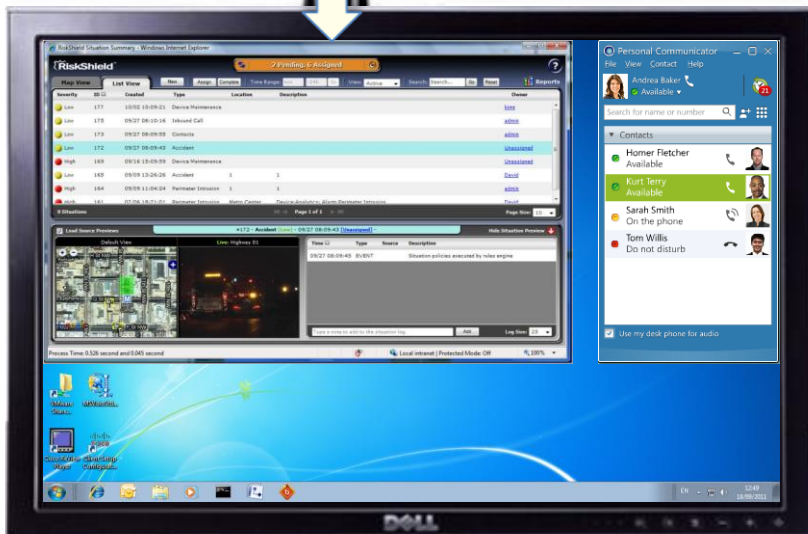
# Command Centre closes the situation



Riskshield incident list is updated, closed incident has gone



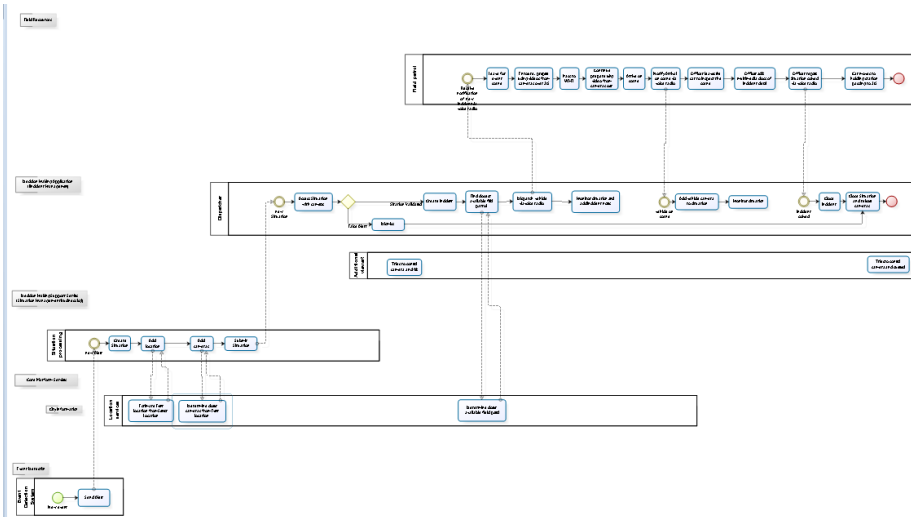
Command Centre operator closes the situation in Riskshield



# Lower Priority user is now able to control the street camera

The screenshot displays the Cisco Situation Manager web interface. At the top, a yellow notification bar reads "Launch Cisco Situation Manager - Response 0 Pending, 1 Assigned". The left sidebar contains a "Directory" with categories like "streetcams", "map views", and "carcams". Below it is a "Control Panel" for the selected camera, "p\_cam-axis214-2\_0 (admin): Live". This panel includes controls for IRIS, FOCUS, ZOOM, and PAN SPEED, along with "RELEASE" and "RECORDED" buttons. At the bottom of the sidebar are "PRESETS" numbered 1 through 6. The main content area is a 2x2 grid of video feeds. The top-right feed shows a live camera view of an office interior. The bottom-left feed shows a live view of a data center server room. The other two feeds are currently blue, indicating they are not active or are in a "Default View" state. A "Cisco Event Log" section is visible at the bottom right of the interface.

# **BACK-UP CHARTS**



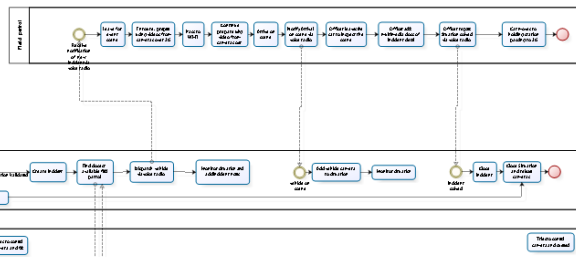
Releaseweiter

Software-Entwicklungsprozess

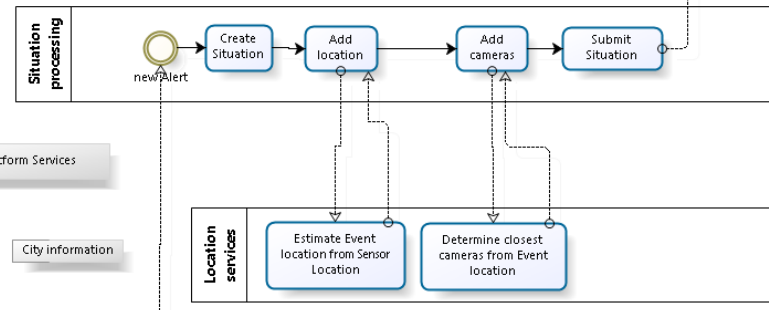
Software-Entwicklungsprozess

Software-Entwicklungsprozess

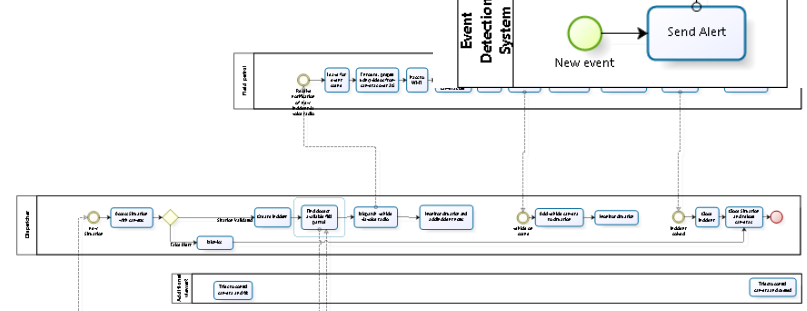
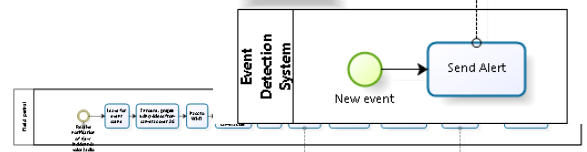
Releaseweiter



### Decision Making Support Services (Situation Management Business Logic)



### Event Detection



Field worker

Tractor with applicator  
operator

Tractor with support car  
operator

Core Platform Service

City Service

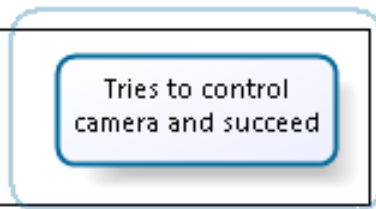
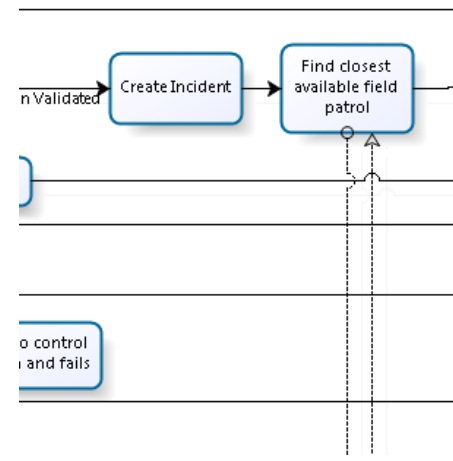
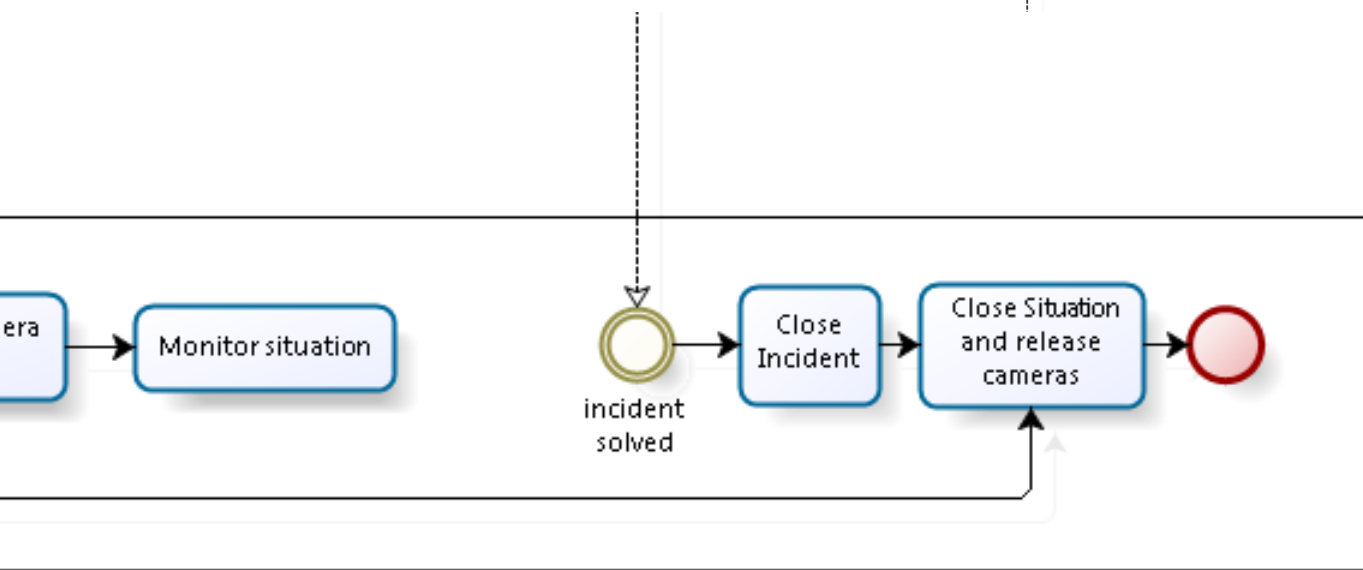
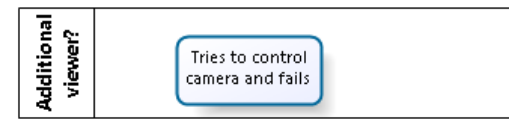
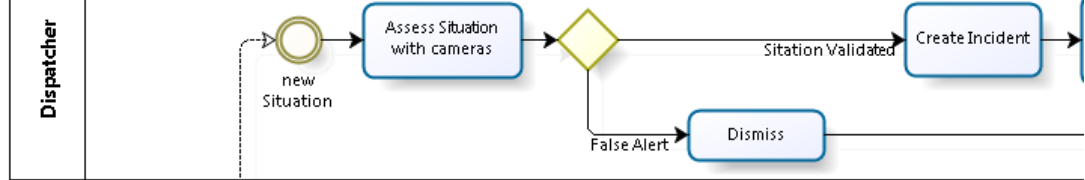
Field worker

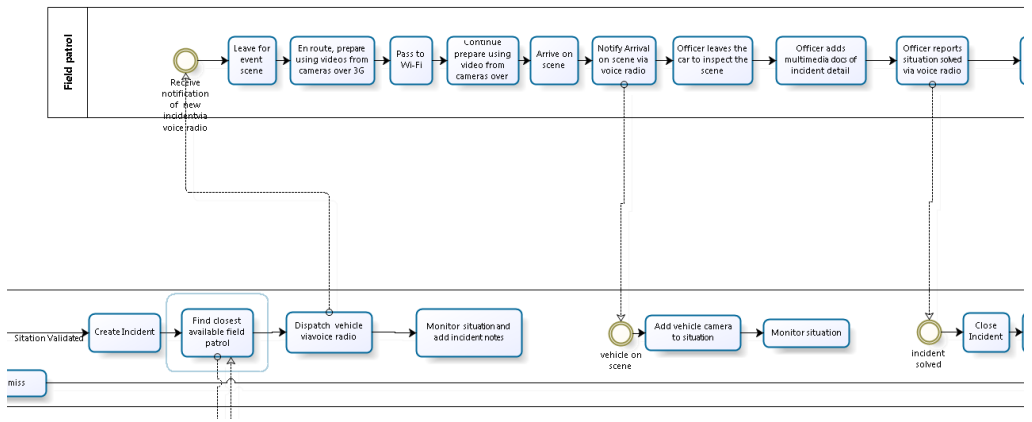
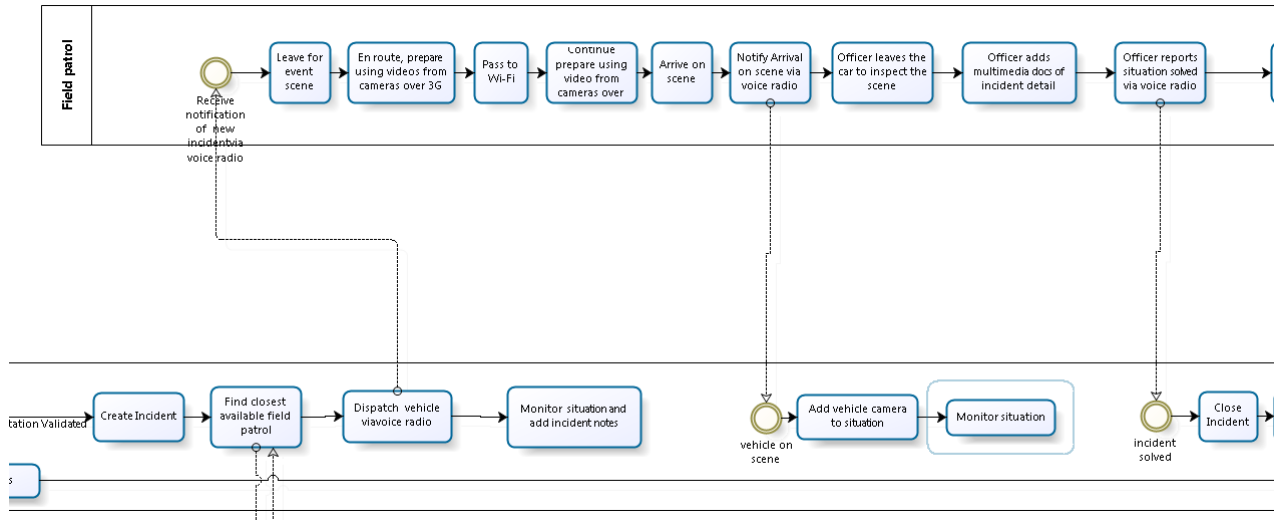
Tractor with applicator  
operator

Tractor with support car  
operator

Core Platform Service

City Service



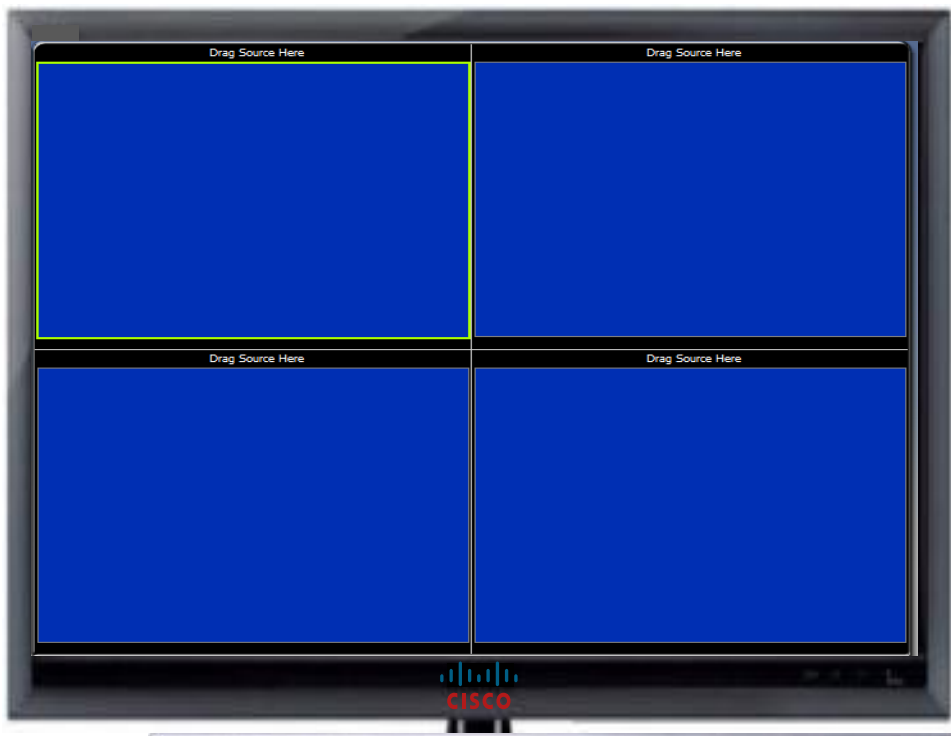


Cisco Unified Personal Communicator

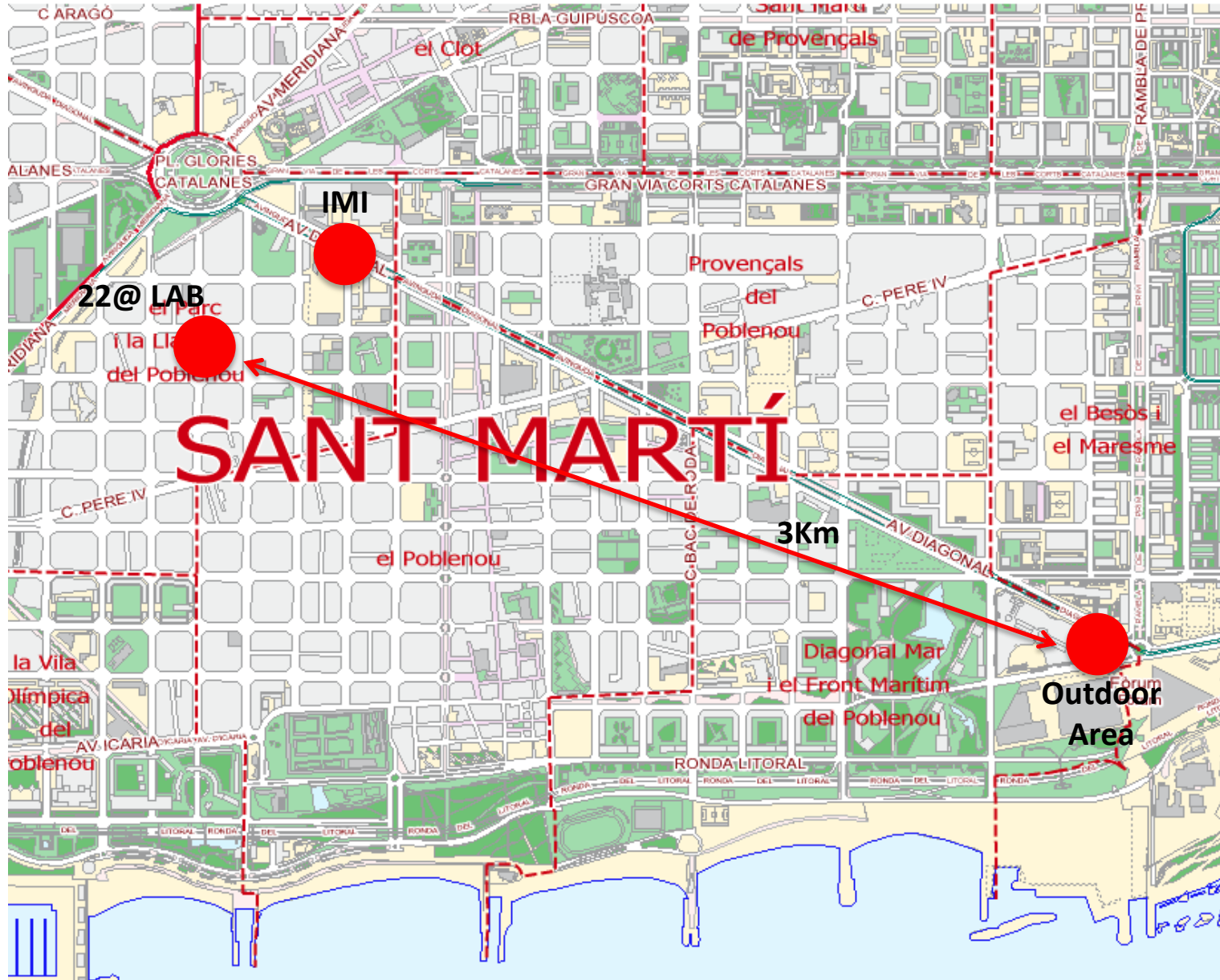
Simulation

<http://www.cisco.com/assets/prod/voice/flash/upc/index.html>





# Outdoor Area Location



# Outdoor Area Sensors

