



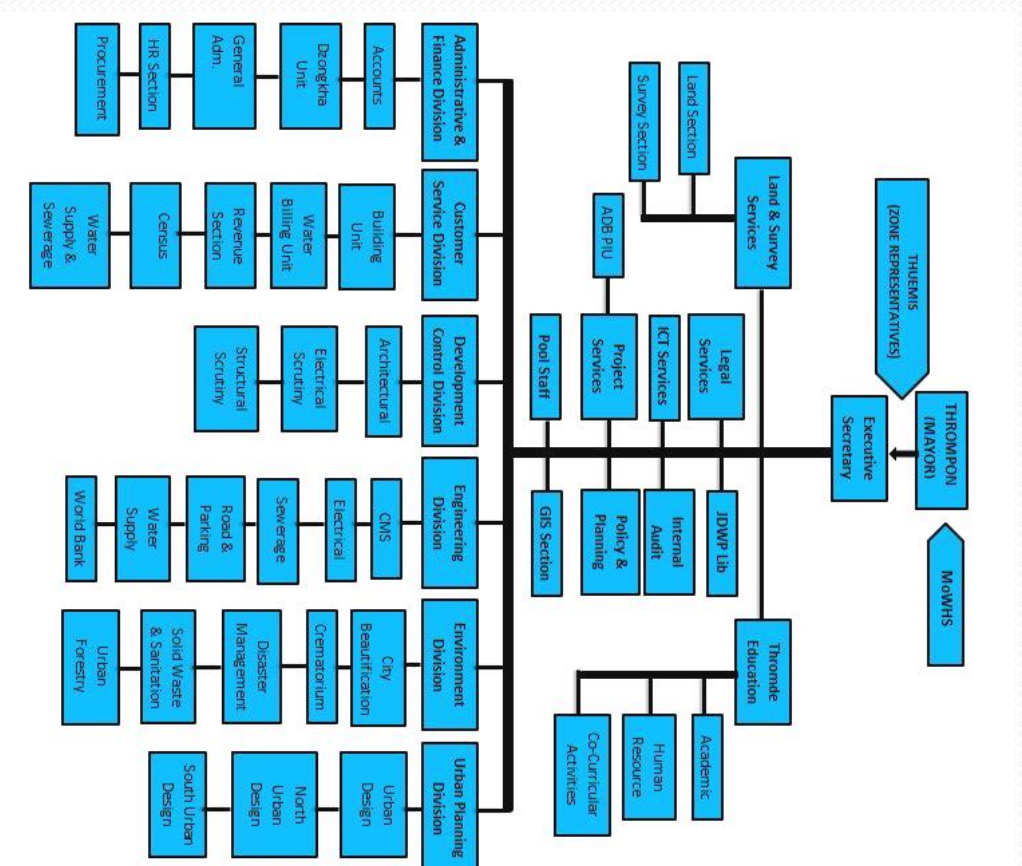
Bhutan is located between two big countries , India in the South, East and West and China in the North.



ABOUT THE ORGANIZATION

- Thimphu is the capital of Bhutan since 1955.
- Thimphu Thromde is one of the municipal organizations, headed by an elected Mayor and city council members.
- First Urban Plan was prepared in 1964 but was not implemented and second Urban Plan in 1986 which guided the development in 1990s
- Strategic plan was prepared in 1998 for 8 sq.km and the Thimphu Structure Plan in 2001 for 26.132 sq.km
- More than 120,000 people

ORGANIZATION STRUCTURE





PROBLEM IDENTIFICATION

- Lack of long-term drinking water master plan.
- Rapid urbanization and population growth.
- Inability of the water supply infrastructure to cope with the growing demand.
- Financial constraint and lack of adequate technical capacity to develop water supply infrastructure.
- Lack of appropriate technology and technical capacity to operate and maintain water supply systems on a sustainable basis.
- Intermittent water supply with high system loss.
- Poor distribution network and inequitable water supply.
- Shortage of drinking water supply due to seasonal variation, especially in lean season from March to June.



Water Supply Improvement Works

Explanation of the Policy, Goal, duration, budget etc:

- Central water supply Scheme completed.
- Water Flagship Program in the 12th Five Year Plan.
- Provision of 24x7 safe drinking water supply.
- The Water Act of Bhutan 2011 (Revision).
- The Water Regulation of Bhutan 2014 (Revision).
- Target population is about 120,000 persons.
- Optimization of distribution network.
- Development and implementation of water safety plan.

KEY ISSUE OF THE PROJECT IMPLEMENTATION

Obstacles and difficulties of the Policy (Project):

- Funding Source
- Land acquisition
- EC, EIA, SIA
- Forest Clearance

Interest and conflicts among Stake-holders:

Interest:

- Access to 24x7 safe drinking water supply in a sustainable manner to improve water and sanitation for Public health.
- Coordination.

Favorable and unfavorable condition related to the Policy:

Favorable:

- Strong Political will

KEY ISSUES

- Selection of appropriate Technology
- Selection of pipe material
- Limited Technical expertise
- Coordination
- Sustainable O&M
- Capacity Building

KEY STRATEGIES FOR SUCCESS OF THE PROJECT

1. Your (or yours team's or your organization's) role in solving the Problem.
 - Participate and implement water flagship program successfully till 2023
 - Some of the activities to ensure the success of the flagship program are:*
 - Optimization of distribution network for equitable water supply distribution.
 - Reduction of non-revenue/unaccounted for water from the present level.
 - 100% metering of all the water supply connections.
 - Setting up a robust operation and maintenance monitoring system.
 - Monitoring water quality as per Bhutan Drinking Water Quality Standards 2016.
 - Ensure sustainable operation and maintenance.



LESSON AND IMPLICATIONS

- Adequate time to be allotted for project planning
- Timely acquisition of land required for the project
- Coordination with relevant stake holders
- Selection of appropriate technology
- Synchronization of implementation of project components
- Capacity building to ensure sustainability of the project

- By: Penjor Dukpa
- Kinley Norbu
- Choden



**Thank
You!!!**

www.thebodytransformation.com