

**Prefeitura da Cidade do Rio  
de Janeiro**  
Rio de Janeiro City Hall

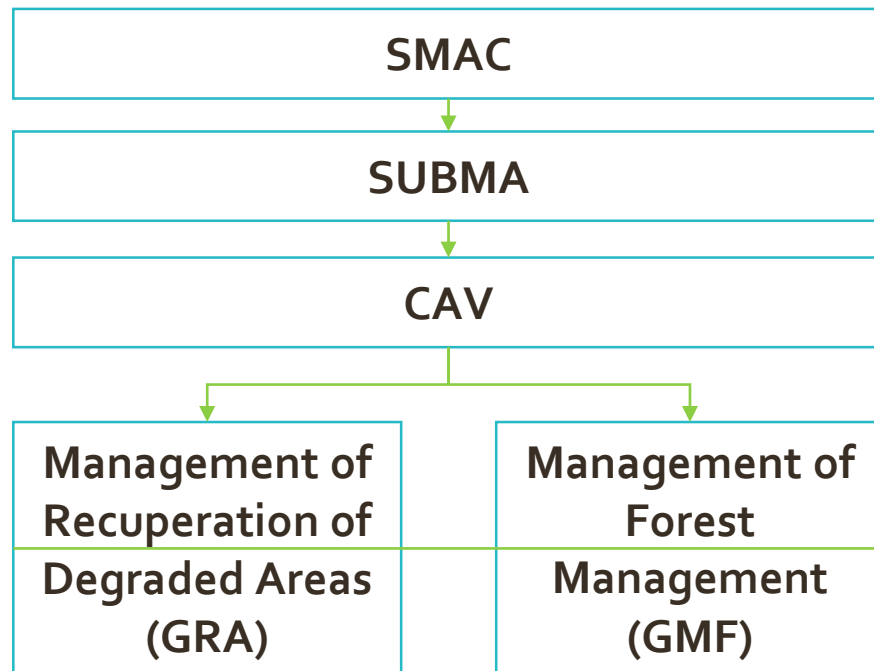
**Coordination of  
Green Areas  
(CAV)**



Foto: Mirnele Rua



# Reforestation



## Staff

- 8 Forest Engineers
- 7 Agronomists
- 1 Biologist
- 2 administrative technicians



## Logistical support

- 2 Pickup trucks
- 2 Trucks



## Forest Nurseries

- Fazenda Modelo
- Campo Grande
- Vila Isabel
- Grumari
- Rizzini

# Reforestation

## ❖ History of Environmental Recovery in Rio de Janeiro city.

1984



City Department for Social Development begins environmental recovery in the city.



São José Operário - 1986

- So far, we reforested more than **3.400 hectares** with planting of **10 million seedlings**;
- We currently have over **100 projects** that provide direct income for over **600 people**;
- The Mutirão Reforestation Program works in partnership with volunteers who are paid for this;
- In places where there are no communities the work is done by companies.

# Reforestation

## ❖ Forest nurseries:

- In 2019, we have **5 forest nurseries** with production capacity exceeding **1 million seedlings per year**.
- The first forest nursery was opened in 1986 with the beginning of the Program. In Brazil there are more than 33.000 plants with seeds. Our nurseries have produced more than **300 species** since the beginning of the program.
- We have developed protocols to produce rare species seedlings.



# Reforestation

## ❖ Objectives:

- To increase vegetation cover;
- To connect between fragments, with the implementation of green corridors;
- To improve microclimate;
- To increase wildlife;
- To restore degraded natural environments;
- To improve health of residents;
- To prevent community expansion;
- To reduce landslides and floods;
- To reduce fire occurrence;
- To improve the community appreciation.



# Reforestation

## ❖ Main difficulties

- Unsafe places to work;
- Improper disposal of garbage;
- Management of exotic and invasive species;
- Fires;
- Invasion of areas reforested by cattle, horses etc.



# Reforestation

## Acting places



Mangroves



Slopes



Restinga



Riparian forest

# Reforestation

## Production Cycle



collect



processing



peaking



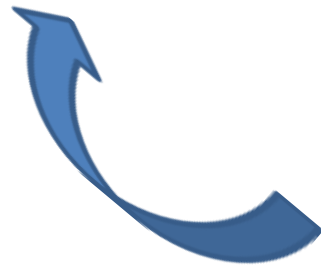
rusting



transport



planting





# Reforestation

## Results



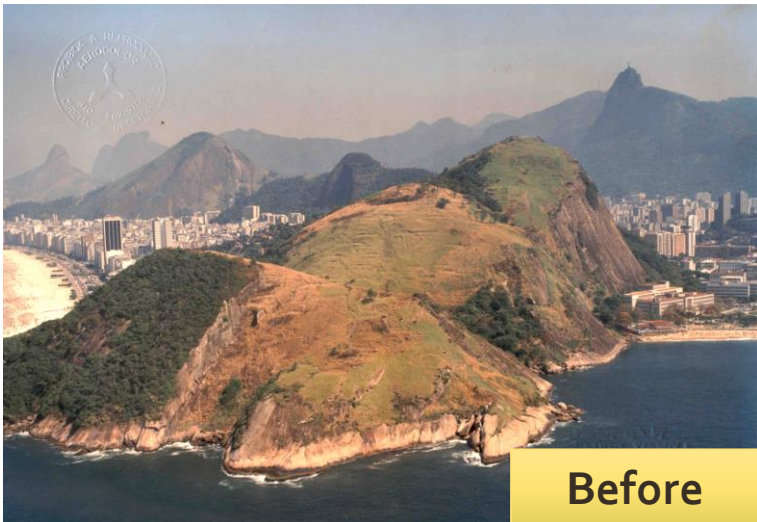
**Before**



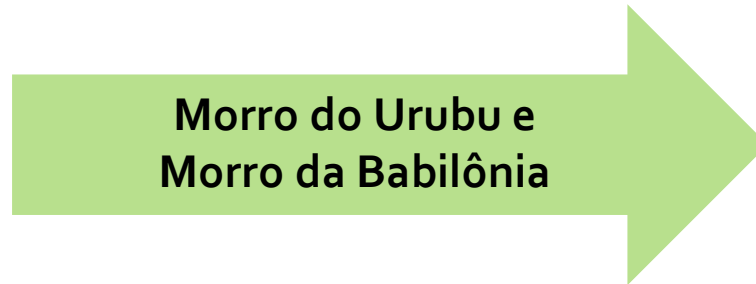
**Rocinha**



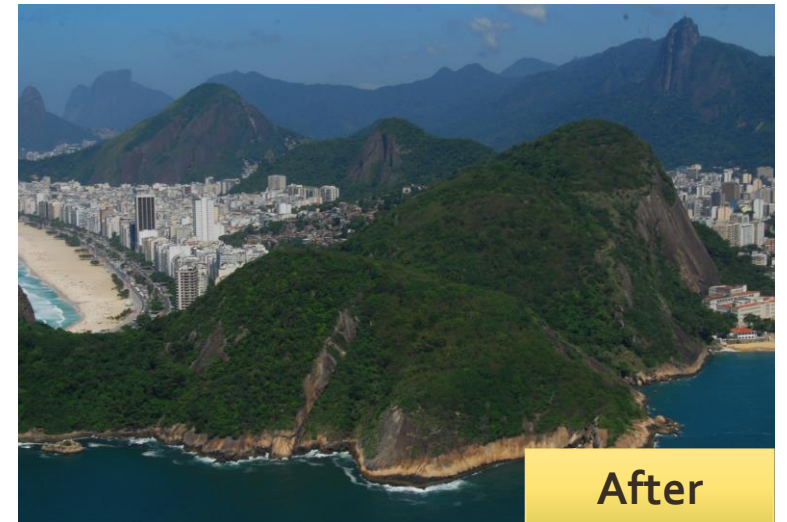
**After**



**Before**



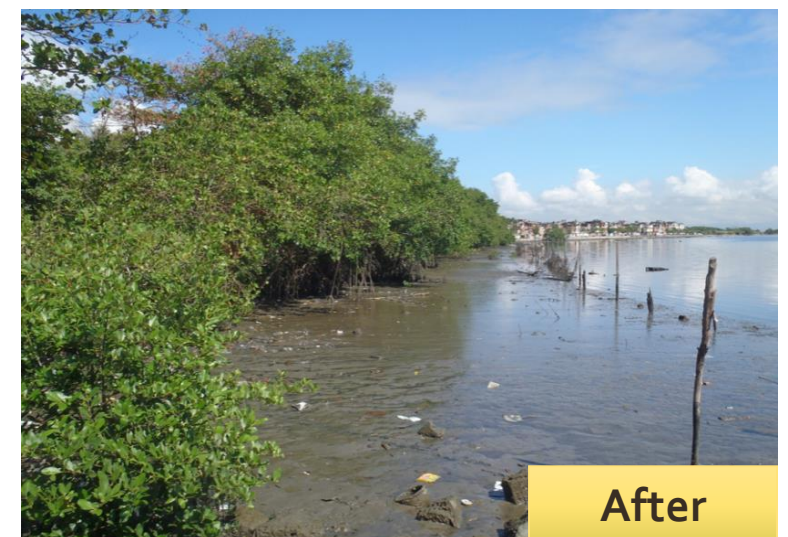
**Morro do Urubu e  
Morro da Babilônia**



**After**

# Reforestation

## Results



Rio de Janeiro City Hall  
City Department of Environment

**RIO**  
PREFEITURA

MEIO AMBIENTE

**Thank you!**

