



desarrollo
urbano

MADRID

METROPOLITAN AND LOCAL GREEN STRATEGY



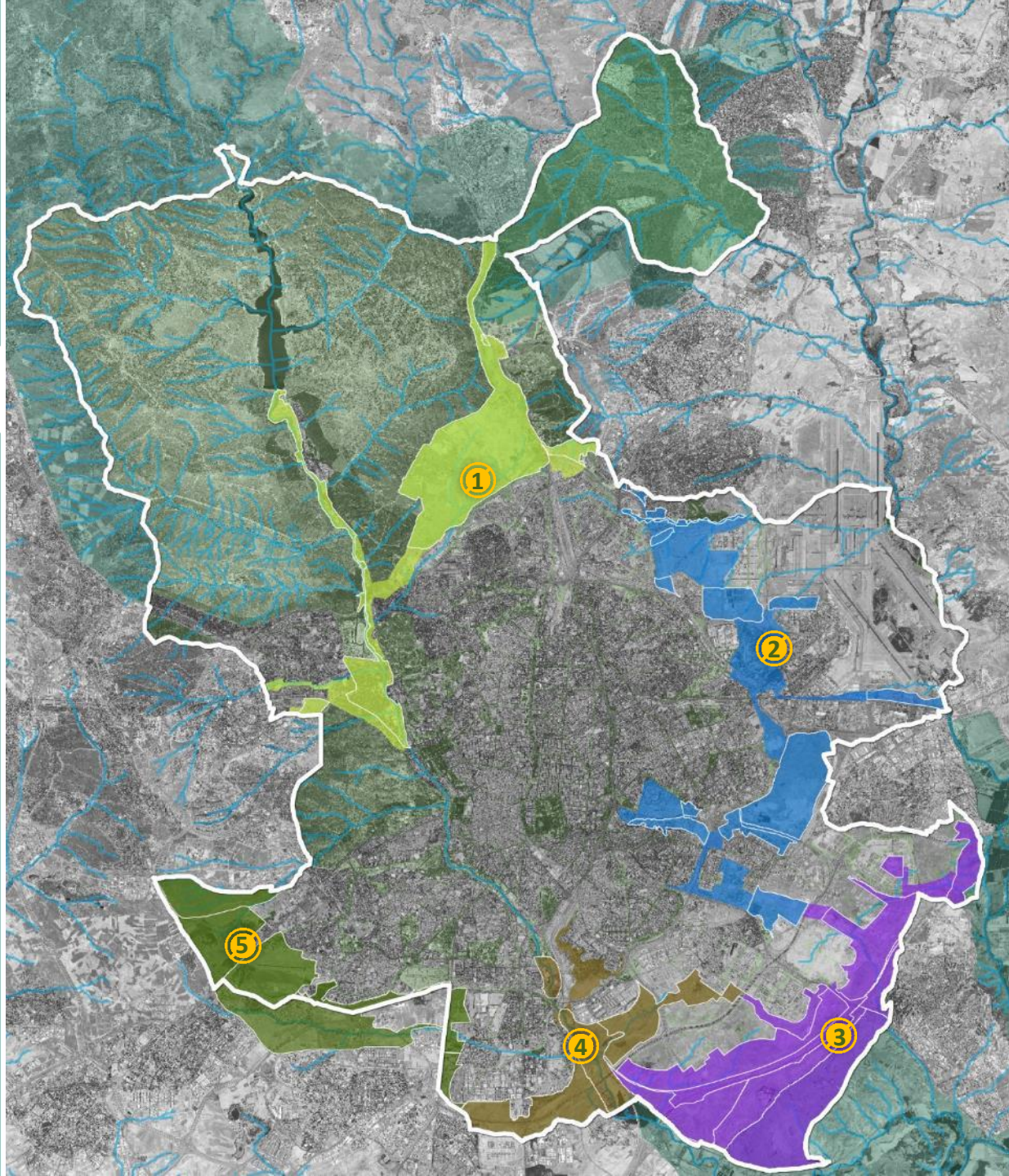
BOSQUE
METROPOLITANO



will be a 75 km peripheral green belt embracing the city that will entail more than 2.300 hectares (ha) of new urban forests, connections with existing areas and the planting of more than 2 Million trees.

The main objectives are the mitigation of urban heat island to ensure that our city is more resilient against climate change, to improve biodiversity, air quality as well as social cohesion and quality of life

Targeted areas



1. BETWEEN NATURAL FORESTS

Connections of the monte de El Pardo with the monte de Valdeatas and Casa de Campo. Continuity of the river axis of the Manzanares River

2. JOINING URBAN PARKS

Connections of the metropolitan free spaces system, Valdebebas, Fairgrounds, Wedge of O'Donnell, Vicalvarada, Valdebernardo and Cerro Almodóvar with Nueva Centralidad del Este

3. THE SOUTHEAST GREEN RING

Improvement of the free space systems of the southeast growths, from the Cerro de la Herradura to the Cantiles del Manzanares

4. THE SOUTH FLUVIAL PARKS

Connections of the river systems of the Manzanares river and La Gavia stream with the integration of large peripheral pieces of free spaces in Entrevías, La Atalayuela, Mercamadrid and Butarque

5. IN THE METROPOLITAN RING

Integration of the southwest metropolitan system (Getafe, Leganés, Alcorcón) with the Casa de Campo. Improvement of Meaques stream river environments

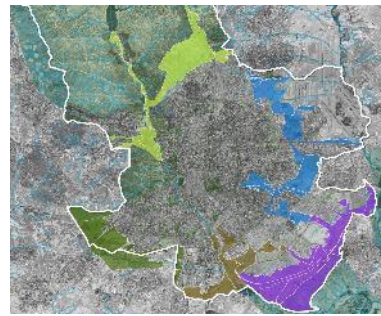


International Contest



INTERNATIONAL CONTEST

5
Targeted areas
35
Sites to act



Environmental
Equipment



Different typologies
of spaces

- Protected Regional Park
- Agroecological Park
- Metropolitan Park
- Renatured Park



Green corridor

Vertebrate elements that
guarantee environmental
connectivity



It is an international call, through a contest, to carry out innovative environmental projects, with vegetation adapted to hard conditions, to fight against the urban heat island, with low water requirements, new planting methodologies, water management and capable of generating microclimates

More than **2** million
new trees

2.364 ha of new
forest

300 ha
vacant plots in neighborhoods
for agriculture

***Trees and forests ensure that
our city is economically,
socially and environmentally
more sustainable and
resilient***



desarrollo
urbano

MADRID

dirección general de
planificación estratégica



estrategiaurbana.madrid.es