



# Second Kampala Institutional & Infrastructure Development Project

By: JOSEPHINE NALUBWAMA MUKASA  
Uganda; Kampala City

Together we can transform Kampala city

# MAP OF AFRICA: LOCATION OF UGANDA



UGANDA

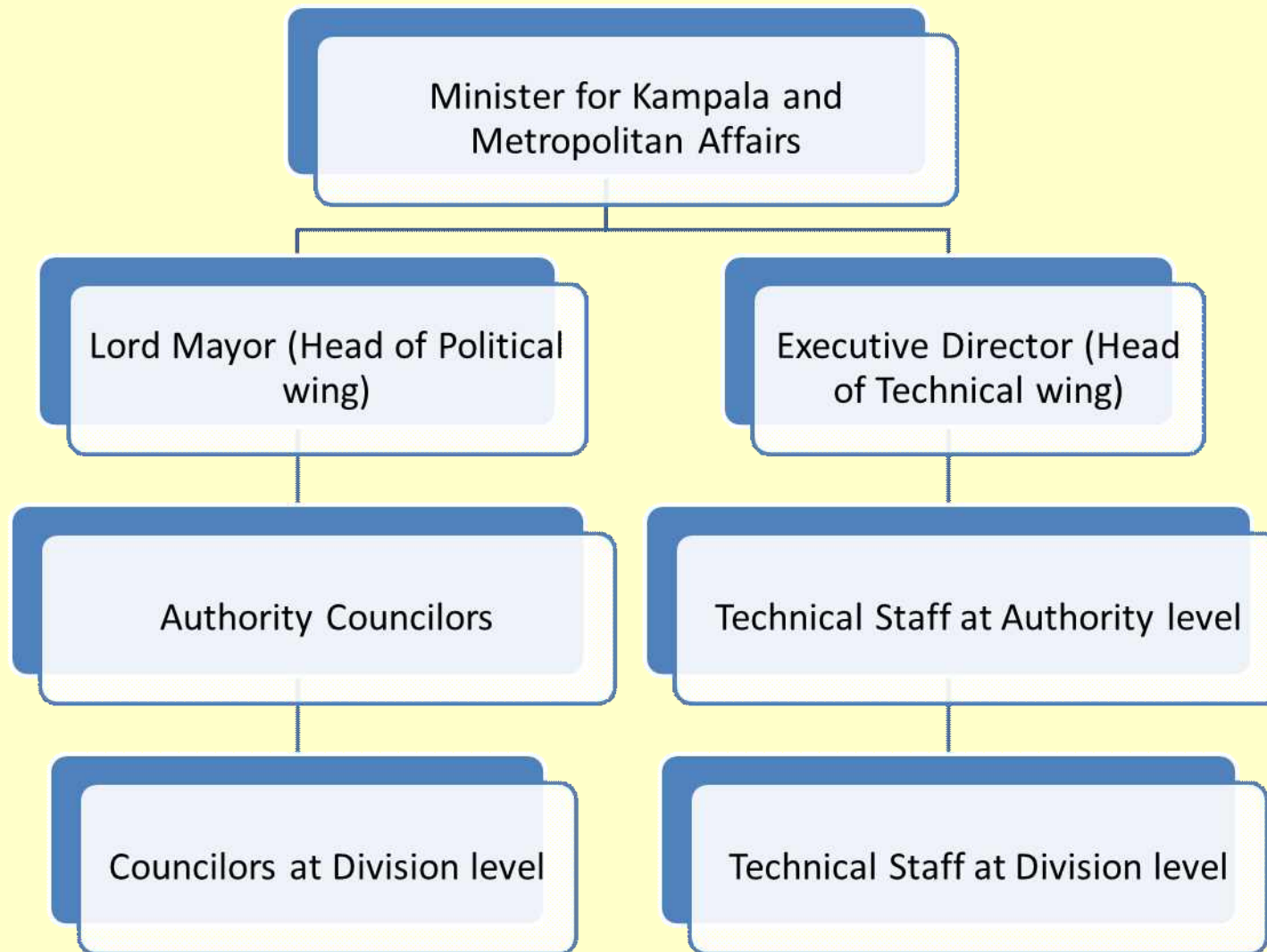
# KAMPALA CITY



- Located in Kampala district -North of Lake Victoria
- Comprised of five Divisions, Kampala Central Division, Kawempe, Makindye, Nakawa, and Lubaga Division.
- Size: 189Km<sup>2</sup>
- Population: 1.5million (night)  
Over 3 million (Day)



# CITY ADMINISTRATION STRUCTURE



# KAMPALA INFRASTRUCTURE AND INSTITUTIONAL DEVELOPMENT PROJECT




CONGESTION ON THE ROADS



FLOODING IN THE CITY

Improving  
mobility,  
connectivity in  
the city



 **KCCA** POOR DRAINAGE  
KAMPALA CAPITAL CITY AUTHORITY SYSTEM  
*For a better City*



NON MOTORABLE ROADS

# OVERVIEW OF THE PROJECT

- **Goal:** To enhance infrastructure and Institutional capacity of the city and improve urban mobility for inclusive economic growth.
- **Project Duration:** 5 years (FY2014 – FY 2019)
- **Project Financing:** The project is financed through an Investment Project Financing (IPF) facility of US\$175 million (equivalent) IDA Credit and GoU/KCCA counterpart funding of US\$8.75 million equivalents. The total project financing is US\$183.75 million
- **Stake holders:** Communities, World Bank, Government of Uganda, Utility companies

## KEY ISSUES OF PROJECT IMPLEMENTATION

- Delays in securing right of way due to contestation of the approved values, mortgaged titles, Titles with Caveats, absent land lords among others;
- Delay in securing land for resettlement of project affected persons;
- Uncooperative property owners in providing pertinent information;
- Sometimes poor political atmosphere – the different political campaigns
- Limited Public awareness – justifying the need for more active change management

# Strategies for success; involvement of local leaders



*Division entry meeting with the Mayors and Town Clerk –  
Makindye Division*



# STRATEGIES FOR SUCCESS: community engagement



*Makindye Division Mayor addressing property owners In  
Luwafu Parish*

# STRATEGIES FOR SUCCESS OF PROJECT

- Constituting and training community grievance management committees
- Feedback meetings at community level

# After intervention



## Lessons & implications

- Ensuring sufficient capacity for monitoring adherence to social and environmental safeguards.
- Stakeholder engagement is key and should be continuous throughout the project life.
- Involvement of political leaders at the beginning enhances community buy-in.
- Timely change management engagements and continuous stakeholder engagements throughout the project life
- Good level of supervision that ensures high level of standards;
- Staff skill enhancement in quality data collection and customer engagements;
- Stable political atmosphere suggests less barriers to implementation;



*THANK YOU*