

臺北  
臺灣

# Taipei Taiwan

City Paper

An aerial night view of Taipei, Taiwan, showing a dense urban landscape with numerous illuminated buildings and a prominent highway running through the center. The background is dark, with some distant mountains visible under a starry sky.

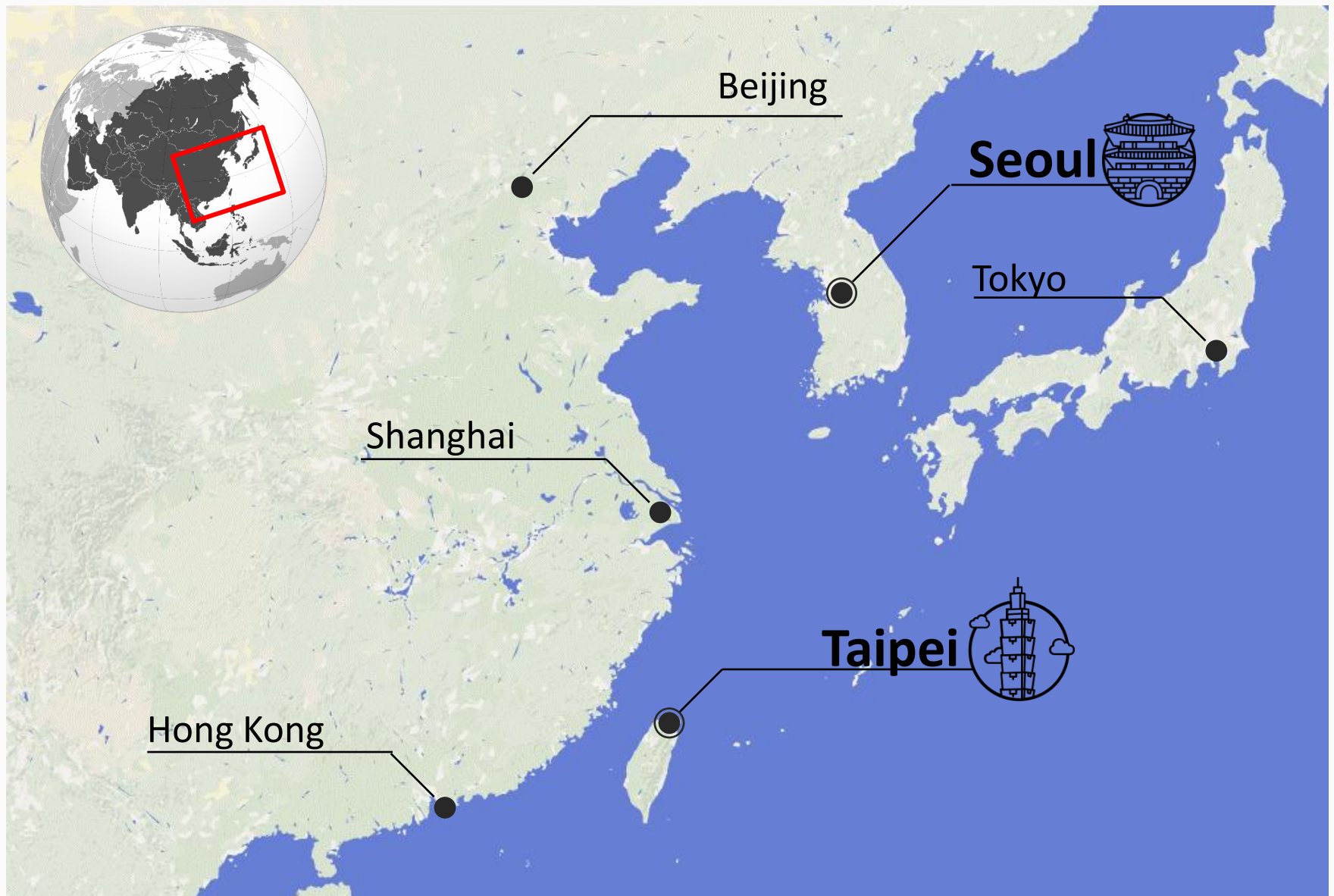
Section

1

Introduction of  
Taipei



# Location



# Taipei & Seoul



## Taipei City



271.8



2,692,118



9,904



113.07



55

Area  
(km<sup>2</sup>)

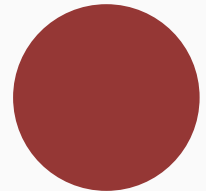
Population

Population Density  
(people/ km<sup>2</sup>)

Aging Index  
(number of elders per 100 persons  
younger than 15 years old)

Cost of Living  
World Ranking\*

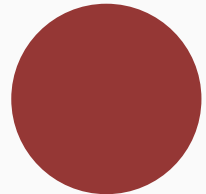
## Seoul



605.3



10,236,408



17,473



88.7

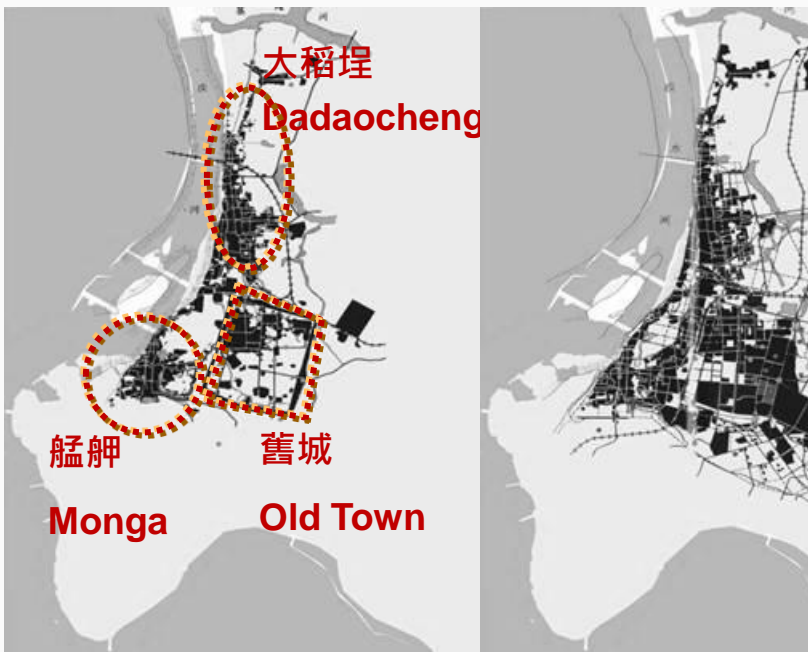


6

\*Worldwide Cost of Living Report 2017



# The History of Taipei Urban



-1895

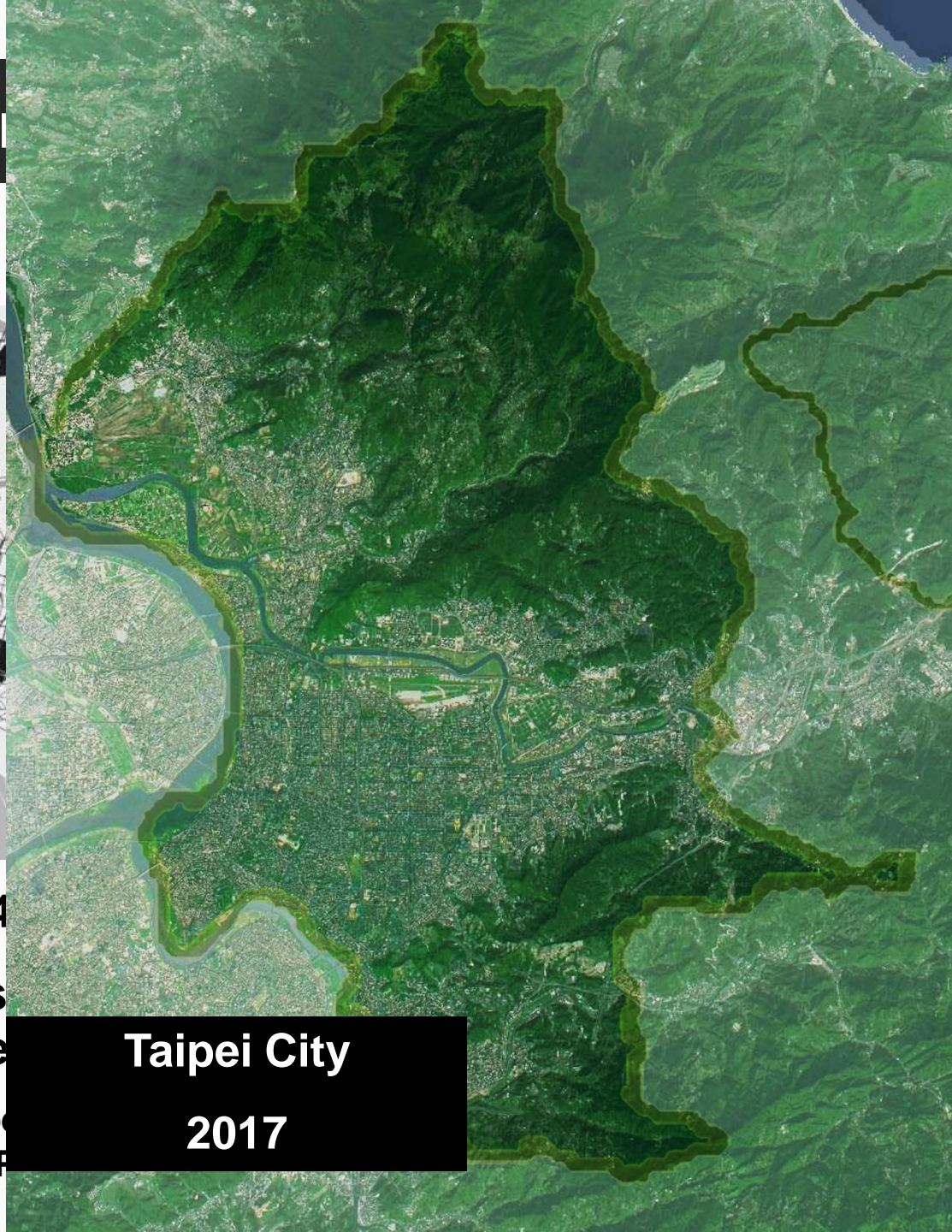
Qing Dynasty



1905-1945

Japanese  
Colonial Period

“City Proper”  
Modification Period



Taipei City

2017

# Aging Society



- Facing the structural changes in the city's population, we realized that it would soon have to tackle issues related to a population with greater numbers of old people, such as rising demand for facilities serving seniors in urban areas.

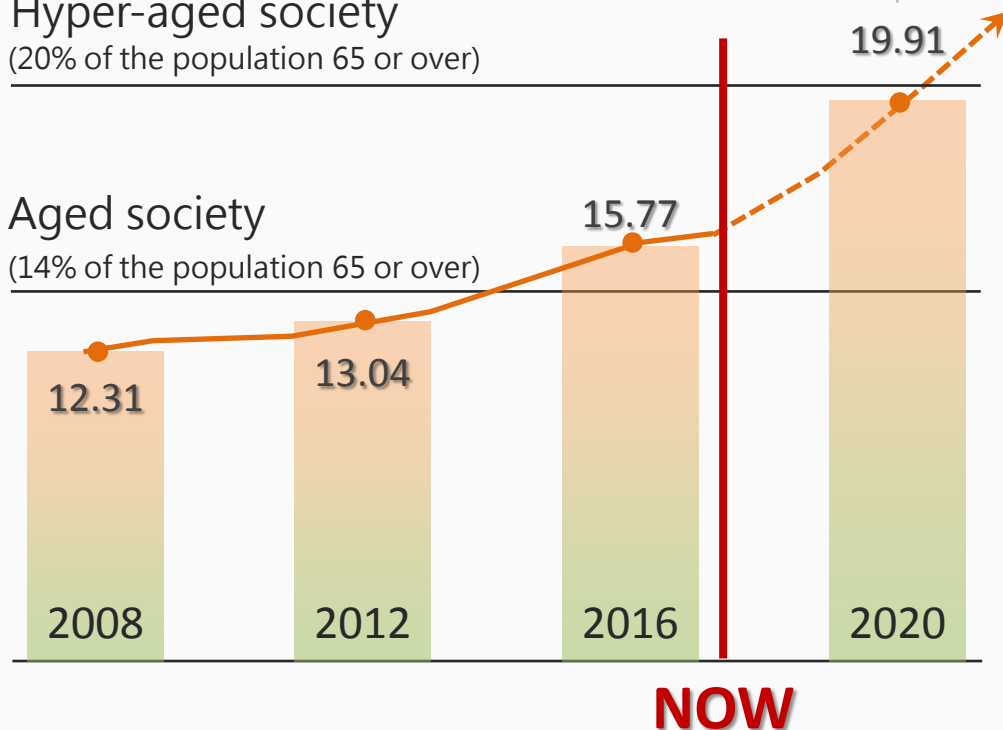
Taipei City will become a  
hyper-aged society by 2020

Hyper-aged society

(20% of the population 65 or over)

Aged society

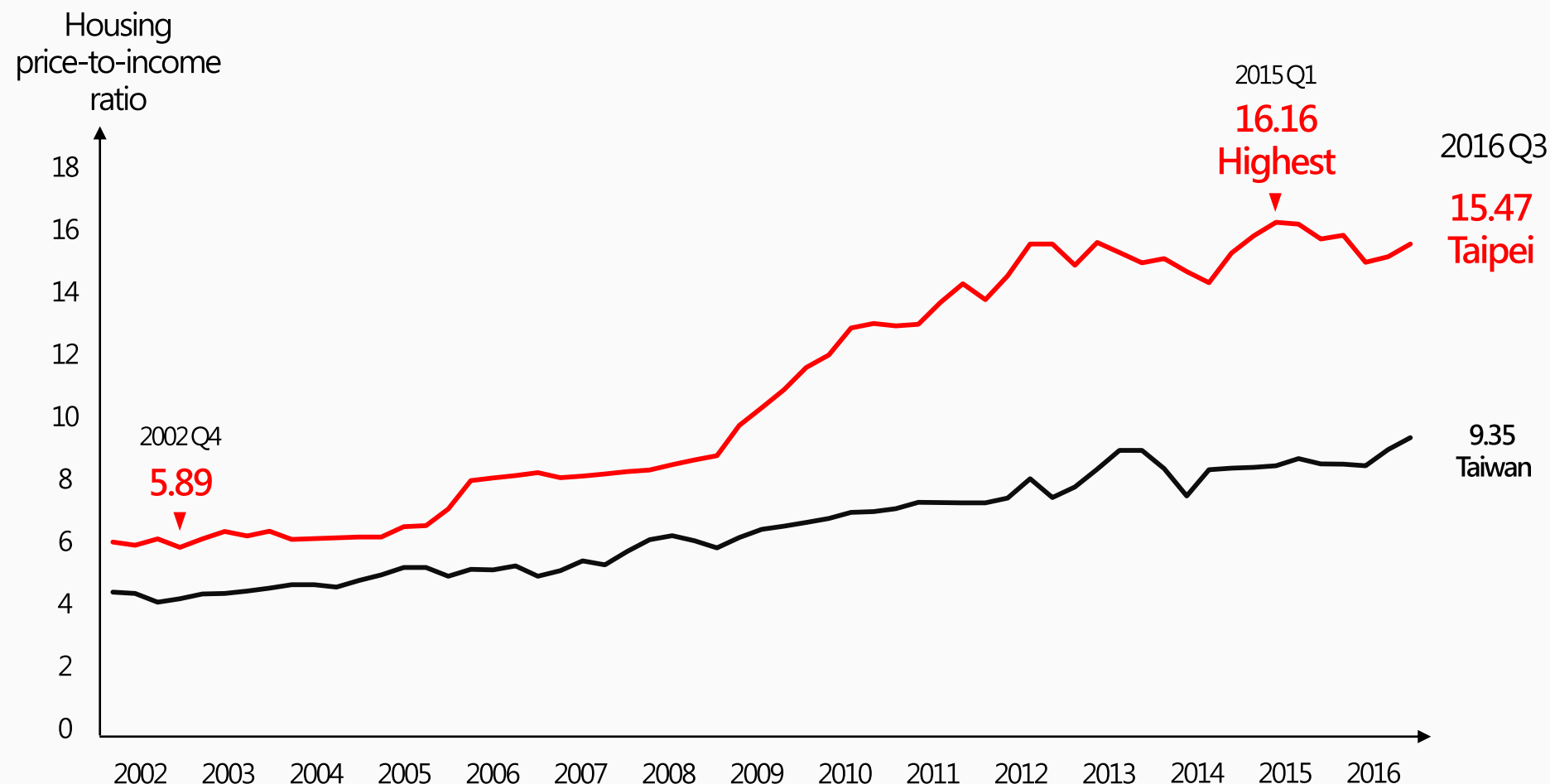
(14% of the population 65 or over)





# Unaffordable Housing

- Taipei is home to one of the most unaffordable housing markets in the world.
- Official government data places the ratio for housing prices to income in the city at 15.



# Disaster Threats

- Taiwan is one of the world's most vulnerable countries.





# Blighted Areas and Buildings

- More than 60% of houses in Taipei are over 30 years old, which are 570,029 houses in total.



An aerial, high-angle photograph of Taipei, Taiwan, showing a dense urban landscape with numerous skyscrapers and buildings. The image is in grayscale and serves as the background for the title slide.

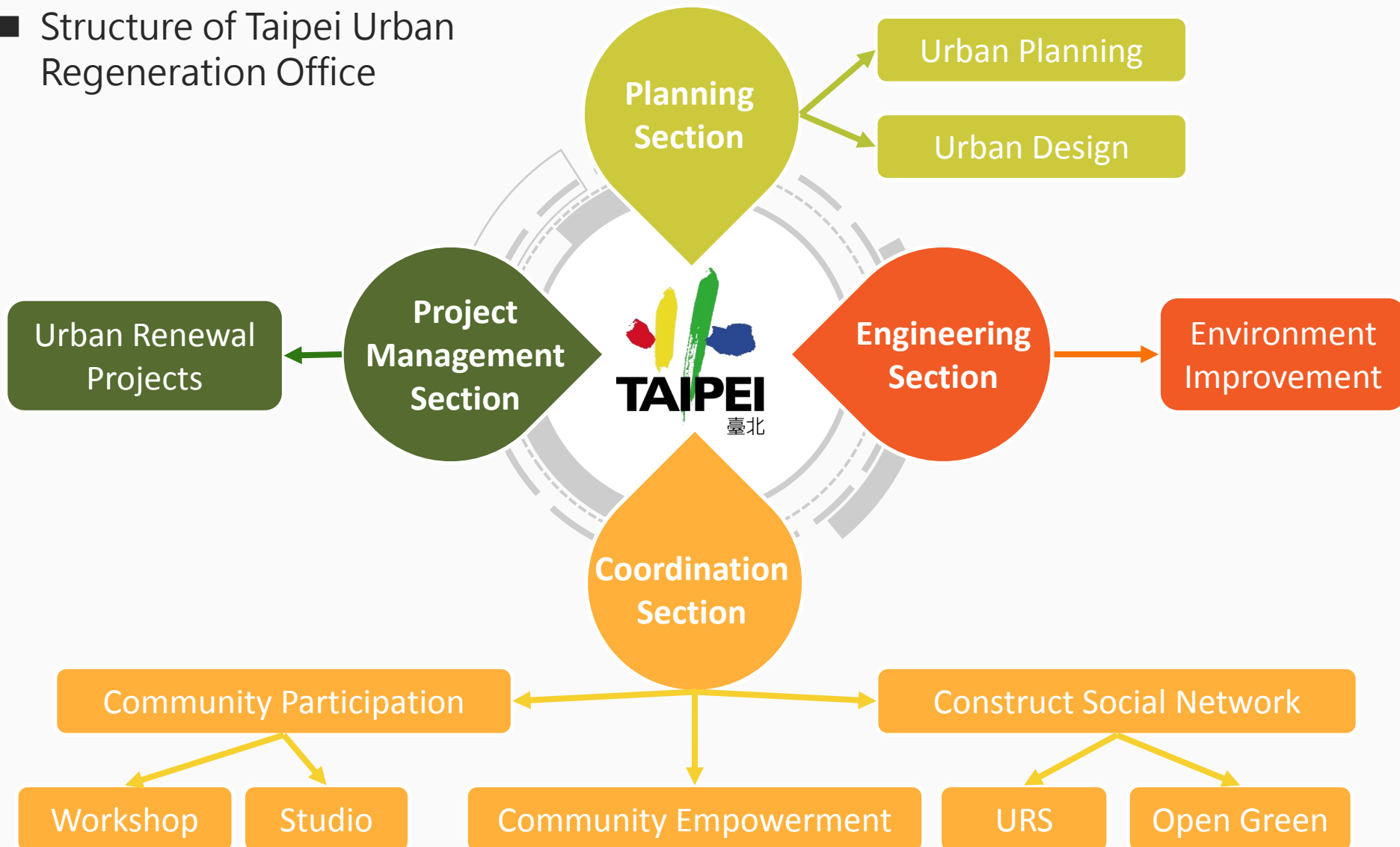
Section

2

Urban Regeneration In  
Taipei

# Urban Regeneration Strategies

## ■ Structure of Taipei Urban Regeneration Office





# Community-led Regeneration Approach

## Community Empowerment



## Community Participation



## Construct Social Network

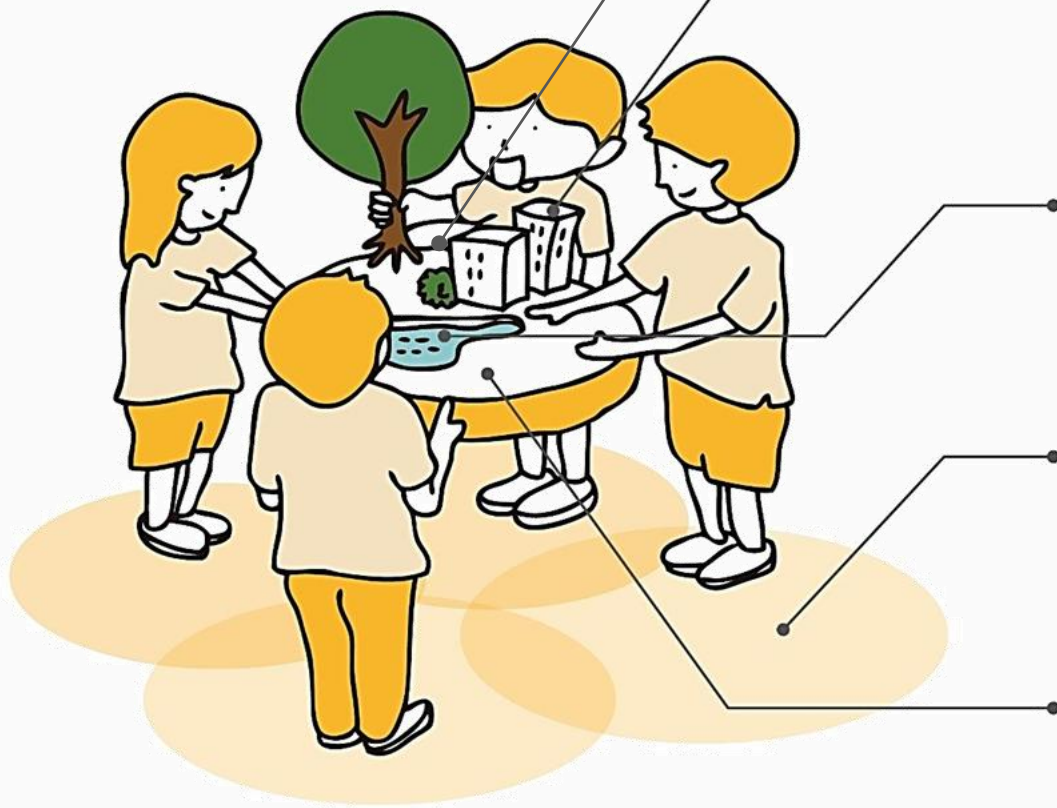


▲ Workshops and Studios

▲ Community Planning

# OPEN GREEN

## OPEN GREEN!



Find a Under-used Space



Connect Landowners to Get Agreement



Initiate Community Conversation and Start Green Plan



Green Actions in Neighborhood

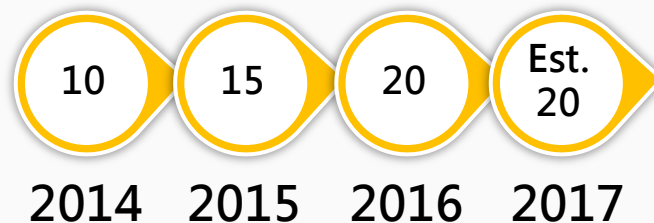


Connect Green Actions to build a City-wide Green Plan



# OPEN GREEN

■ 41 sites since 2013.



## Environment Improvement

環境美化

/ 藝術介入  
/ 社區共創  
/ 長者關懷

笑・顧食堂  
(文山區史都華路一段100巷  
10號) / 社區、財政局



## Urban Agriculture

社區菜園

/ 都市更新地區  
/ 台大生發路  
/ 共耕共育共食  
/ 社區共同創作

組團菜依廊  
(中正區東門里仁愛路一段28  
34號) / 社區、農夫



## Art and Creative Intervention

/ 生活空間  
/ 永續發展  
/ 色彩美學

UPONEX  
(大安區南門路一段104號)  
社區、藝術家



## Environmental Education

社區菜園

/ 聯合社群進入社區  
/ 社區合作  
/ 環境永續發展  
/ 永續教育成果

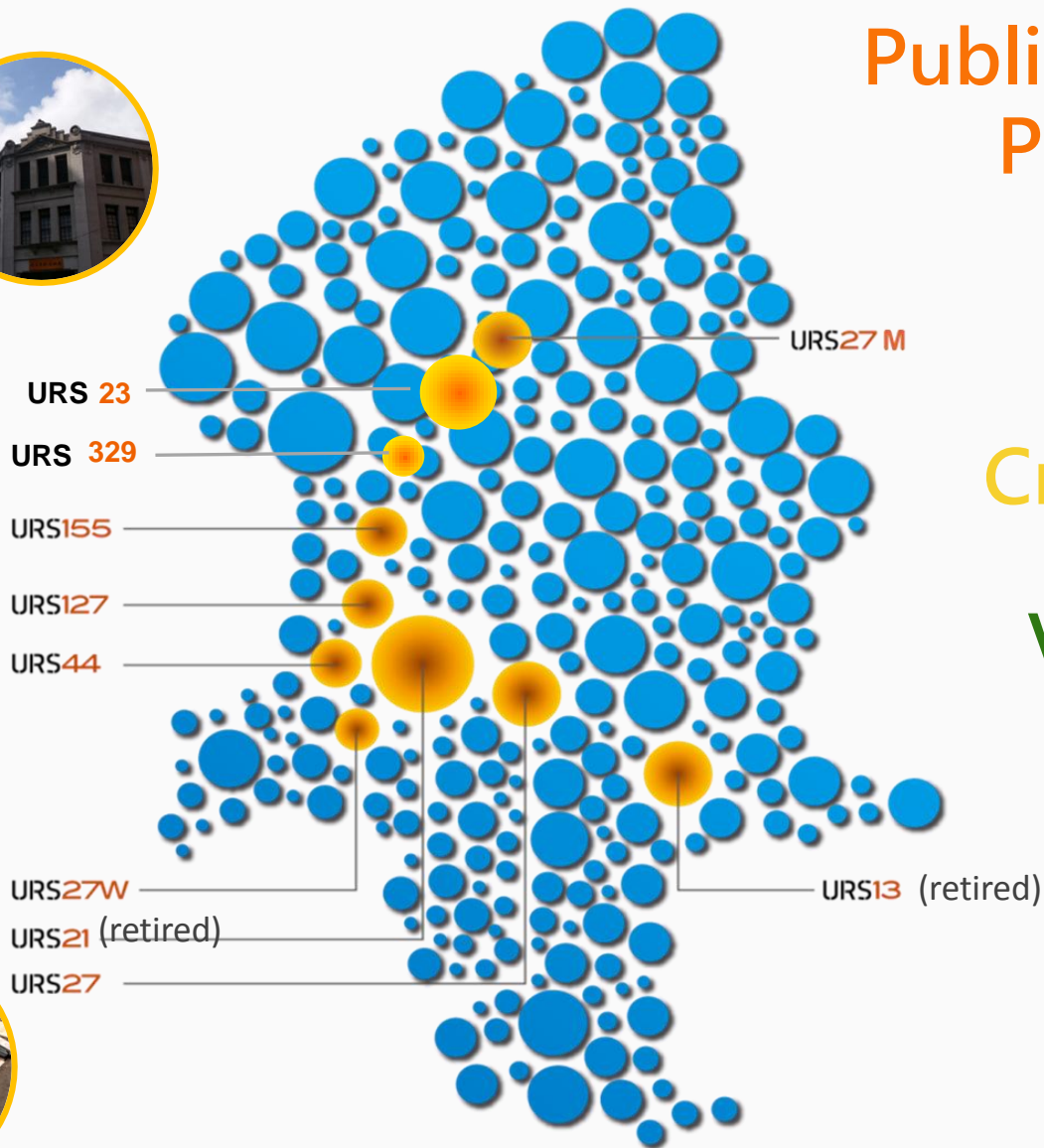
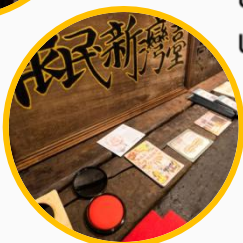
興福樓門綠生活  
(文山區興福樓里興福路53巷14號)  
興福樓、社區、藝術家



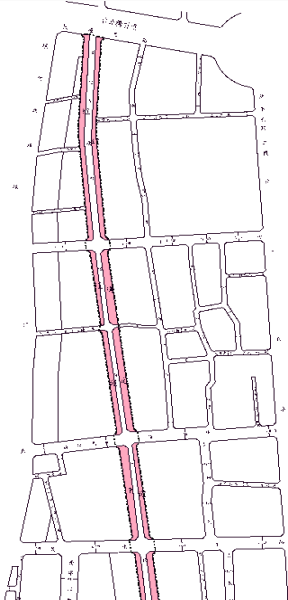
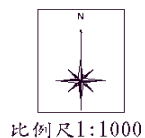


# URS Projects

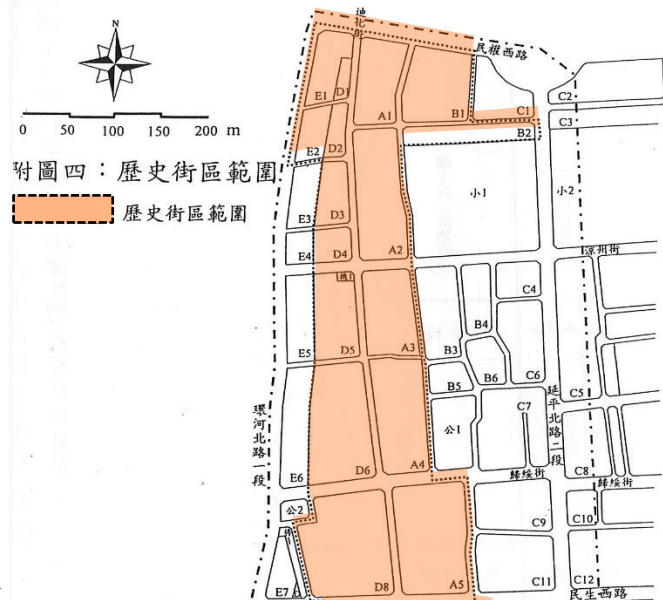
Public Underuse  
Property  
X  
Reuse  
+  
Creativity  
X  
Vitality



大稻埕  
Dadaocheng



附圖四：歷史街區範圍  
歷史街區範圍



-1895

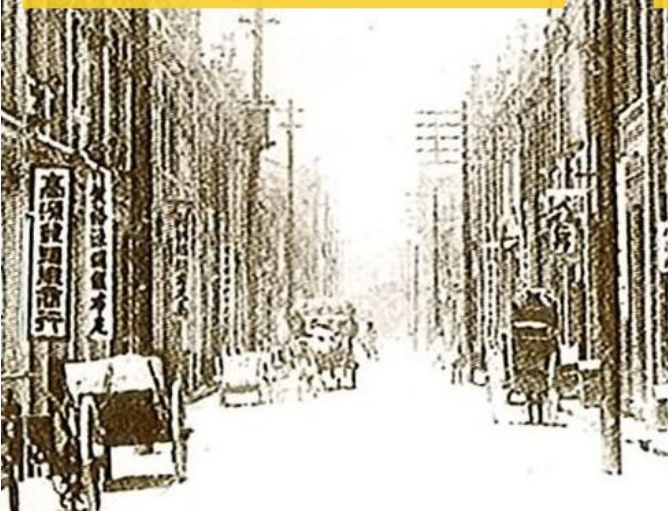
Qing Dynasty

1980s

Conflict Between New  
Development and Historical  
Building Conservation

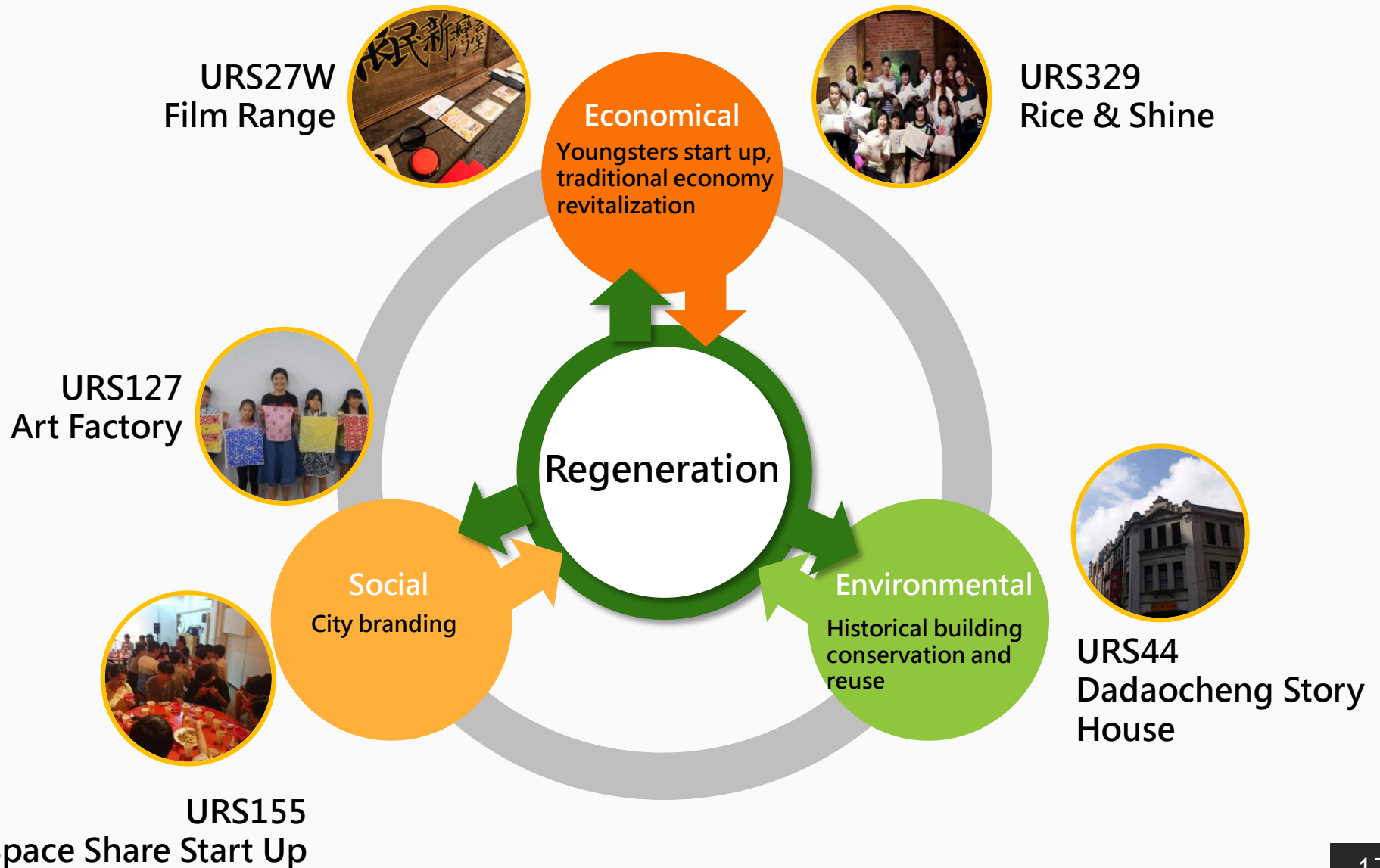
1990s-

Dadaocheng Historical  
District

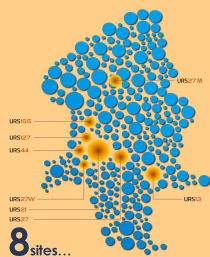
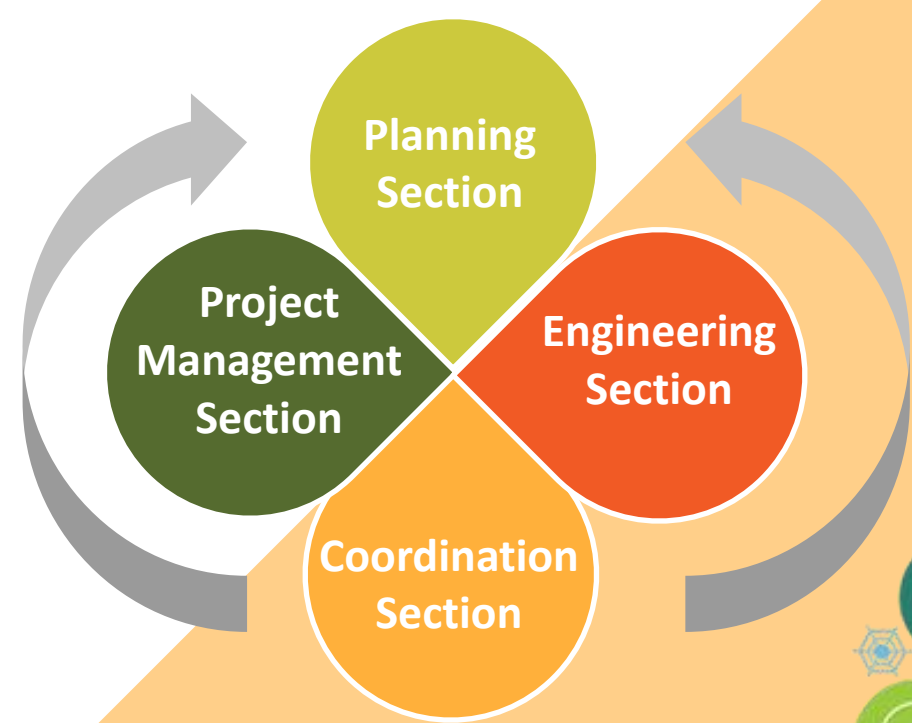




# URS Projects







URS21

**OPEN  
GREEN!**