



City Paper Presentation

COMMUNITY BASED SANITATION

Jakarta Provincial Government

Sustainable Water Management Training Program
Metropolis International Training Center at Seoul HRD Center
17 – 24 June 2018

TABLE OF CONTAIN

COMMUNITY BASED SANITATION



CITY CHARACTERISTIC



PROBLEM IDENTIFICATION



CITY PROJECT

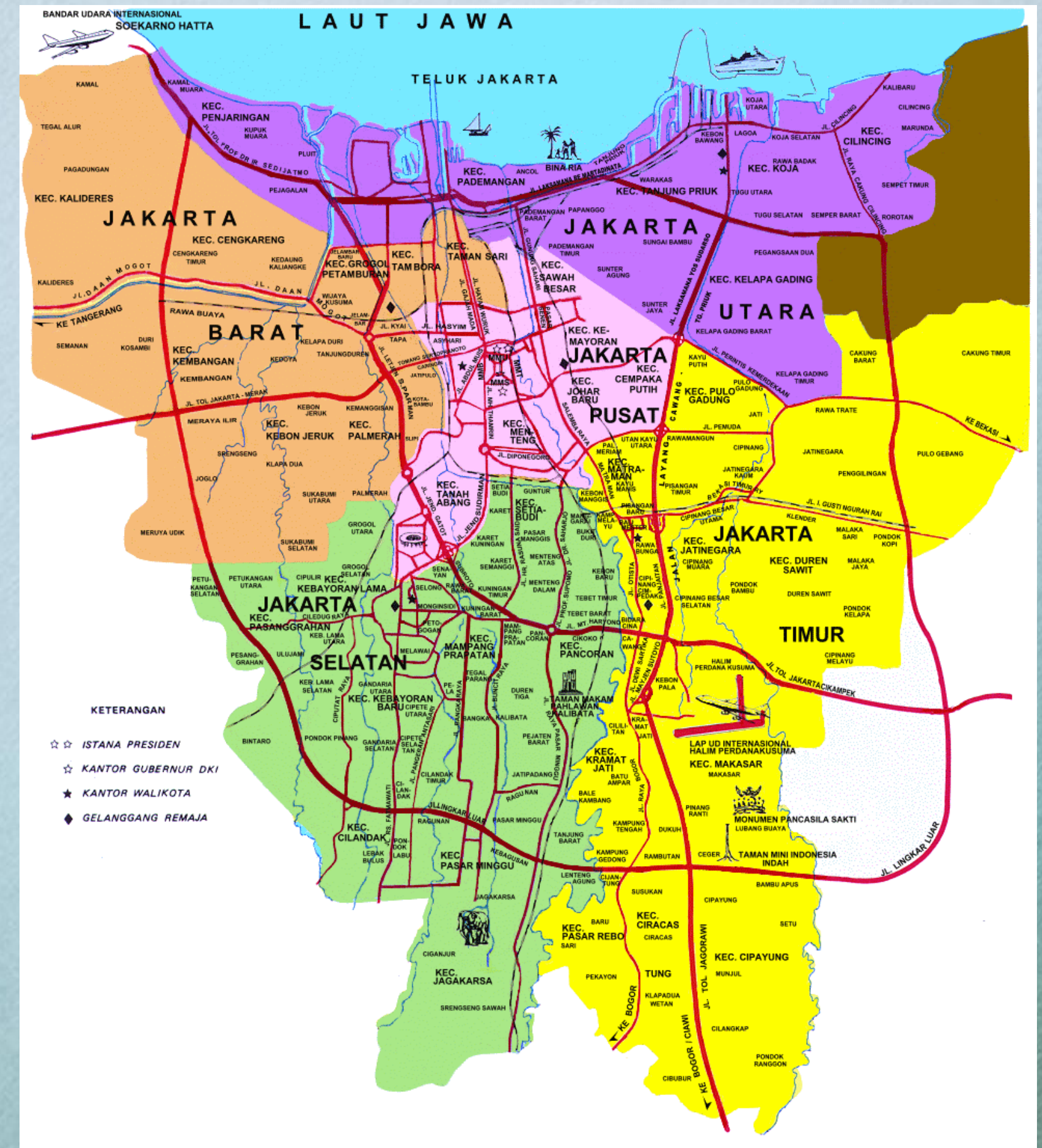


KEY ISSUES PROJECT



TARGET

CITY LOCATION

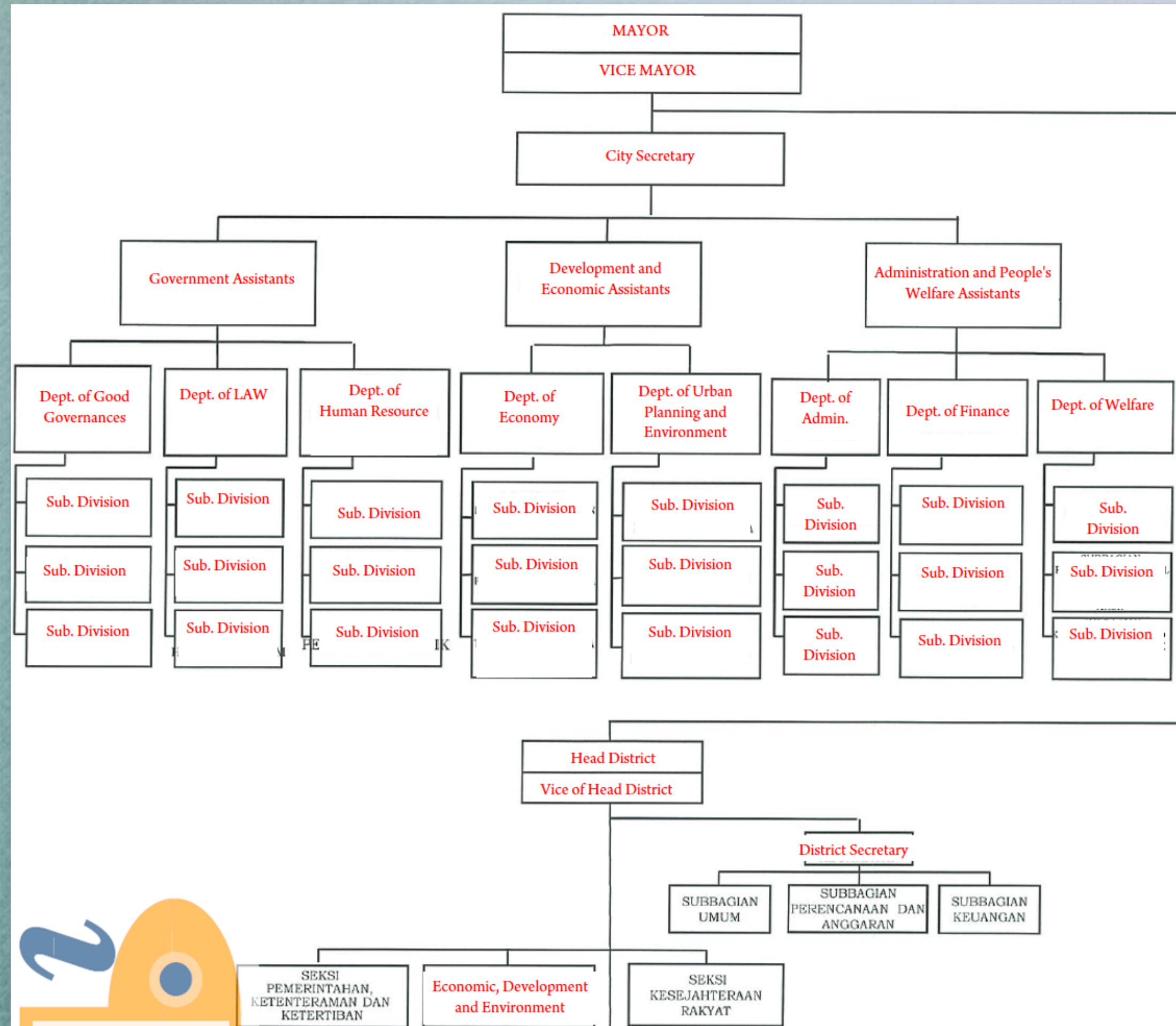


CHARACTERISTIC OF THE CITY

Jakarta's Cities/Municipalities (*Kota Administrasi/Kotamadya*)

City/Regency	Area (km ²)	Total population (2010 Census)	Total population (2014) ^[8]	Population Density (per km ²) in 2010	Population Density (per km ²) in 2014	HDI ^[67] 2015 Estimates
South Jakarta (<i>Jakarta Selatan</i>)	141.27	2,057,080	2,164,070	14,561	15,319	0.833 (Very High)
East Jakarta (<i>Jakarta Timur</i>)	188.03	2,687,027	2,817,994	14,290	14,987	0.807 (Very High)
Central Jakarta (<i>Jakarta Pusat</i>)	48.13	898,883	910,381	18,676	18,915	0.796 (High)
West Jakarta (<i>Jakarta Barat</i>)	129.54	2,278,825	2,430,410	17,592	18,762	0.797 (High)
North Jakarta (<i>Jakarta Utara</i>)	146.66	1,645,312	1,729,444	11,219	11,792	0.796 (High)
Thousand Islands (<i>Kepulauan Seribu</i>)	8.7	21,071	23,011	2,422	2,645	0.688 (Medium)

CITY ORGANIZATION



Problems Identification



WASTE & TRASH

Huge Volume of
Community Trash
Waste Management 3R
(Reuse, Reduce, Recycle)



WATER POLLUTION

Waste
Communal/Industries
directly to the channels
and river, sedimentation



WATER RESOURCE

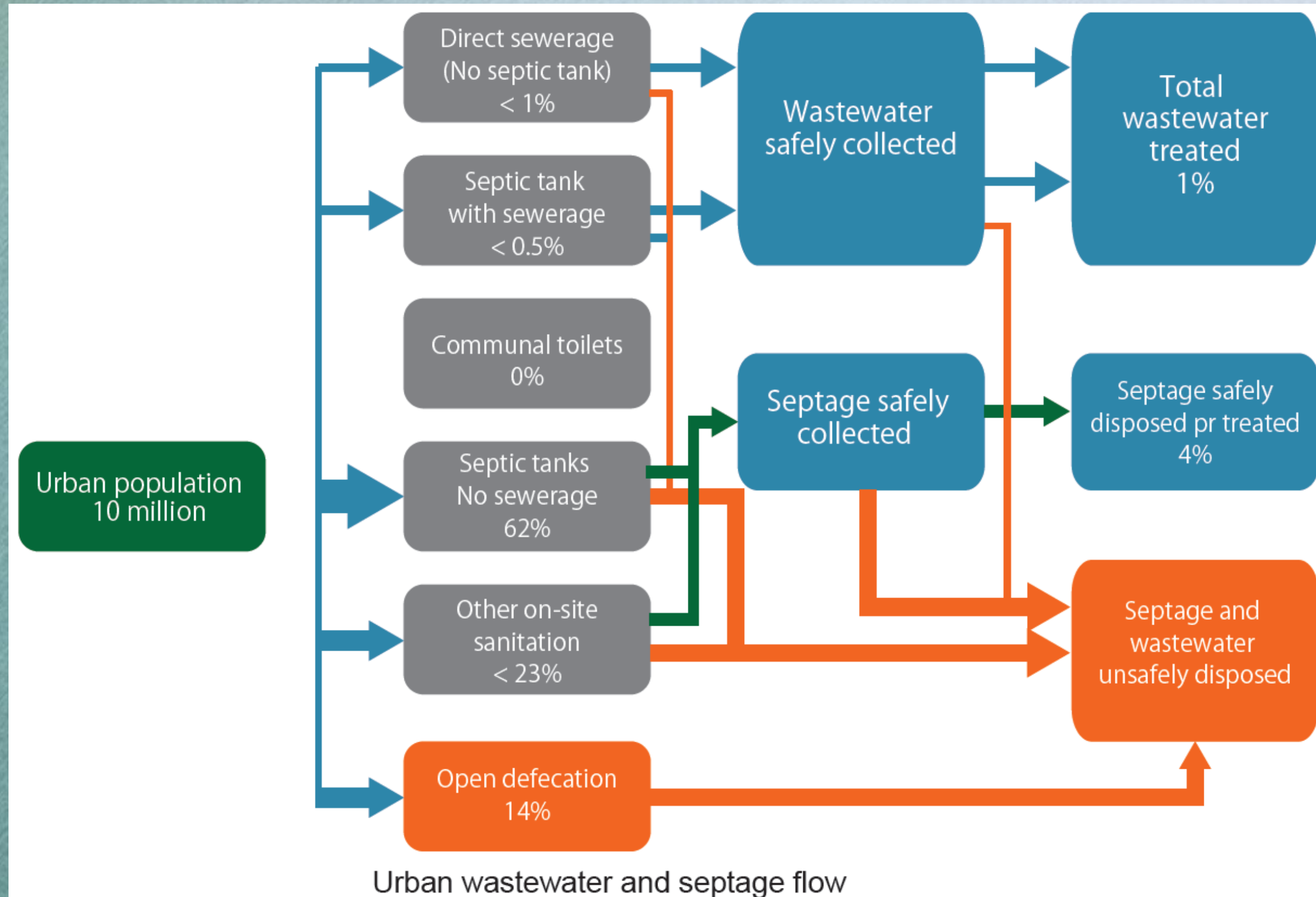
Water Ground
Exploitation, Land
Subsidence



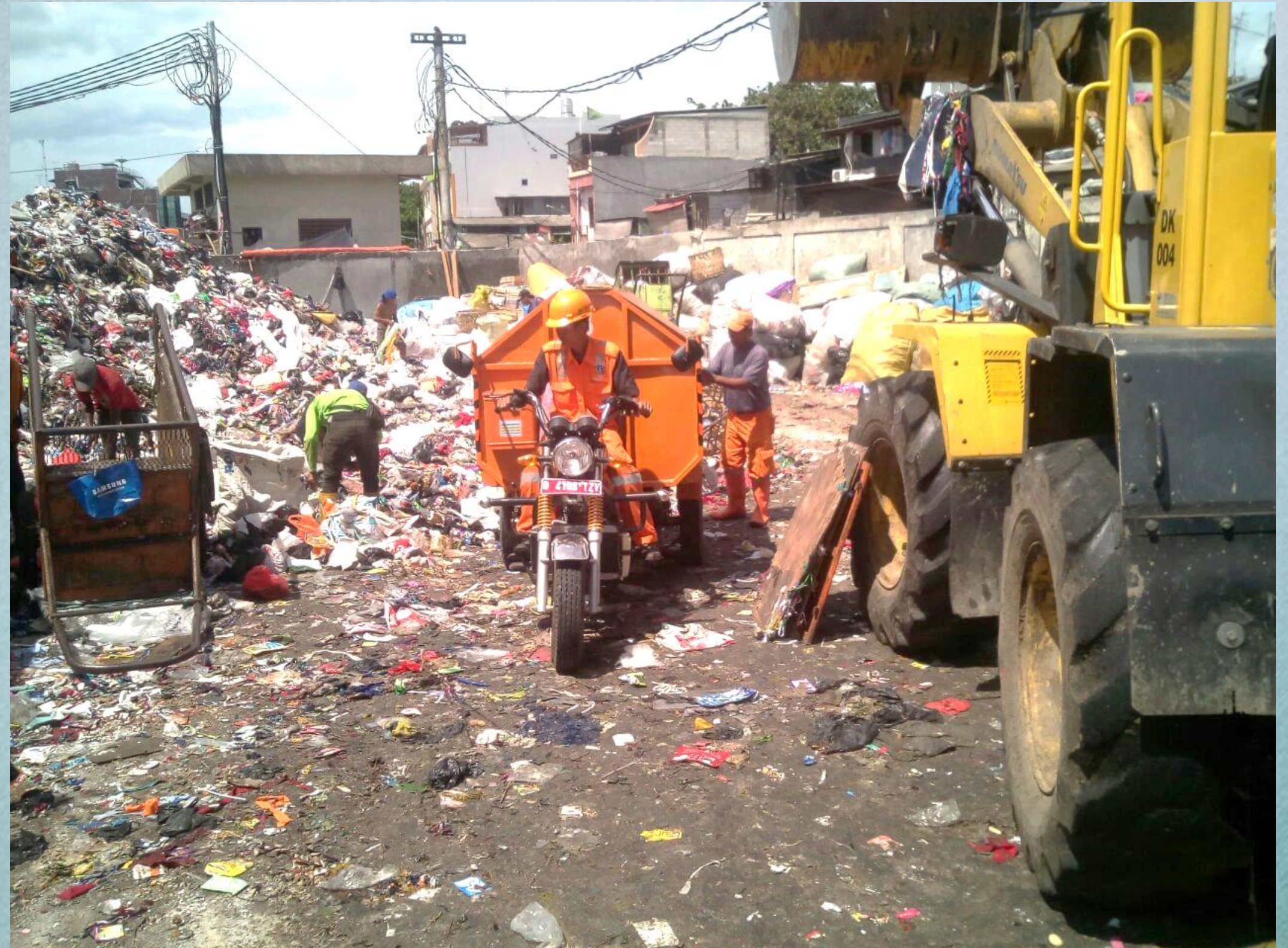
FUND AND INFRASTRUCTURE

Investment to built
Integrated Waste Water
Management System in
Jakarta (Jakarta
Sewerage System/JSS)

Problems Identification



WASTE & TRASH



WATER POLLUTION



WATER RESOURCE

JAKARTA SOURCE OF RAW WATER



Jatiluhur
Reservoir



Treated
Water
Tangerang
City



Jakarta
River

Jakarta Clean Water Need



▪ Demand :
26.100 l/s
10 million population

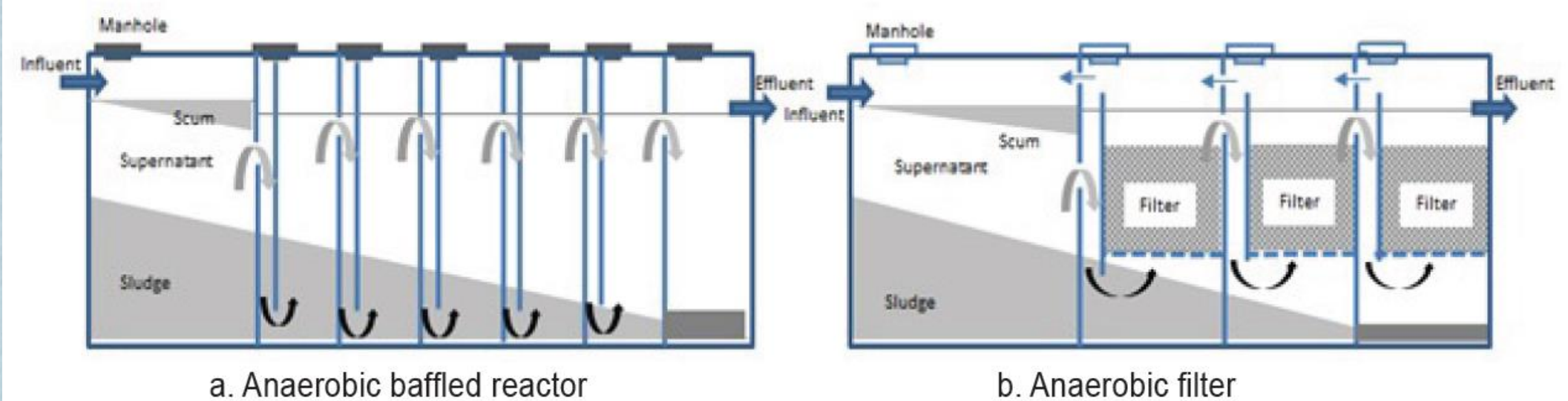
▪ Supply :
17.000 l/s

▪ Water Deficits :
9.000 l/s

Sumber: PDAM/Grt

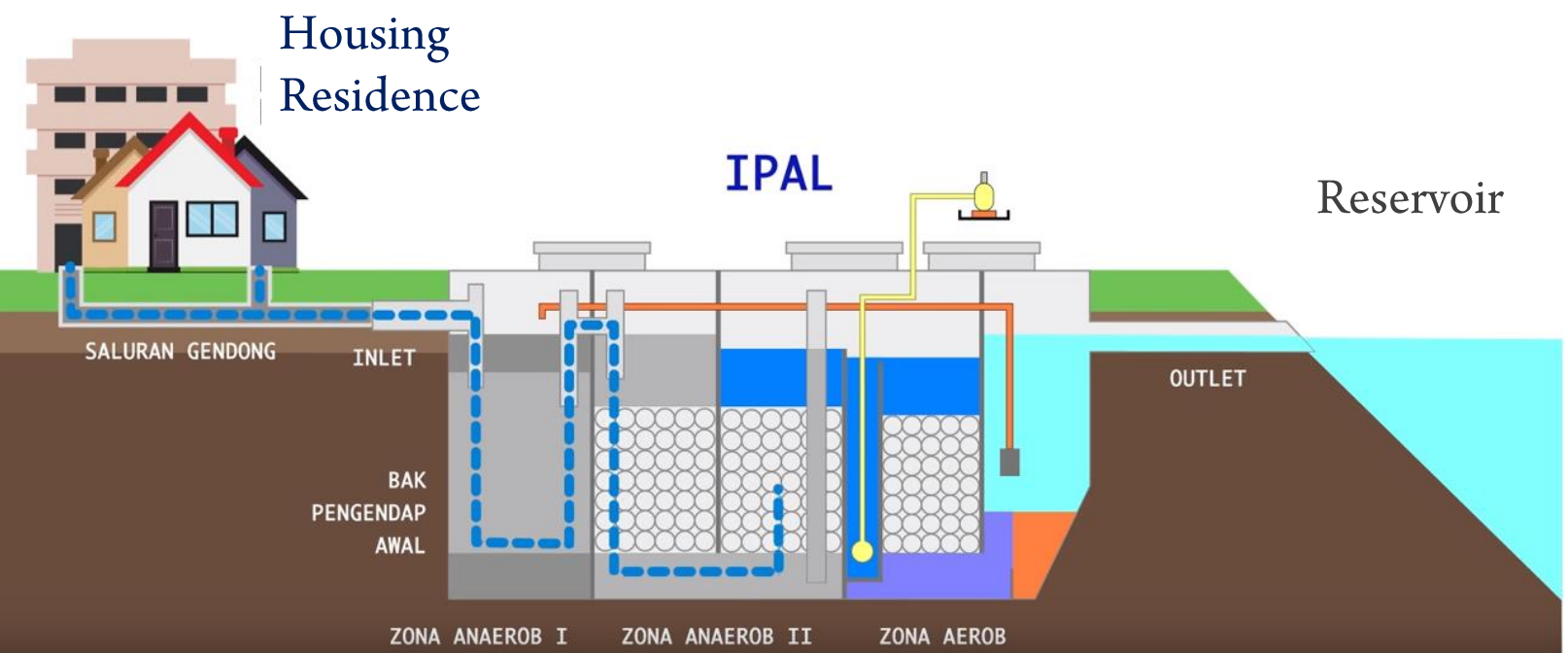
CITY PROJECT (LOCAL GOVERNMENT)

Communal Waste Water Treatment



Treatment facilities
Source: Sudjimah, 2013

Waste Water Treatment Process



Waste Water Treatment with Moving Bed Biofilm Reactor (MBBR) Technology Melati Reservoir

CLIMATE VILLAGE PROGRAM & WASTE MANAGEMENT PROGRAM

Climate Village Program Activities in Urban Area:



Waste Management (Bank Sampah)



KEY ISSUES PROJECT

At national level

- Low political will and prioritisation to improve sanitation at all government levels, as evidenced from limited budget allocation of both local and central government. Funding allocation for sanitation projects or programmes is only 1–2% of district budget.
- Many existing policies and regulations are outdated ; enforcement of relevant policies and regulations is weak, especially for environmental sanitation.
- Lack of coordination among related agencies responsible for sanitation facilities and infrastructure development. Lack of penalties.
- Limited funding resources and investments.
- Limitations of human resource capacity and lack of qualified personnel.
- Limited availability of Master plans for sanitation developments.

At provincial level

- Most of strategies for the sector are created at the national level. Thus, translating these strategies to the provincial and local levels is very challenging.
- No clear institutional arrangements for wastewater and septage management at local government level.
- Weak capacity and lack of incentives to implement and manage sanitation activities.
- Lack of progress monitoring.

At city level

- Lack of effective approach for inter-agency collaboration with the full range of sanitation stakeholders on planning and service delivery.
- Limited capacity for planning, infrastructure development, service delivery and sanitation promotion.
- Lack of appropriate mechanisms for accessing and allocating capital funds.
- Lack of mechanisms to promote private sector involvement in service delivery (e.g., in safe removal, treatment and disposal of septic tank sludge).
- Poor operation and maintenance of existing infrastructure.

At community and household level

- Low community awareness, participation and demand for improved sanitation services; ignorance of impact of defecation in rivers or wells on others' health due to ingrained lifestyles at community level.

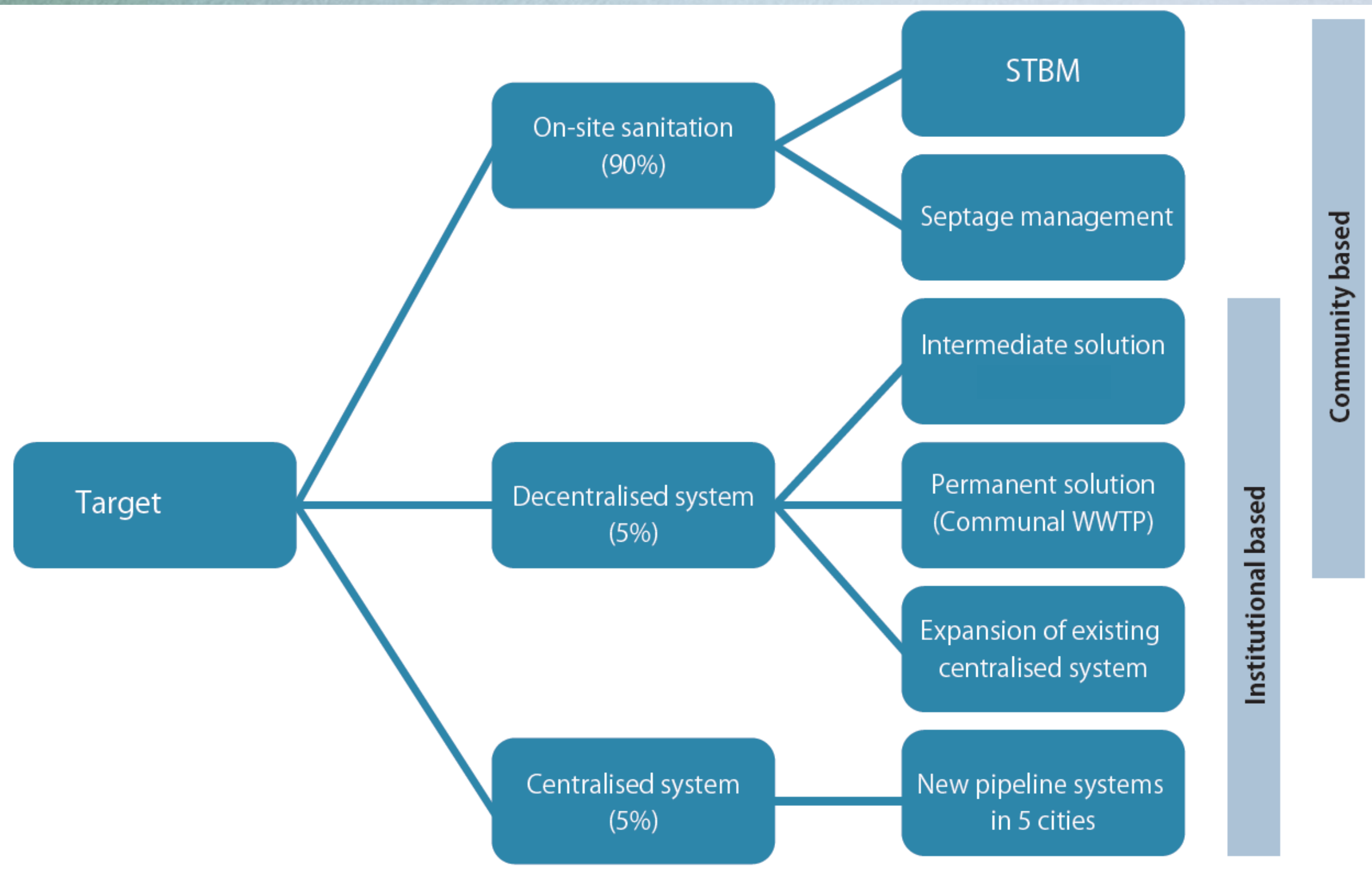
PROJECT FINANCING ALLOCATION

TABLE 1.3: Projected Financing Allocations for Sanitation (2010-2014)

Source of Financing	Projected/Actual financing for PPSP (IDR billions)					
	2010	2011	2012	2013	2014	Total
Projected financing requirements (PPSP Roadmap)	4,247	7,146	10,657	23,297	17,277	62,625
Financing sources:						
National budget (APBN, DAK)	1,883	3,795	4,022	4,302	4,766	18,768
Provincial budgets (APBD-P)	357	407	766	909	997	3,436
Municipal/District budgets (APBD-KK)	2,816	3,703	4,540	5,944	7,795	24,798
Donors (based on current commitments)	1,096	2,097	1,224	1,633	1,454	7,503
Communities and Private Sector (CSR)	18	55	105	234	171	583
Total projected allocations:	6,170	10,058	10,656	13,021	15,184	55,088
Surplus/Deficit:	1,922	2,912	-2	-10,276	-2,093	-7,537
Surplus/Deficit (%):	45%	41%	0%	-44%	-12%	-12%

Source: USDP

Target for Domestic Wastewater and Septage Management



THANK YOU

Radityo Heru Prabowo
Jakarta Provincial Government
Tambora District
+62 8111752444 / radityo@jakarta.go.id