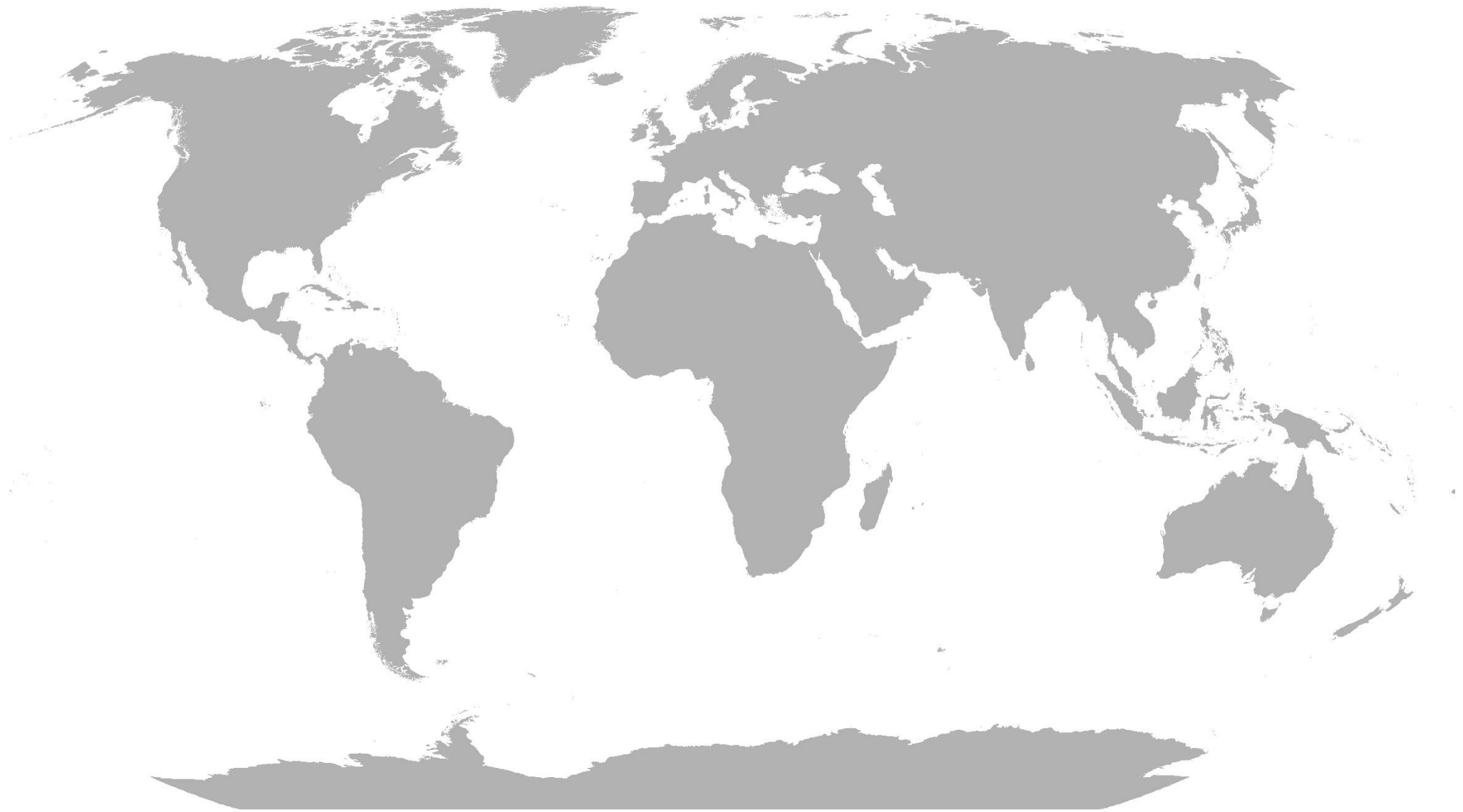


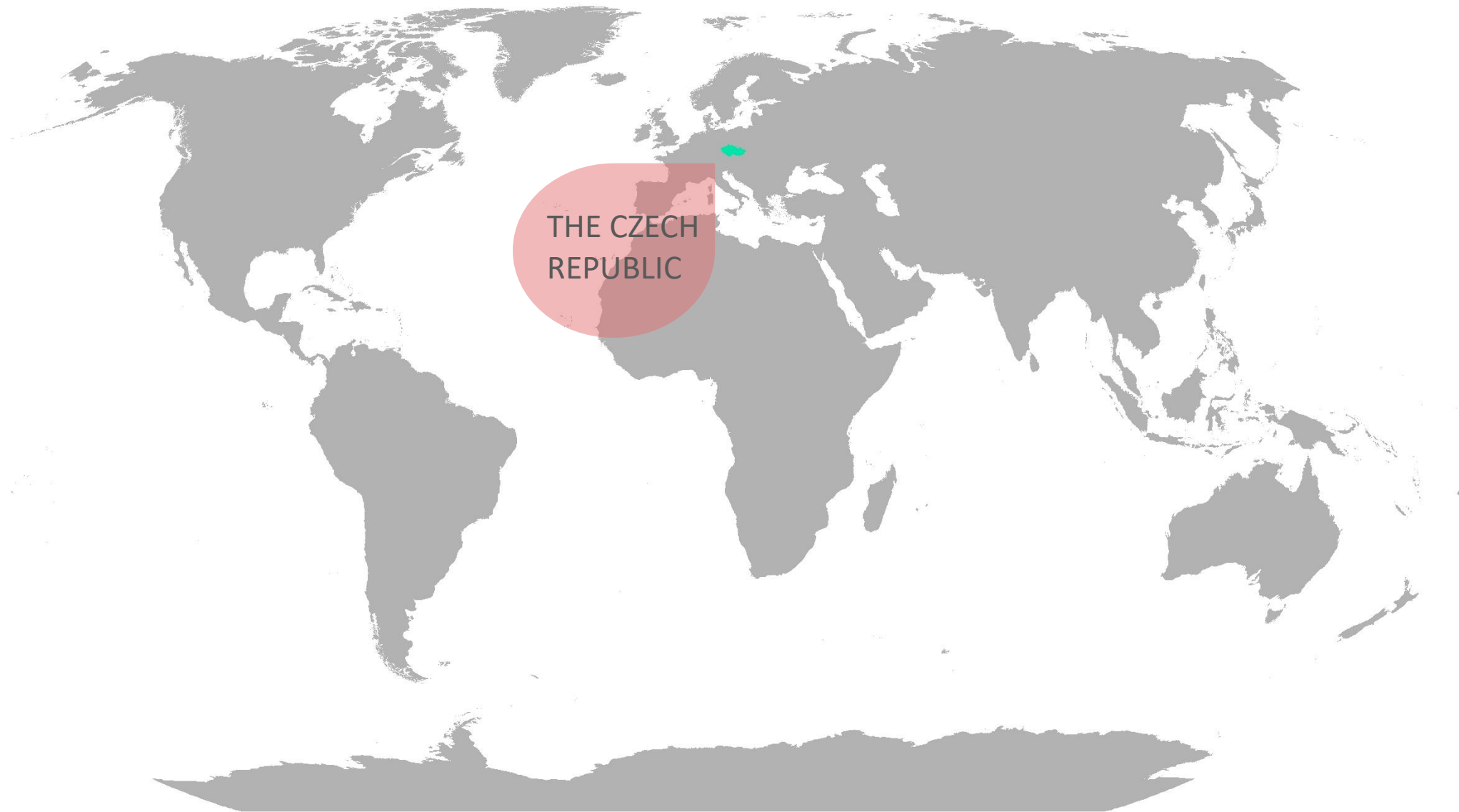
PRAGUE, **LET'S** **REGENERATE.**

urban regeneration & climate change program seoul

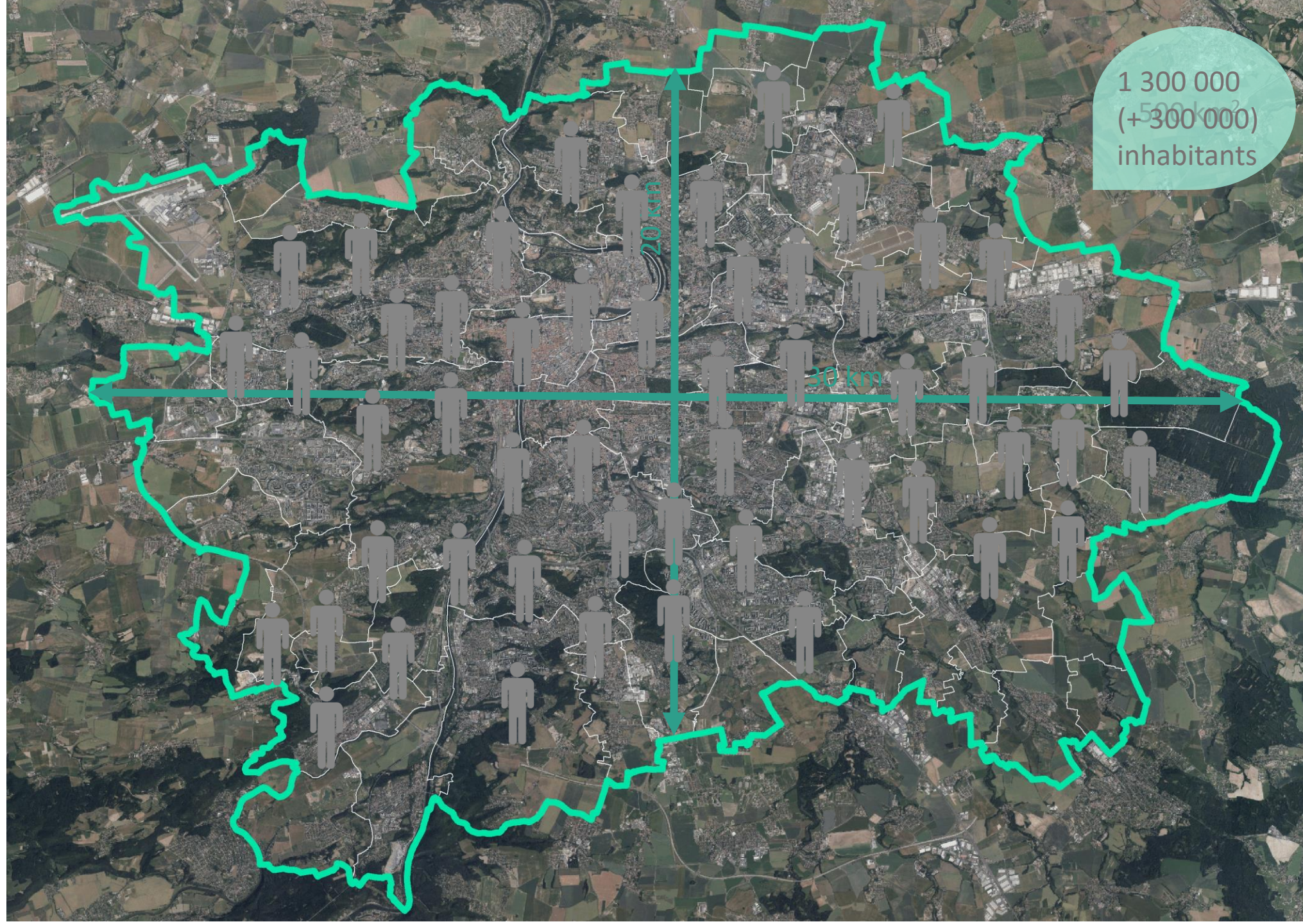
ANNA KURYVIÁLOVÁ
SPATIAL DEVELOPMENT DEPARTMENT
CITY HALL OF PRAGUE













CITY HALL OF PRAGUE

PRA HA
PRA GUE
PRA GA
PRA G

SPATIAL DEVELOPMENT
DEPARTMENT

securing the process
of procuring of planning
documents

IPR ———
PRaHa

PRAGUE INSTITUT OF
PLANNING AND DEVELOPMENT

the architects





SPATIAL DEVELOPMENT POLICY

BINDING PLANNING DOCUMENTATION

DEVELOPMENT PRINCIPLES

SPATIAL/URBAN PLAN

REGULATORY PLAN

NON-STATUTORY PLANNING MATERIALS

PLANNING STUDY

PLANNING ANALYTICAL MATERIALS





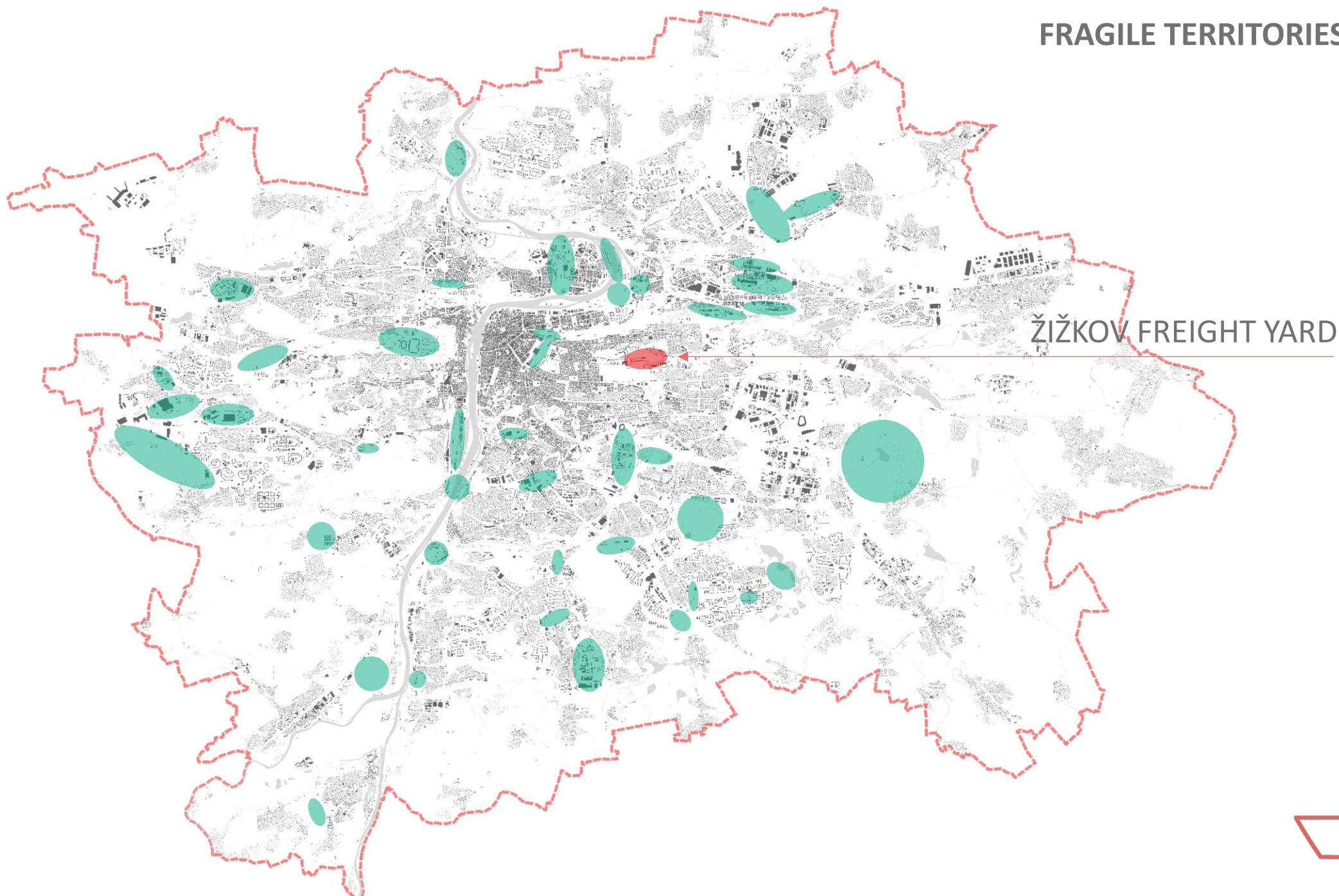
PLANNING ANALYTICAL MATERIALS

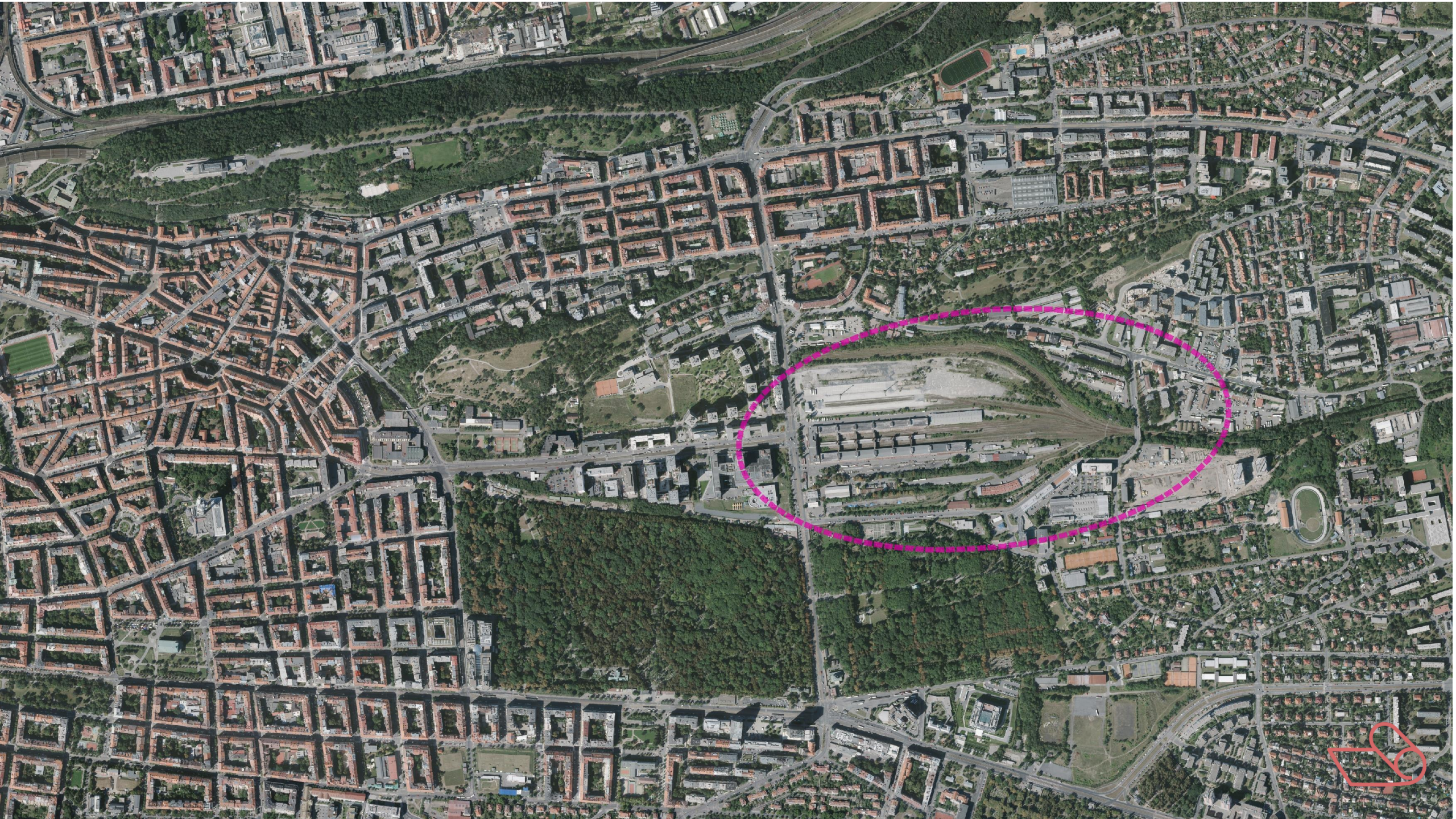
THE PROBLEMS TO BE SOLVED IN THE PLANNING DOCUMENTATION.

AREA FOR REGENERATION DEFINED AS FRAGILE TERRITORY.



FRAGILE TERRITORIES







KEY ISSUES

NO CITY VISION ABOUT THE AREA (BUILDING BAN).

LAND OWNERSHIP FRAGMENTATION.

MANY STAKEHOLDERS.

LONG TERM PROBLEM.

INVESTORS WANT TO HARVEST THE AREA.



LAND OWNERSHIP

CENTRAL
GROUP

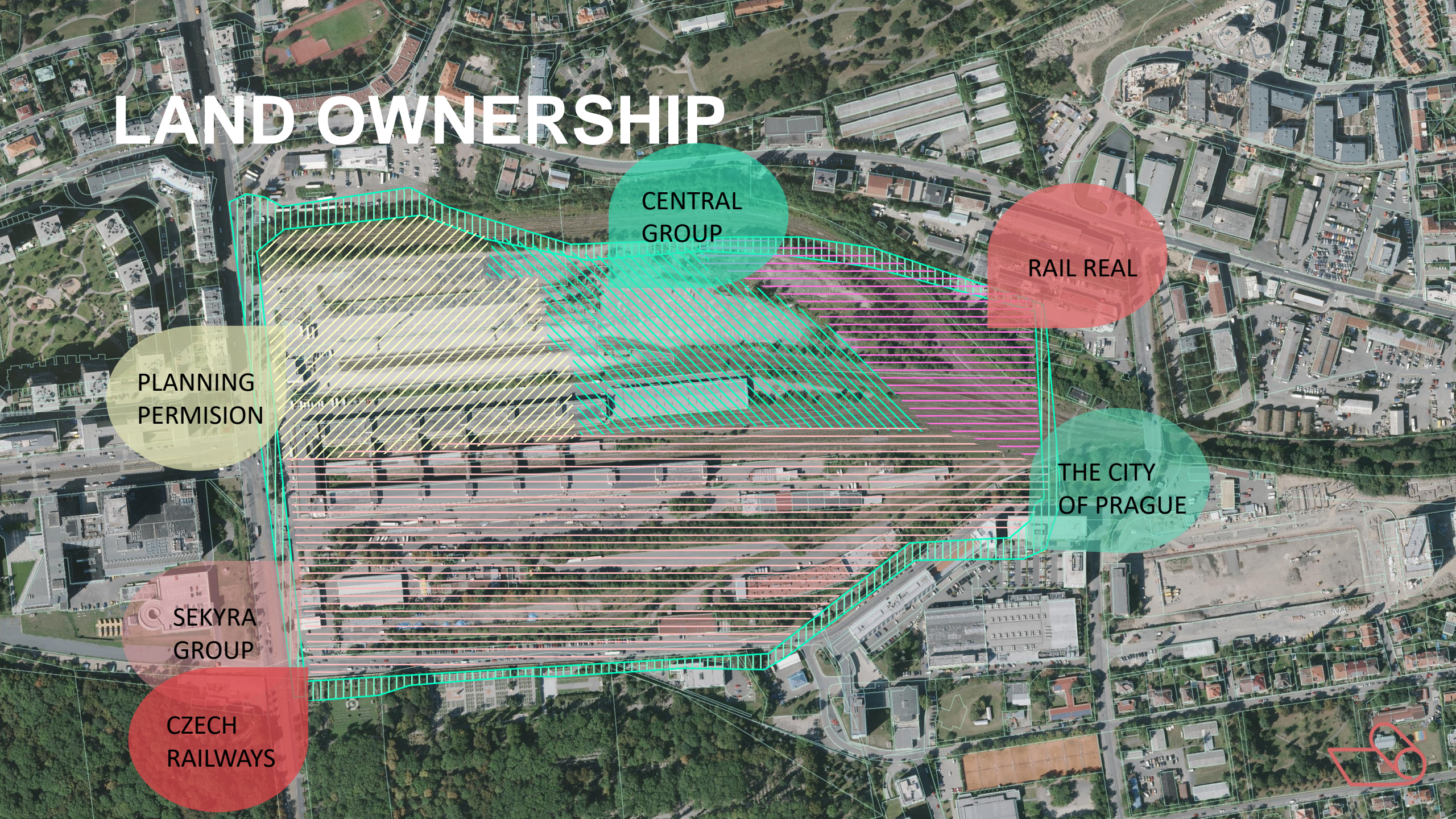
RAIL REAL

PLANNING
PERMISION

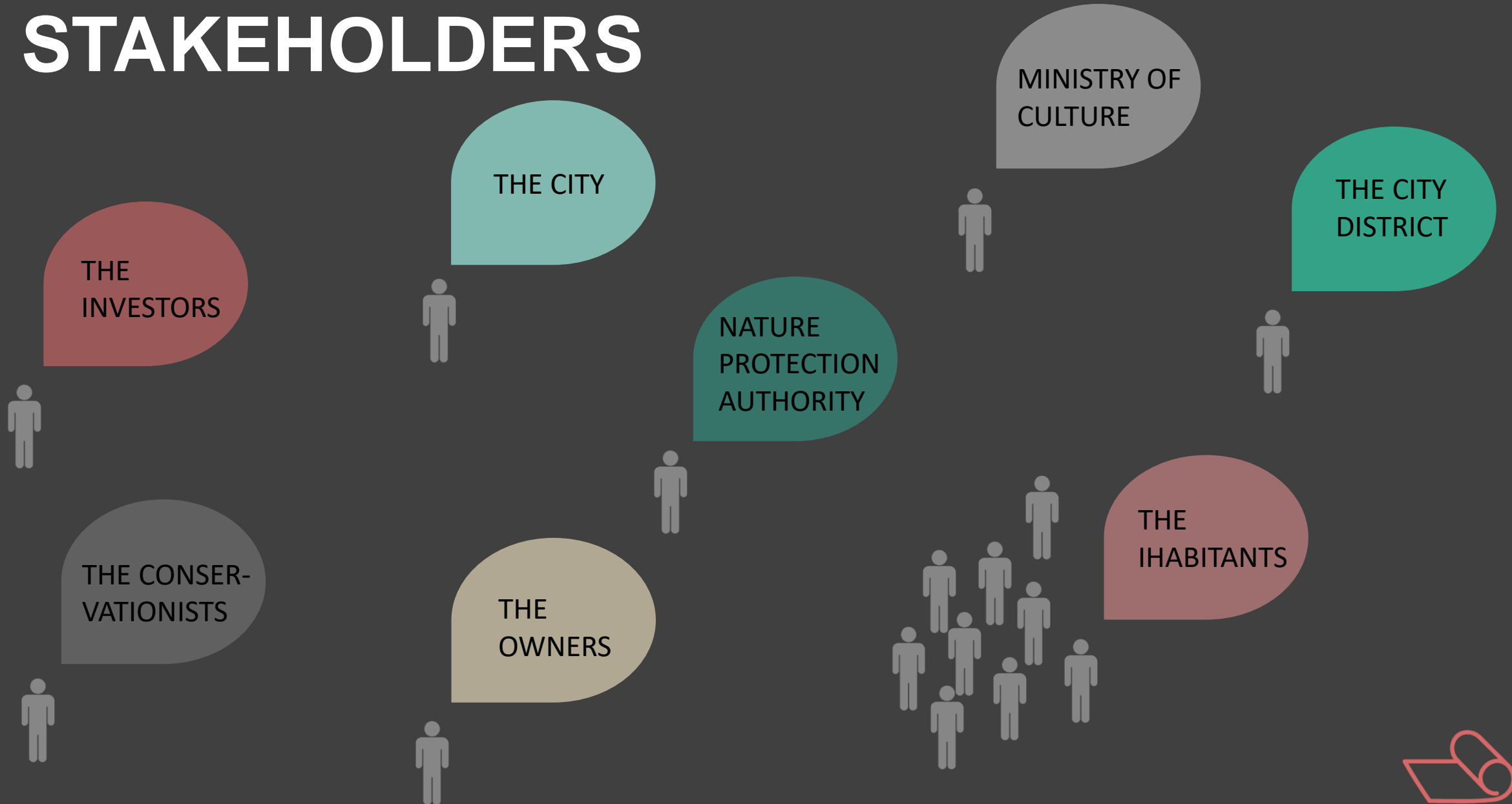
THE CITY
OF PRAGUE

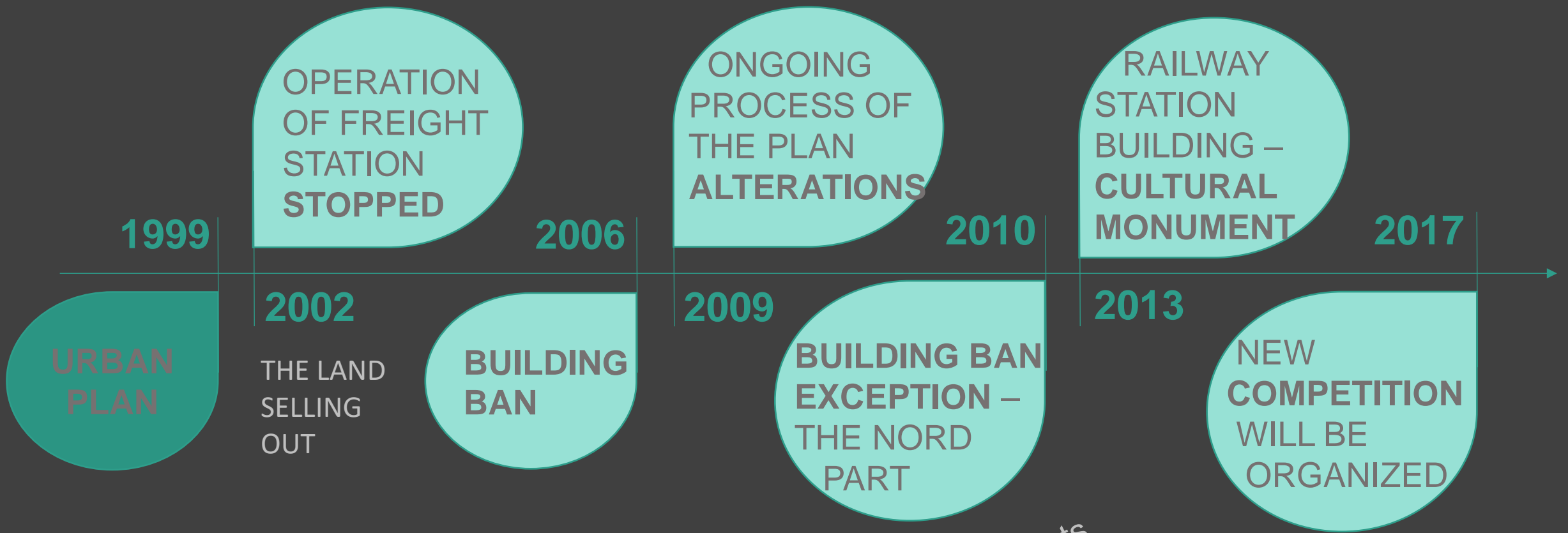
SEKYRA
GROUP

CZECH
RAILWAYS



STAKEHOLDERS





students' projects

public initiatives

independent projects

urban studies





LEARNING FROM THE PROCESS

HAVING CLEAR VISION FROM THE BEGINNING.

DO NOT SELL THE CITY'S (PUBLIC) KEY PROPERTY.

INCLUDE PARTICIPATION FROM THE BEGINNING.

It is never too late.

WHEN THE CITY DOES NOT KNOW, THERE IS TIME FOR BOTTOM-UP ACTION.



SO, THAT'S HOW PRAGUE REGENERATES.

URBAN REGENERATION & CLIMATE CHANGE PROGRAM SEOUL

ANNA KURYVIÁLOVÁ anna.kuryvialova@praha.eu
spatial development department
city hall of prague