



# Chapu Water Governance Project of Putuo District, Shanghai

Dong Rui  
2018.06

chief of planning section, Shanghai Putuo environmental protection bureau

# 01 Water Pollution Prevention Background in Recent Years of China



## Country

In 2015, the State Council issued *Action Plan for Water Pollution Control*; in 2016, River System is conducted.



## Suzhou River

At present, the important fourth project of water Suzhou River-Comprehensive Control will be conducted, planning that the water quality in 2020 will reach the V standard of the surface water.



## Shanghai

Until 2020, the water quality of the whole city will be effectively improved, basically eliminating the water body section which loses the using function (worse than V class)



## Putuo District

Start the whole-covered “One River, One Strategy”. Through the effort of two years, among the 55 rivers, there are 30 rivers of the qualified rivers increased from eight rivers.

## 02 Riverway Overview

### Zhongchapu

**Riverway overview:** The total length is 5.92km, among which the length in Putuo District is 2.96km and the rest ones are all in Jiading District.

**Water quality overview :** The water quality standard in 2015 is bad V class, and the average annual ammonia-nitrogen concentration is 5.11mg/L.

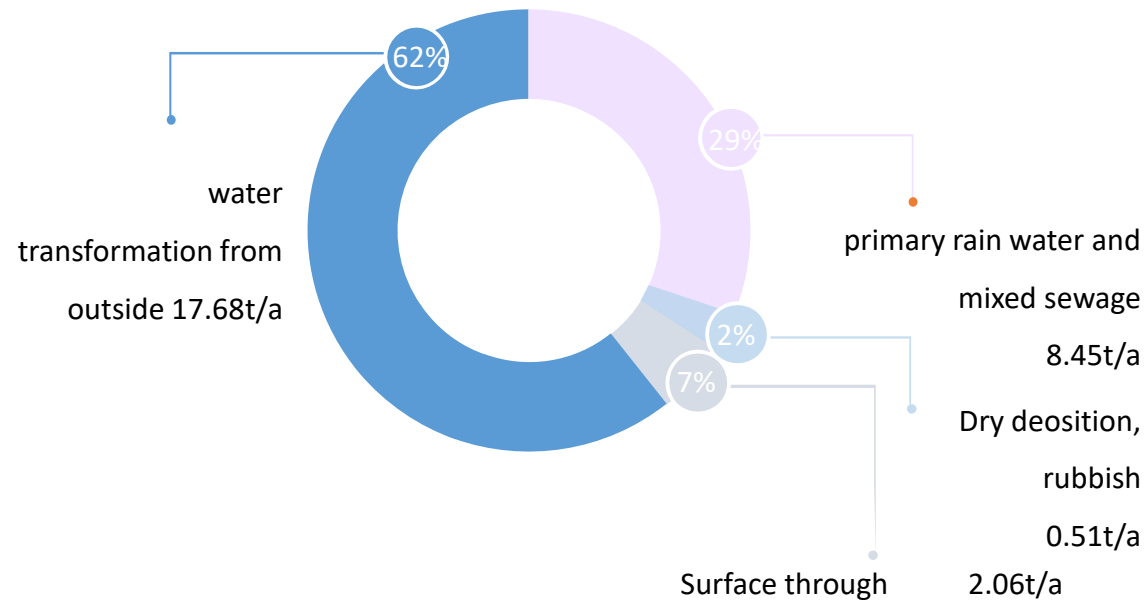


### Xinchapu

**Riverway overview :** The whole length is 9.5km, running through Baoshan, Jiading and Putuo, among which the length in Putuo District is 3.84km.

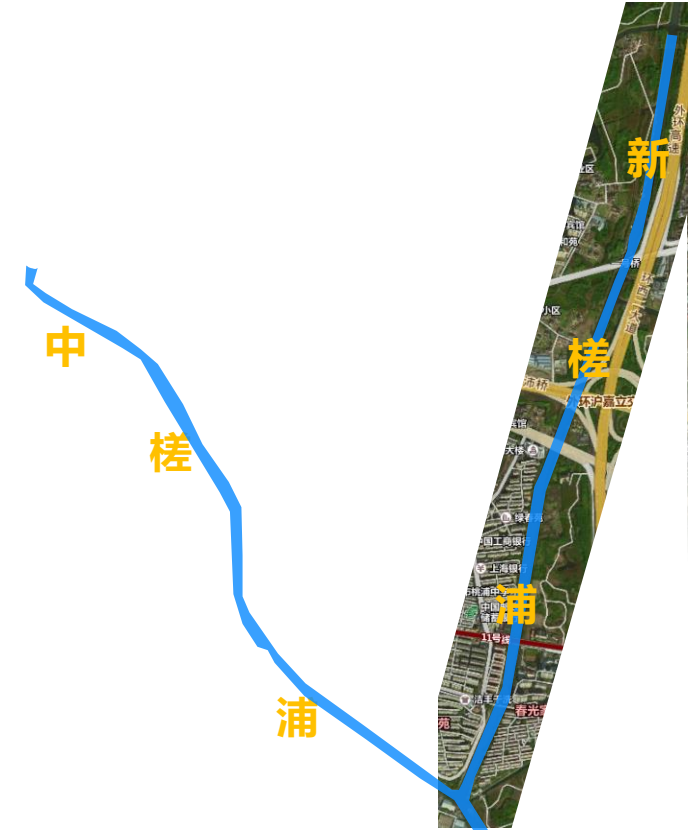
**Water quality overview:** The water quality standard in 2015 is bad V class, and the average annual ammonia-nitrogen concentration is 5.55mg/L.

The two Chapu rivers are branches of the main river --Suzhou River, which is one of the longest and the most important rivers at Shanghai.



## Contribution rate analysis of pollution origin to water in Zhongchapu

items	river system in Zhongchapu	
	ammonia-nitrogen	ratio
water transfer diversion	17.68t/a	62%
surface through	2.06t/a	7%
primary rain water and mixed sewage	8.45	29%
dry deposition	0.0035t/a	0.01%
rubbish	0.51t/a	1.99%



## Contribution rate analysis of pollution origin to water in Xinchapu

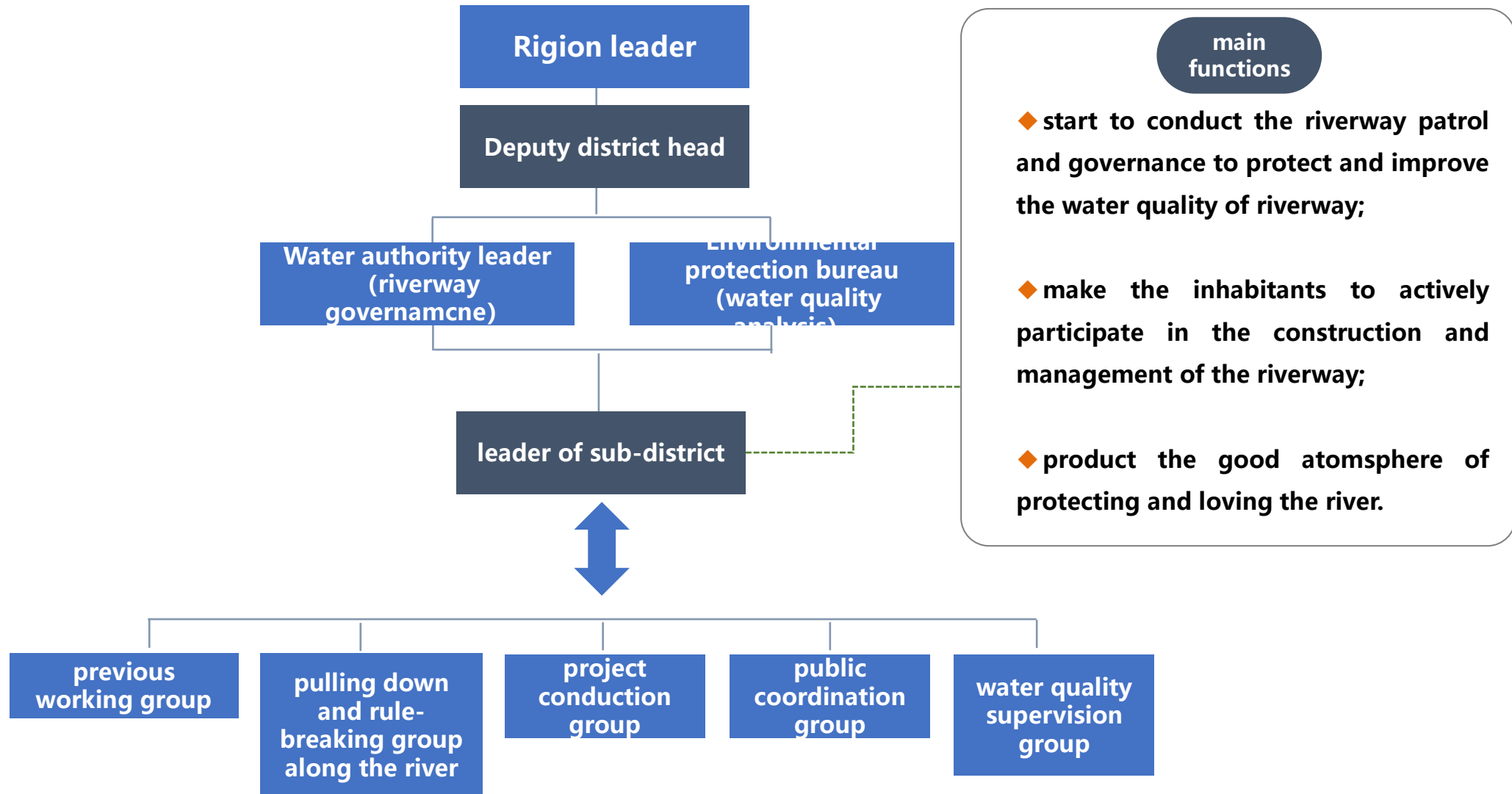
**Xinchapu (Putuo District)** There are mainly the residential areas and public greenlands among the district, and the pollution resource to the river is from the upland water.



### 03 Treatment mechanism



## River Institute Construction



## 04 Measurement of riverway governance



stop the sewage pipe stop 17 sewage discharge outlet



pull down the illegal along the river

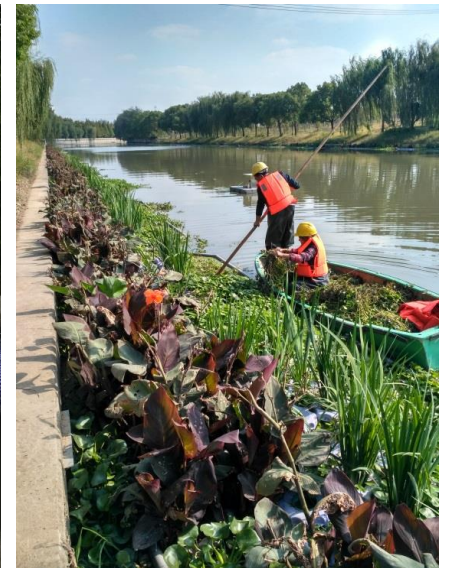
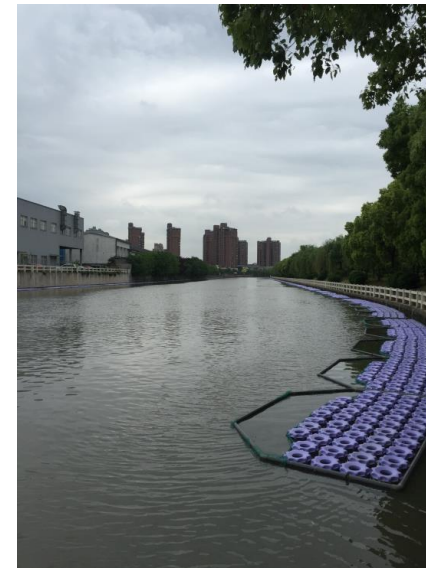
pull down the illegal construction within 6 meters  
along the river



sludge cleaning and canal dredge



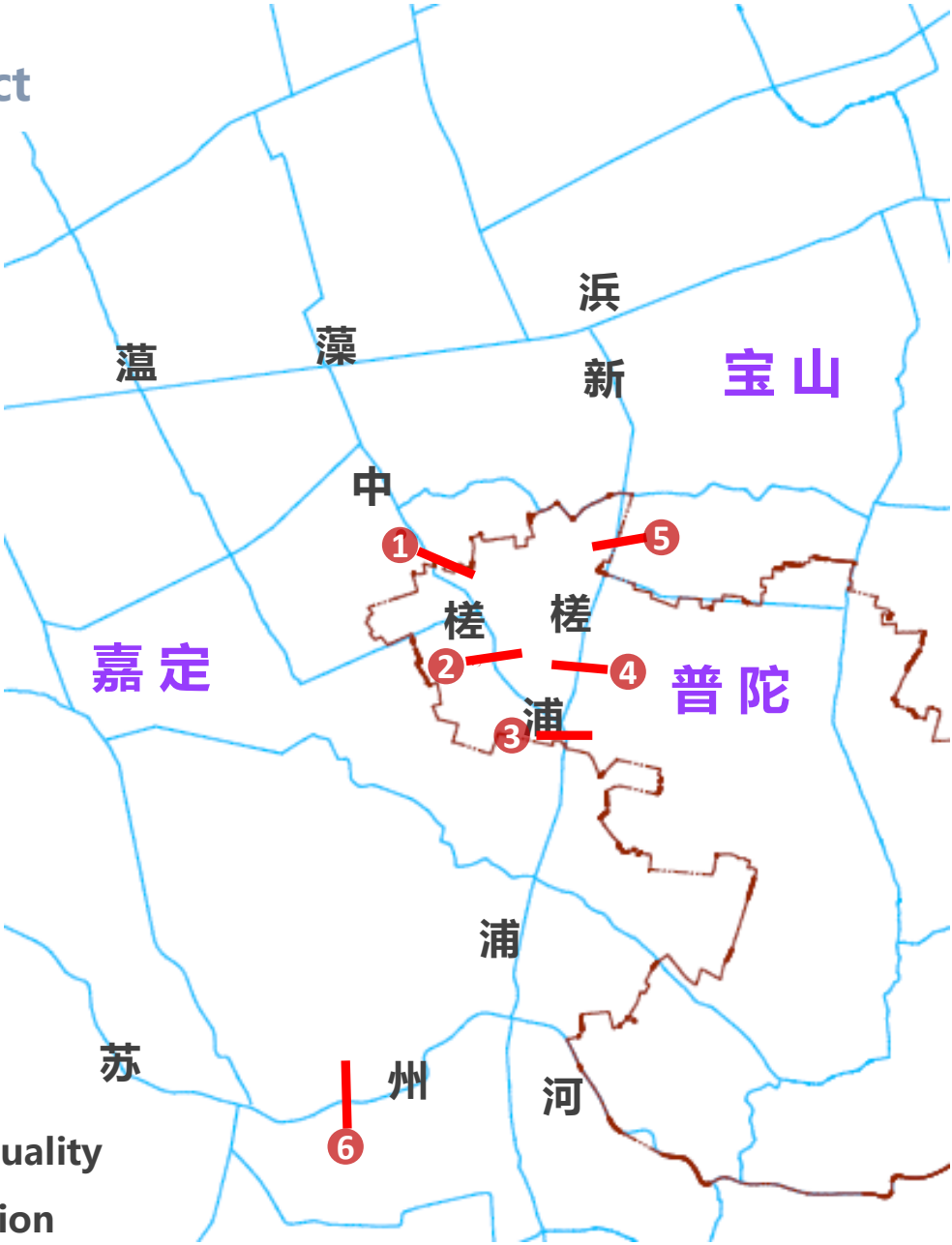
ecological  
rebuidling



05 water qualtiy index analysis after the project

water quality supervision chart after project

river name	supervision location	sample time	oxygen dissoluti on	ammonia-nitrogen	total phosphorus (P)	transpare ncy degree
			mg/L	mg/L	mg/L	cm
Zhongcha pu	1 Zhennan Road	2017/12	5.03	1.90	0.33	15
	2 Baili Bridge	2017/12	4.92	2.65	0.48	16
Xinchapu	3 Jinchang Road	2017/12	2.11	2.94	0.173	24.3
	4 Wuwei Road	2017/12	2.16	3.23	0.189	9
	5 Nanda Road	2017/12	1.03	0.765	0.11	30
Suzhou River	6 Huacao	2017/12	4.3	1.43	0.18	—



the improving rate of the ammonia nitrogen index has passed 50%

1 — water quality supervision section



## 06 governance effects of water environment



Zhongchapu



Xinchapu



## 07 working thought

### city plan

Accelerate the governance of the upland Suzhou River, and conduct the pollution stopping rebuilding and primary rain water governance measures of the pump station along the riverway.

### region co-activity

Based on completing the polluted water governance, Jiading District continues to enforce the pollution controlling and water ecological reguilding, to stop the deterioration of the water quality in Suzhou River.

### inside enforcement

Improve the governance measures of the fourth Su project; enforce the management and controlling through the river mechanism, explore the pollution prevention and ecological enforcement governance technology, and tries to reach the standard of water quality in Chapu river in 2020.